

For Research Use Only.  
Not For Use In Diagnostics.

# Multi-rAb CoraLite® Plus 647-Goat Anti-Mouse Recombinant Secondary Antibody (H+L)



Catalog Number:RGAM005

## Information

Catalog Number: RGAM005	Reactivity: Mouse	Clonality: Multiclonal recombinant
Host: Goat	Physical State: Liquid	
Applications: IF, FC	Conjugation: CoraLite® Plus 647	

## Recommended Dilutions

1:200-1:1000 for IF and FC

## Fluorophore

CoraLite® Plus 647, Amax=654 nm, Emax=674 nm

## Safety Notes

This product is for research use only, not for diagnostic or therapeutic use.

## Storage

**Storage:**  
Store at -20°C. Stable for one year after shipment.  
**Storage Buffer:**  
PBS with 50% glycerol, 10 mg/mL BSA, 0.1% Proclin-300, pH 7.4.  
Aliquoting is unnecessary for -20°C storage

## Purity

The antibody was purified from culture media supernatant by immunoaffinity chromatography using Protein G beads.

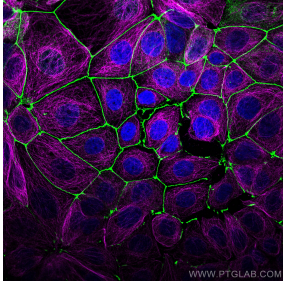
For technical support and original validation data for this product please contact:

T: 1 (888) 4PTGLAB  
(1-888-478-4522)  
(toll free in USA),  
or 1(312) 455-8498  
(outside USA)

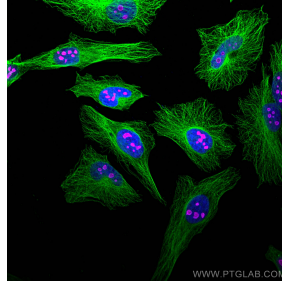
E : proteintech@ptglab.com  
W: ptglab.com

**This product is exclusively available under Proteintech Group brand and is not available to purchase from any other manufacturer.**

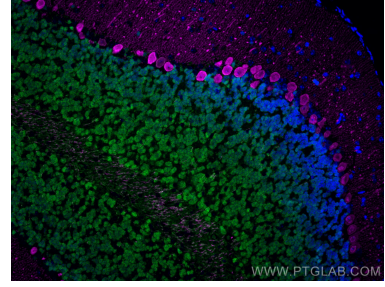
## Selected Validation Data



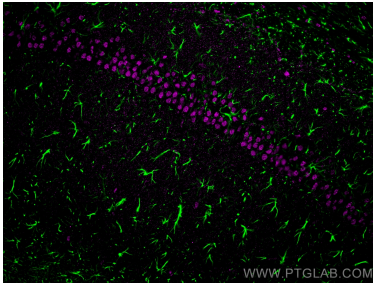
Immunofluorescence of MCF-7 cells: MCF-7 cells were fixed with 4% PFA and stained with Rabbit anti-ZO 1 polyclonal antibody (21773-1-AP, 1:2000, green) and mouse anti-Alpha Tubulin monoclonal antibody (66031-1-Ig, 1:1000, magenta). Multi-rAb CoraLite® Plus 488-Goat Anti-Rabbit Recombinant Secondary Antibody (H+L) (RGAR002, 1:500) and Multi-rAb CoraLite® Plus 647-Goat Anti-Mouse Recombinant Secondary Antibody (H+L) (RGAM005, 1:500) were used for detection.



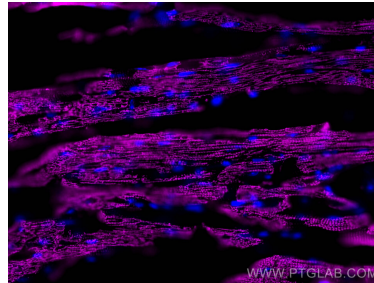
Immunofluorescence of HeLa cells: HeLa cells were fixed with 4% PFA and stained with Rabbit anti-Alpha Tubulin polyclonal antibody (11224-1-AP, 1:200, green) and mouse anti-NPM1 monoclonal antibody (60096-1-Ig, 1:1000, magenta). Multi-rAb CoraLite® Plus 488-Goat Anti-Rabbit Recombinant Secondary Antibody (H+L) (RGAR002, 1:500) and Multi-rAb CoraLite® Plus 647-Goat Anti-Mouse Recombinant Secondary Antibody (H+L) (RGAM005, 1:500) were used for detection.



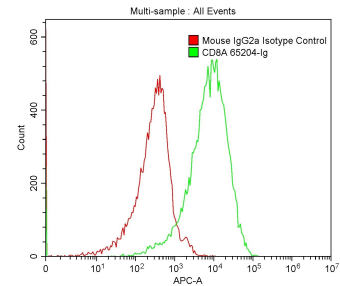
Immunofluorescence of mouse cerebellum: mouse cerebellum FFPE section was stained with Rabbit anti-NeuN polyclonal antibody (26975-1-AP, 1:200, green) and mouse anti-Calbindin-D28k monoclonal antibody (66394-1-Ig, 1:200, magenta). Multi-rAb CoraLite® Plus 488 conjugated Recombinant Goat anti-rabbit secondary antibody (RGAR002, 1:500) and Multi-rAb CoraLite® Plus 647 conjugated Goat Anti-Mouse Recombinant Secondary Antibody (H+L) (RGAM005, 1:500) were used for detection (RGAM005, 1:500) .



Immunofluorescence of rat brain: rat brain FFPE section was stained with Rabbit anti-GFAP polyclonal antibody (16825-1-AP, 1:200, green) and mouse anti-NeuN monoclonal antibody (66836-1-Ig, magenta). Multi-rAb CoraLite® Plus 488 conjugated Recombinant Goat anti-rabbit secondary antibody (RGAR002, 1:500) and Multi-rAb CoraLite® Plus 647 conjugated Goat Anti-Mouse Recombinant Secondary Antibody (H+L) were used for detection (RGAM005, 1:500) .



Immunofluorescent analysis of (4% PFA) fixed OCT-embedded frozen mouse heart tissue using ACTC1-specific antibody (66125-1-Ig, Clone: 1F2B9 ) at dilution of 1:800 and Multi-rAb CoraLite® Plus 647-Goat Anti-Mouse Recombinant Secondary Antibody (H+L) (RGAM005).



1X10<sup>6</sup> MOLT4 were surface stained with 0.2 ug Anti-Human CD8 (65204-1-Ig, Clone: UCHT4) and Mouse IgG2a Isotype Control 66360-2-Ig. Multi-rAb CoraLite® Plus 647-Goat Anti-Mouse Recombinant Secondary Antibody (H+L) RGAM005 was used at 1:500 for detection.