

Proteintech's Solution for Cell Separations – Magnetic Beads & Magnetic Beads Kits



The characterization of specific cell types and their use in various downstream applications requires that cells of interest can be isolated from a heterogeneous cell population such as PBMC or whole blood.

Simply incubate your heterogeneous cell suspension with Proteintech's magnetic cell separation beads to discover quick, easy, column-free cell depletions and isolations, resulting in a high purity homogeneous cell population of interest!

Discover Magnetic Cell Separation Products

- Proteintech's antibody quality and in-house validation you know and trust.
- Routinely tested in peripheral blood mononuclear cells and whole blood.
- User-friendly, fast and easy to use compared to cell separation by fluorescence activated cell sorting (FACS).
- Tested with multiple magnets; you can use the magnet you already have!

Magnetic Beads Product List

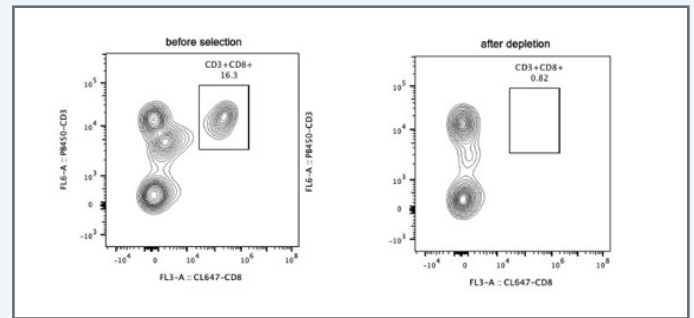
Product Name	Cat. No	Size
Streptavidin Magnetic Beads	MS001	0.1mL or 1mL
Human CD3 Magnetic Beads	MS002	10 or 100 Tests
Human CD4 Magnetic Beads	MS003	10 or 100 Tests
Human CD8 Magnetic Beads	MS004	10 or 100 Tests
Human CD19 Magnetic Beads	MS005	10 or 100 Tests

Magnetic Beads Kit Product List

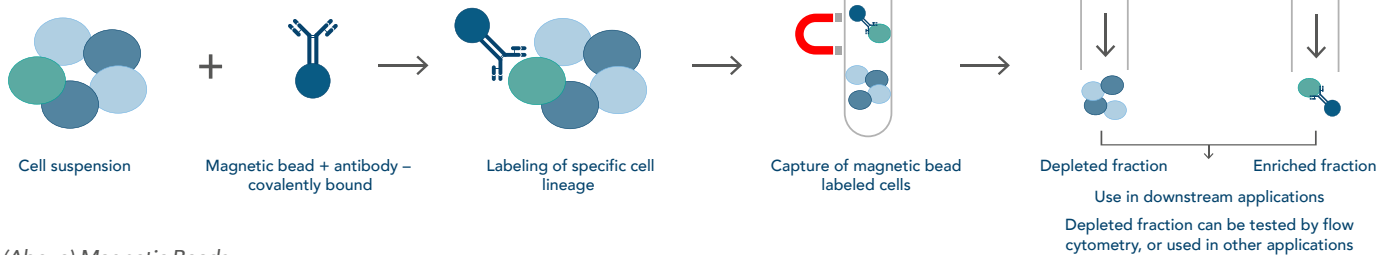
Product Name	Cat. No	Size	Components
Human CD3 Magnetic Beads Kit	KMS001	10 or 100 Tests	Streptavidin Magnetic Beads Human CD3 Biotin Antibody
Human CD4 Magnetic Beads Kit	KMS002	10 or 100 Tests	Streptavidin Magnetic Beads Human CD4 Biotin Antibody
Human CD8 Magnetic Beads Kit	KMS003	10 or 100 Tests	Streptavidin Magnetic Beads Human CD8 Biotin Antibody
Human CD19 Magnetic Beads Kit	KMS004	10 or 100 Tests	Streptavidin Magnetic Beads Human CD19 Biotin Antibody

Example of High Purity Cell Depletions

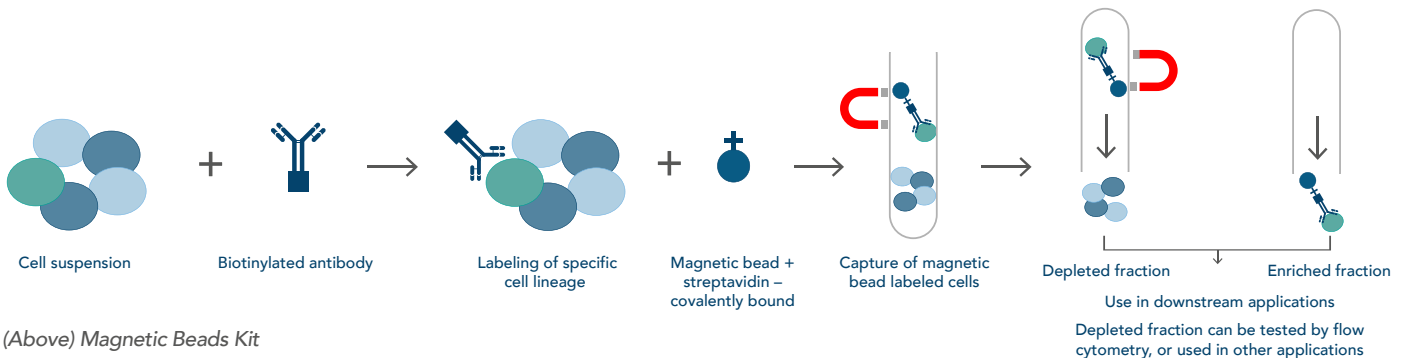
Following depletion of CD8+ cells, supernatant cell suspension was stained with PB450-CD3 (clone: HIT3a) and CL647-CD8(clone: OKT8) antibodies. CD45 positive cells are gated in the analysis. Left panel: CD3+CD8+ cells before selection. Right panel: CD3+CD8+ cells after depletion. Human CD8 magnetic beads are tested using PBMC from three different donors.



How the Products Work



(Above) Magnetic Beads



(Above) Magnetic Beads Kit