

IHCeasy Ready-to-use IHC Kits

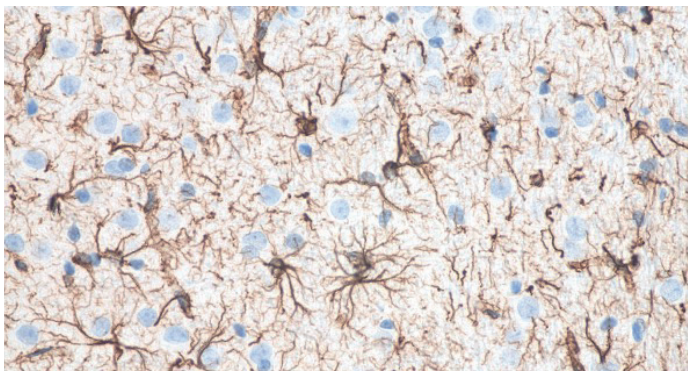


You are steps away from high-quality IHC data

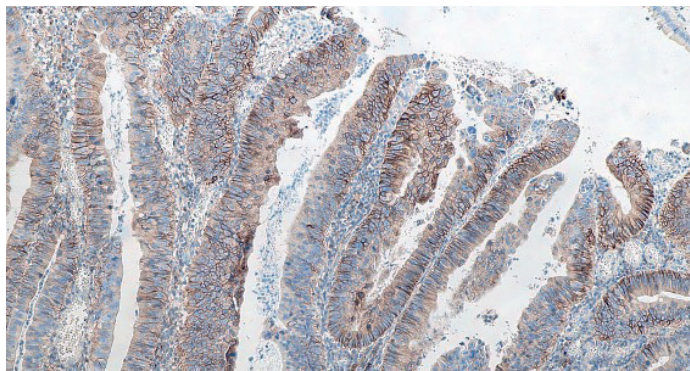
The IHCeasy Ready-to-use IHC Kits are designed to provide all the antibodies and reagents needed to stain your tissue samples, including the primary antibody. Each kit's protocol has been thoroughly optimized to provide the best staining for your protein of interest. The reagents in the kit require minimal preparation – simply apply them directly to your tissue sample and you're steps away from obtaining high-quality IHC data.

What's in the box?

- ✓ Primary Antibody
- ✓ Antigen Retrieval Buffer
- ✓ Blocking Buffer
- ✓ Washing Buffer
- ✓ Secondary Antibody
- ✓ DAB Chromogen
- ✓ Counter Stain
- ✓ Signal Enhancer
- ✓ Mounting Media



Immunohistochemical analysis of paraffin-embedded rat brain tissue slide using KHC0002 (GFAP IHC Kit).

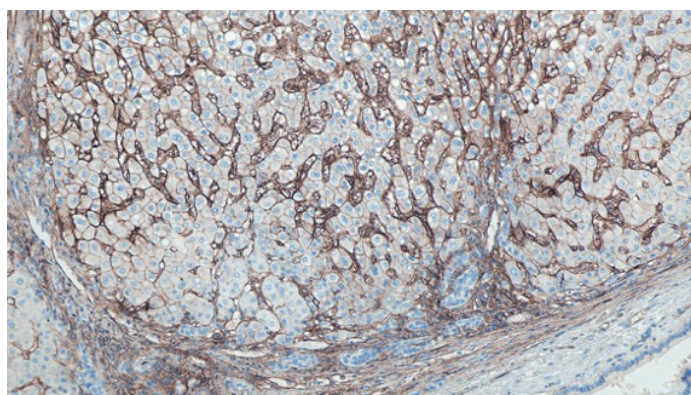


Immunohistochemical analysis of paraffin-embedded human colon cancer tissue slide using KHC0030 (CD44 IHC Kit).

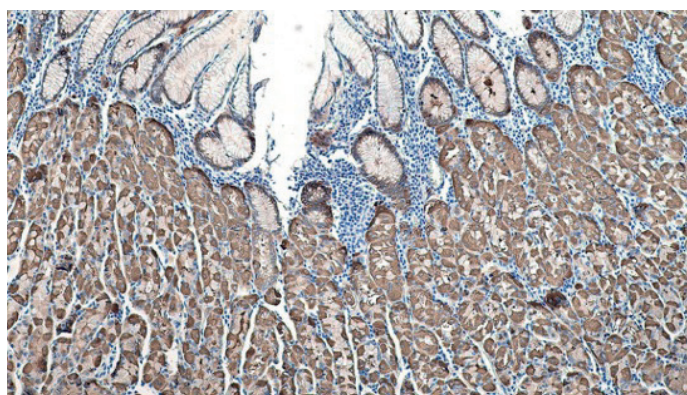
New Stem Cells Kits

Cat No.	Protein Target	Primary Antibody Clonality	Species Reactivity
KHC0002	GFAP	Mouse Monoclonal	Human, rat, mouse
KHC0008	Beta Catenin	Mouse Monoclonal	Human, rat, mouse
KHC0010	E-cadherin	Mouse Monoclonal	Human, rat
KHC0011	N-cadherin	Mouse Monoclonal	Human, rat, mouse
KHC0022	CD31	Mouse Monoclonal	Human
KHC0023	CD34	Mouse Monoclonal	Human
KHC0024	CD105	Mouse Monoclonal	Human
KHC0026	CD13	Mouse Monoclonal	Human, rat, mouse
KHC0028	CD14	Mouse Monoclonal	Human
KHC0030	CD44	Mouse Monoclonal	Human
KHC0035	Galectin-3	Mouse Monoclonal	Human
KHC0039	Vimentin	Mouse Monoclonal	Human
KHC0053	Smooth muscle actin	Rabbit Recombinant	Human, rat, mouse
KHC0080	ICAM-1	Mouse Monoclonal	Human
KHC0081	CD90	Mouse Monoclonal	Human
KHC0084	ALDH1A1	Mouse Monoclonal	Human, rat
KHC0085	EPCAM	Mouse Monoclonal	Human
KHC0086	TP63	Mouse Monoclonal	Human, rat, mouse
KHC0090	GLUT3	Rabbit Polyclonal	Human, rat, mouse

Browse our full selection of kits at ptglab.com



Immunohistochemical analysis of paraffin-embedded human liver cancer tissue slide using KHC0080 (ICAM-1 IHC Kit).



Immunohistochemical analysis of paraffin-embedded human stomach tissue slide using KHC0084 (ALDH1A1 IHC Kit).