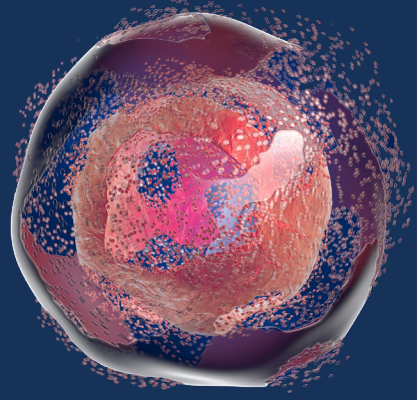


INTRODUCING

ANTIBODY KITS FOR STUDYING Ferroptosis



Ferroptosis has gained significant attention in recent years due to its potential in cancer therapy and its involvement in multiple diseases.

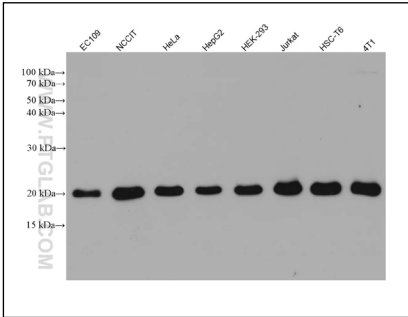
Proteintech now offers antibody kits for ferroptosis research. Our ferroptosis antibody kits are:

- Perfect for sampling antibodies against popular ferroptosis markers
- Validated in multiple applications
- Saves time spent searching for different antibodies with specific validations
- Saves 30% compared to buying antibodies separately

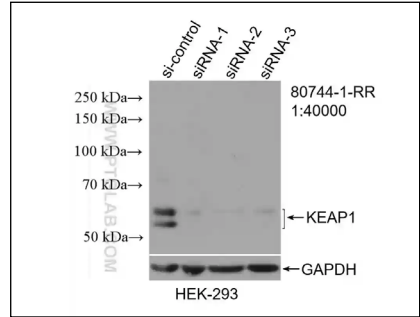


Scan to view ferroptosis antibody kits

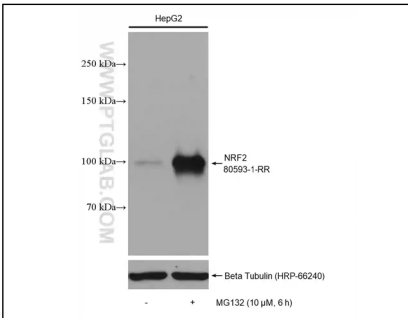
Ferroptosis Essentials Antibody Kit	Ferroptosis Expanded Antibody Kit	Targets Covered	Applications
✓	✓	GPX4	WB, IHC, IF, CoIP, ELISA
✓	✓	SLC7A11	WB, RIP, IHC, IF, ELISA
✓	✓	KEAP1	WB, IHC, IF, ELISA
✓	✓	NRF2	WB, IP, IHC, IF, ELISA
✓	✓	ACSL4	WB, IP, IHC, IF, ELISA
	✓	FSP1	WB, IP, IHC, ELISA
	✓	SLC3A2	WB, IP, IHC, IF, FC, ELISA
	✓	HO-1	WB, IP, IHC, IF, FC, CoIP, ELISA
	✓	DMT1	WB, IHC, ELISA
	✓	DHODH	WB, IP, IHC, IF, FC, ELISA



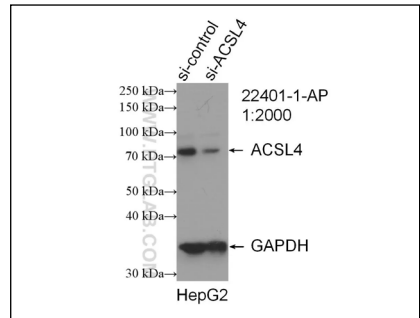
WB analysis of various cell lysates with GPX4 antibody (67763-1-Ig).



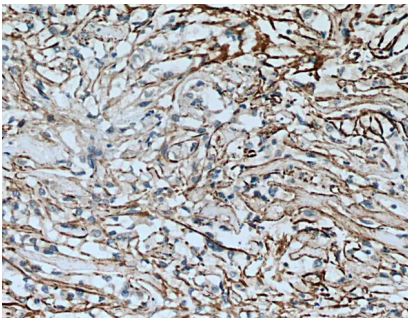
WB analysis of HEK293 cells transfected with either control or KEAP1 siRNA using KEAP1 antibody (80744-1-RR).



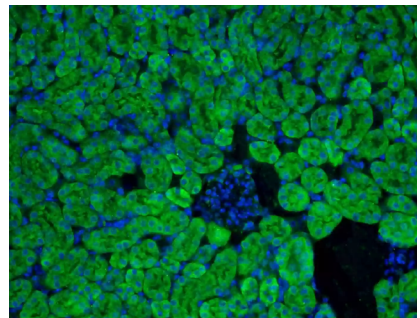
WB analysis of untreated or MG132 treated HepG2 cells using NRF2 antibody (80593-1-RR).



WB analysis of HepG2 cells transfected with either control siRNA or ACSL4 siRNA using ACSL4 antibody (22401-1-AP).



IHC analysis of human renal cell carcinoma with SLC7A11/xCT antibody (26864-1-AP).



IF analysis of mouse kidney tissue stained with DHODH antibody (14877-1-AP) and CoralLite@488-Conjugated AffiniPure Goat Anti-Rabbit IgG(H+L).