



proteintech®

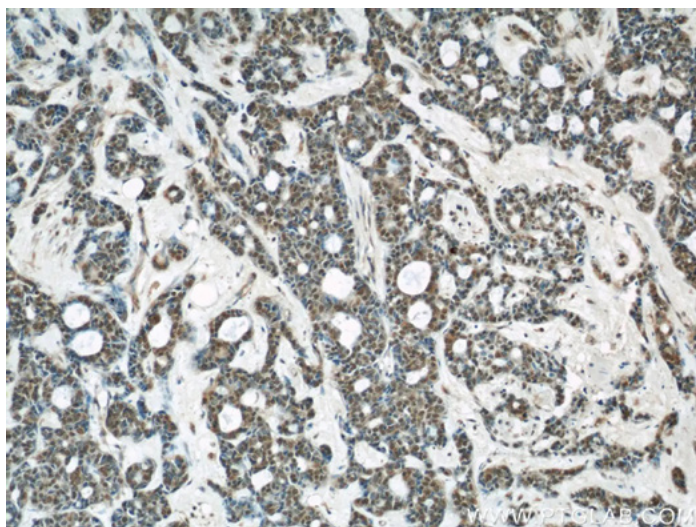
Phospho and Total Protein Antibodies for Signaling Studies

Protein phosphorylation plays a critical role in the regulation of various signal transduction pathways, thereby highlighting the significance of analyzing the phosphorylation status of target proteins in signaling studies.

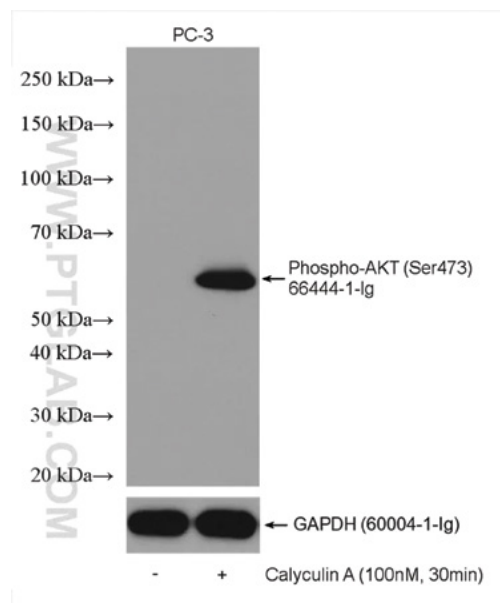
Proteintech offers monoclonal, polyclonal and recombinant antibodies against a wide range of phosphorylated protein targets and the corre-

sponding total protein targets that are integral to several key signaling pathways. All our antibodies are rigorously tested by Proteintech scientists to ensure high specificity and are validated in multiple applications. Several of our antibodies are available conjugated to fluorescent CoraLite® dyes making them suitable for immunofluorescence and flow cytometry applications.

AKT1



▲ IHC analysis of paraffin-embedded human cervical cancer tissue using AKT antibody (60203-2-Ig) at dilution of 1:50 (under 10x lens).



▲ Non-treated PC-3 and Calyculin A treated PC-3 cells were subjected to SDS PAGE followed by western blot with Phospho-AKT (Ser473) antibody (66444-1-Ig). The membrane was stripped and re-blotting with GAPDH antibody as loading control.

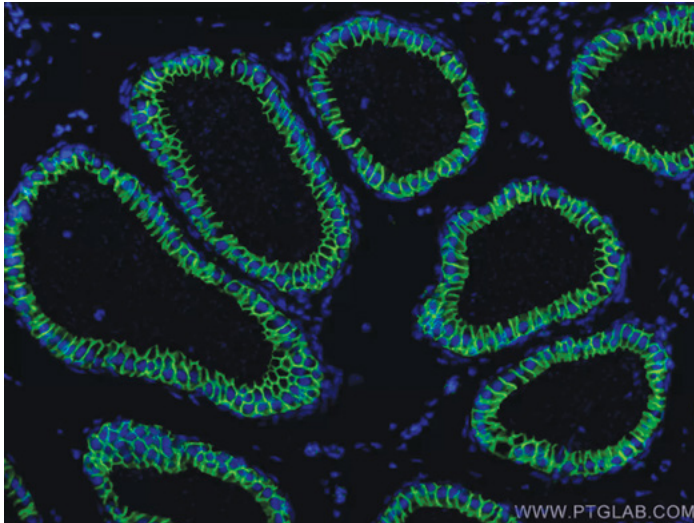
Unconjugated Antibodies

Catalog No.	Antigen	Host	Applications	Reactivity
60203-2-Ig	AKT	Mouse	FC, IF, IHC, IP, WB, ELISA	Human, Mouse, Rat
10176-2-AP	AKT	Rabbit	FC, IF, IHC, IP, WB, ELISA	Human, Mouse, Rat
80457-1-RR	AKT1	Rabbit	IHC, WB, ELISA	Human, Mouse
80455-1-RR	Phospho-AKT (Ser473)	Rabbit	FC, WB, ELISA	Human
66444-1-Ig	Phospho-AKT (Ser473)	Mouse	FC, IHC, WB, ELISA	Human, Mouse
28731-1-AP	Phospho-AKT (Ser473)	Rabbit	WB, ELISA	Human, Mouse, Rat
29163-1-AP	Phospho-AKT (Thr308)	Rabbit	WB, ELISA	Human
80462-1-RR	Phospho-AKT1 (Ser473)	Rabbit	FC, WB, ELISA	Human, Mouse

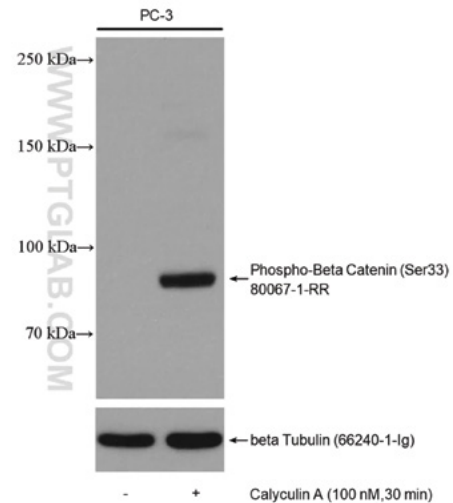
Conjugated Antibodies

Catalog No.	Antigen	Host	Applications	Reactivity
CL594-60203	AKT	Mouse	IF	Human, Mouse, Rat
CL488-60203	AKT	Mouse	IF	Human, Mouse, Rat
CL647-80462	Phospho-AKT1 (Ser473)	Rabbit	FC (Intra)	Human, Mouse
CL594-80462	Phospho-AKT1 (Ser473)	Rabbit	FC (Intra)	Human, Mouse
CL555-80462	Phospho-AKT1 (Ser473)	Rabbit	FC (Intra)	Human, Mouse
CL488-80462	Phospho-AKT1 (Ser473)	Rabbit	FC (Intra)	Human, Mouse
CL594-80455	Phospho-AKT (Ser473)	Rabbit	FC (Intra)	Human
CL594-66444	Phospho-AKT (Ser473)	Mouse	FC (Intra)	Human, Mouse
CL555-80455	Phospho-AKT (Ser473)	Rabbit	FC (Intra)	Human
CL488-66444	Phospho-AKT (Ser473)	Mouse	FC (Intra), IF	Human, Mouse

Beta Catenin



▲ Immunofluorescent analysis of mouse testis tissue using Beta Catenin antibody (51067-2-AP) at dilution of 1:1000 and CoralLite®488-Conjugated AffiniPure Goat Anti-Rabbit IgG(H+L).



▲ Non-treated PC-3 and Calyculin A treated PC-3 cells were subjected to SDS PAGE followed by western blot with Phospho-Beta Catenin (Ser33) antibody (80067-1-RR). The membrane was stripped and re-blotting with beta tubulin antibody as loading control.

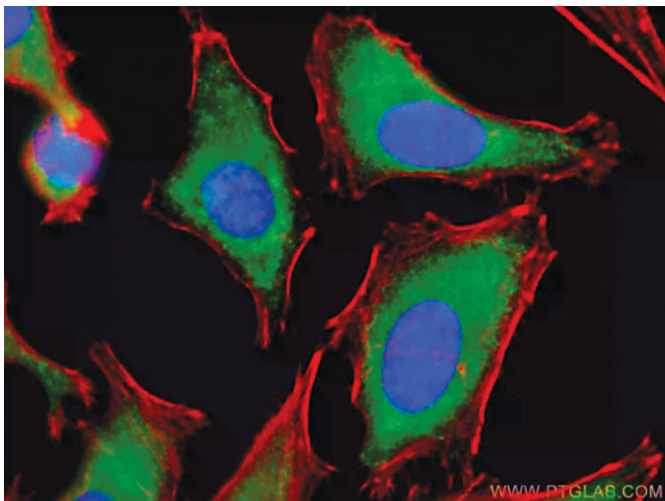
Unconjugated Antibodies

Catalog No.	Antigen	Host	Applications	Reactivity
80488-1-RR	Beta Catenin	Rabbit	IF, IHC, WB, ELISA	Human, Pig, Mouse, Rat, Zebrafish
66379-1-Ig	Beta Catenin	Mouse	IF, IHC, IP, WB, ELISA	Human, Mouse, Rat, Pig
51067-2-AP	Beta Catenin	Rabbit	IF, IHC, IP, WB, ELISA	Human, Mouse, Rat, Pig
17565-1-AP	Beta Catenin	Rabbit	IF, IHC, WB, ELISA	Human, Mouse, Rat
80067-1-RR	Phospho-Beta Catenin (Ser33)	Rabbit	WB, ELISA	Human, Mouse, Rat
28772-1-AP	Phospho-Beta Catenin (Ser33)	Rabbit	WB, ELISA	Human
80084-1-RR	Phospho-Beta Catenin (Ser675)	Rabbit	WB, ELISA	Human, Mouse, Rat
28853-1-AP	Phospho-Beta Catenin (Ser675)	Rabbit	WB, ELISA	Human

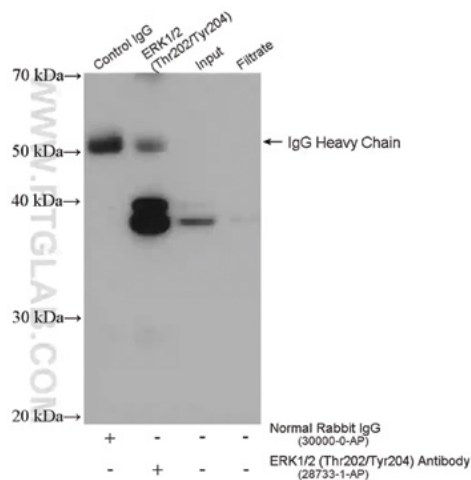
Conjugated Antibodies

Catalog No.	Antigen	Host	Applications	Reactivity
CL647-51067	Beta Catenin	Rabbit	IF	Human, Mouse, Rat, Pig
CL594-66379	Beta Catenin	Mouse	IF	Human, Mouse, Rat, Pig
CL594-17565	Beta Catenin	Rabbit	FC (Intra), IF	Human, Mouse, Rat
CL555-51067	Beta Catenin	Rabbit	IF	Human, Mouse, Rat, Pig
CL488-66379	Beta Catenin	Mouse	FC (Intra), IF	Human, Mouse, Rat, Pig
CL488-51067	Beta Catenin	Rabbit	IF	Human, Mouse, Rat, Pig
CL488-17565	Beta Catenin	Rabbit	FC (Intra), IF	Human, Mouse, Rat
CL488-80067	Phospho-Beta Catenin (Ser33)	Rabbit	FC (Intra)	Human
CL647-80067	Phospho-Beta Catenin (Ser33)	Rabbit	FC (Intra)	Human

ERK 1/2



▲ Immunofluorescent analysis of (-20°C Ethanol) fixed HeLa cells using CoraLite® 488 ERK1/2 antibody (CL488-66192, Clone: 4G8A11) at dilution of 1:100 and CL594-Phalloidin (red).



▲ IP result of anti-Phospho-ERK1/2 (Thr202/Tyr204)(IP:28733-1-AP, 2ug; Detection: 28733-1-AP 1:1000) with Calyculin A treated PC-3 cells lysate 1552 ug.

Unconjugated Antibodies

Catalog No.	Antigen	Host	Applications	Reactivity
11257-1-AP	ERK1/2	Rabbit	FC, IF, IHC, WB, ELISA	Human, Mouse, Rat
80031-1-RR	Phospho-ERK1/2 (Thr202/Tyr204)	Rabbit	WB, ELISA	Human
28733-1-AP	Phospho-ERK1/2 (Thr202/Tyr204)	Rabbit	IP, WB, ELISA	Human, Mouse, Rat

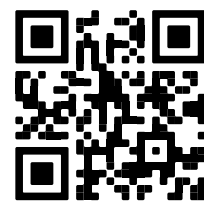
Conjugated Antibodies

Catalog No.	Antigen	Host	Applications	Reactivity
CL650-67170	ERK1/2	Mouse	FC (Intra)	Human, Mouse, Rat
CL650-11257	ERK1/2	Rabbit	FC (Intra)	Human, Mouse
CL594-66192	ERK1/2	Mouse	FC (Intra), IF	Human, Mouse
CL488-66192	ERK1/2	Mouse	FC (Intra), IF	Human, Mouse
CL488-11257	ERK1/2	Rabbit	FC (Intra)	Human, Mouse

FlexAble

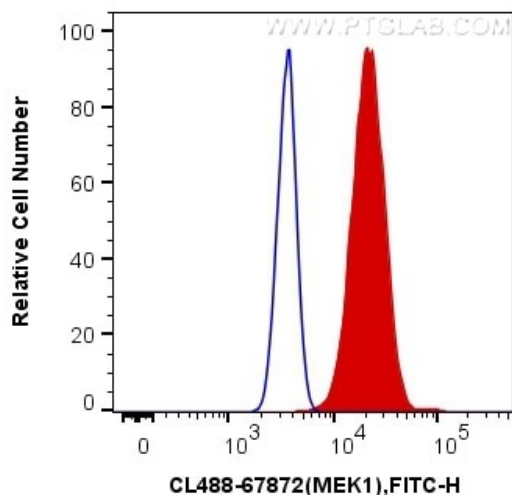
Any antibody. Any color. Any time.

Can't find conjugated fluorescent antibodies against your protein targets? Try our new **FlexAble Antibody Labeling Kits** to label your favorite primary antibodies with any color of your choice.

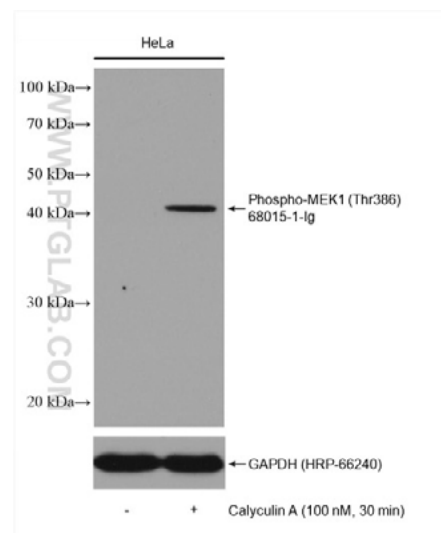


Learn more

MEK 1/2



▲ A431 cells were intracellularly stained with 0.4 ug CoraLite®488 Anti-Human MEK1 (CL488-67872, Clone:3F6D7) (red), or 0.4 ug control antibody.



▲ Non-treated HeLa cells and Calyculin A treated HeLa cells were subjected to SDS PAGE followed by western blot with Phospho-MEK1 (Thr386) antibody (68015-1-Ig). The membrane was stripped and re-blotting with GAPDH antibody as loading control.

Unconjugated Antibodies

Catalog No.	Antigen	Host	Applications	Reactivity
67872-1-Ig	MEK1	Mouse	WB, ELISA	Human, Rat, Mouse
67410-1-Ig	MEK2	Mouse	IF, IHC, WB, ELISA	Human, Mouse, Rat
11049-1-AP	MEK1/2	Rabbit	IF, IP, WB, ELISA	Human
51080-1-AP	MEK1-Specific	Rabbit	IHC, ELISA	Human
81304-1-RR	Phospho-MEK1 (Thr386)	Rabbit	WB, ELISA	Human
68047-1-Ig	Phospho-MEK1 (Ser298)	Mouse	WB, ELISA	Human
68015-1-Ig	Phospho-MEK1 (Thr386)	Mouse	WB, ELISA	Human, Mouse
67873-1-Ig	Phospho-MEK1 (Thr292)	Mouse	WB, ELISA	Human, Mouse, Rat
28935-1-AP	Phospho-MEK1 (Thr386)	Rabbit	WB, ELISA	Human
28933-1-AP	Phospho-MEK1 (Thr286)	Rabbit	WB, ELISA	Human
28930-1-AP	Phospho-MEK1 (Thr292)	Rabbit	WB, ELISA	Human
28955-1-AP	Phospho-MEK2 (Thr394)	Rabbit	WB, ELISA	Human, Mouse

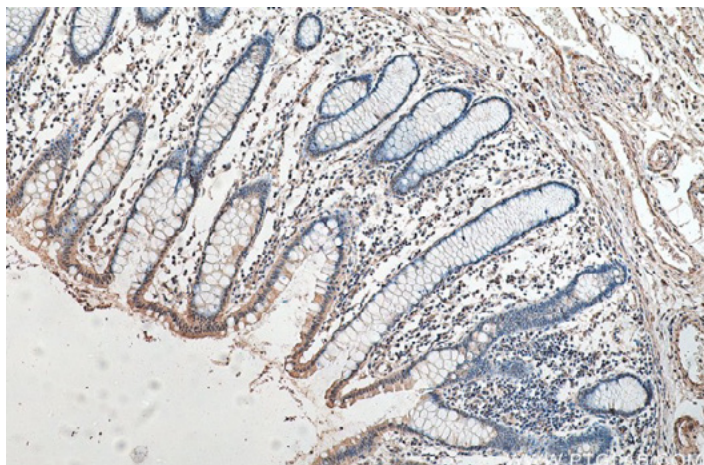
Conjugated Antibodies

Catalog No.	Antigen	Host	Applications	Reactivity
CL594-67410	MEK2	Mouse	IF	Human
CL488-67410	MEK2	Mouse	IF	Human
CL488-67872	MEK1	Mouse	FC (Intra), IF	Human, Rat, Mouse

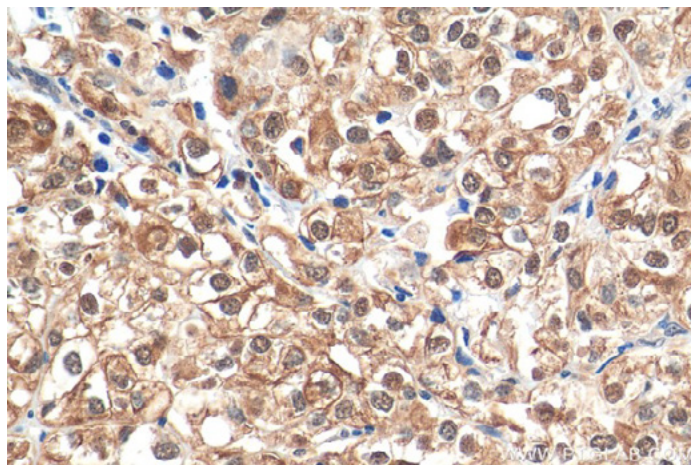


Proteintech offers a variety of antibodies and supporting products to help you achieve publication-worthy western blot data.
www.ptglab.com/applications/western-blot

p53



▲ IHC analysis of human colon cancer tissue using Phospho-P53 (Ser46) antibody (67900-1-Ig) at dilution of 1:1000 (under 10x lens).



▲ IHC analysis of paraffin-embedded human endometrial cancer tissue using P53 antibody (10442-1-AP) at dilution of 1:200 (under 40x lens).

Unconjugated Antibodies

Catalog No.	Antigen	Host	Applications	Reactivity
80077-1-RR	P53	Rabbit	IF, WB, ELISA	Human, Mouse, Rat, Zebrafish
60283-2-Ig	P53	Mouse	IHC, WB, ELISA	Human, Rat, Mouse
21891-1-AP	P53	Rabbit	IF, IHC, IP, WB, ELISA	Human, Rat
10442-1-AP	P53	Rabbit	IF, IHC, IP, WB, ELISA	Human, Rat, Mouse
80195-1-RR	Phospho-P53 (Ser15)	Rabbit	WB, ELISA	Human
67900-1-Ig	Phospho-P53 (Ser46)	Mouse	FC, IHC, WB, ELISA	Human
67826-1-Ig	Phospho-P53 (Ser15)	Mouse	WB, ELISA	Human
28963-1-AP	Phospho-P53 (Ser392)	Rabbit	WB, ELISA	Human
28961-1-AP	Phospho-P53 (Ser15)	Rabbit	IF, WB, ELISA	Human
28960-1-AP	Phospho-P53 (Ser46)	Rabbit	WB, ELISA	Human

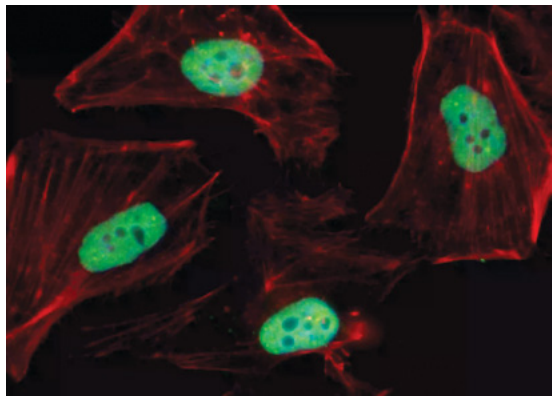
Conjugated Antibodies

Catalog No.	Antigen	Host	Applications	Reactivity
CL647-80077	P53	Rabbit	FC (Intra)	Human, Mouse, Rat
CL594-80077	P53	Rabbit	FC (Intra), IF	Human, Mouse, Rat
CL594-10442	P53	Rabbit	FC (Intra), IF	Human, Rat, Mouse
CL555-80077	P53	Rabbit	FC (Intra), IF	Human, Mouse, Rat
CL488-80077	P53	Rabbit	FC (Intra), IF	Human, Mouse, Rat
CL488-10442	P53	Rabbit	FC (Intra), IF	Human, Rat, Mouse
CL647-67826	Phospho-P53 (Ser15)	Mouse	FC (Intra)	Human
CL488-67826	Phospho-P53 (Ser15)	Mouse	FC (Intra)	Human

IHC your way.

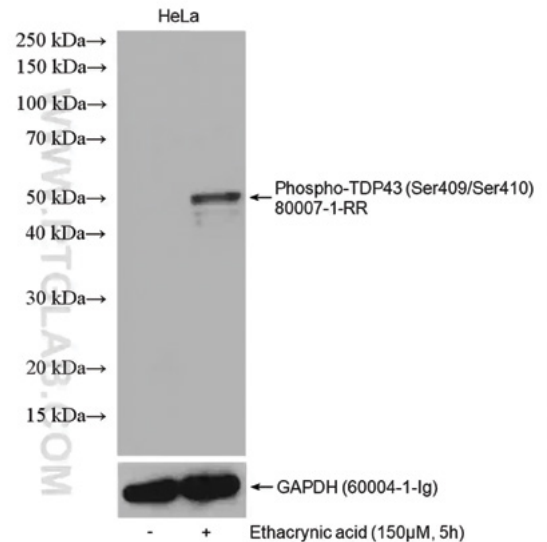
Proteintech offers a wide range of products to support all your IHC needs.
www.ptglab.com/applications/immunohistochemistry

TDP43



▶ Non-treated and ethacrynic acid treated HeLa cells were subjected to SDS PAGE followed by western blot with Phospho-TDP43 (Ser409/410) antibody (80007-1-RR). The membrane was stripped and re-blotted with GAPDH antibody as loading control.

◀ Immunofluorescent analysis of (4% PFA) fixed HeLa cells using TDP-43 antibody (10782-2-AP) at dilution of 1:200 and CoraLite®488-Conjugated AffiniPure Goat Anti-Rabbit IgG(H+L), and CL594-Phalloidin (red).



Unconjugated Antibodies

Catalog No.	Antigen	Host	Applications	Reactivity
80007-1-RR	Phospho-TDP43 (Ser409/410)	Rabbit	FC, IHC, WB, ELISA	Human, Mouse
66318-1-Ig	Phospho-TDP43 (Ser409/410)	Mouse	WB, ELISA	Human, Mouse, Rat
66079-1-Ig	Phospho-TDP43 (Ser403/404)	Mouse	FC, WB, ELISA	Human, Mouse
22309-1-AP	Phospho-TDP43 (Ser409/410)	Rabbit	WB, ELISA	Human, Mouse
80001-1-RR	TDP-43	Rabbit	FC, IHC, WB, ELISA	Human, Mouse, Rat
66734-1-Ig	TDP-43	Mouse	FC, IHC, WB, ELISA	Human, Rat, Mouse
18280-1-AP	TDP-43	Rabbit	FC, IF, IHC, IP, WB, ELISA	Human, Mouse, Rat
18280-1-AP	TDP-43	Rabbit	FC, IF, IHC, IP, WB, ELISA	Human, Mouse, Rat
10782-2-AP	TDP-43	Rabbit	FC, IF, IHC, WB, ELISA	Human, Mouse, Rat, Zebrafish
81350-1-RR	TDP-43 (C-terminal)	Rabbit	IF, IHC, WB, ELISA	Human, Mouse, Rat
67345-1-Ig	TDP-43 (C-terminal)	Mouse	FC, IF, IHC, WB, ELISA	Human, Mouse, Rat
12892-1-AP	TDP-43 (C-terminal)	Rabbit	IF, IHC, IP, WB, ELISA	Human, Mouse, Rat
80002-1-RR	TDP-43 (for IF/FC)	Rabbit	FC, IF, ELISA	Human, Mouse, Rat
60019-2-Ig	TDP-43 (Human specific)	Mouse	FC, IHC, IP, WB, ELISA	Human

Conjugated Antibodies

Catalog No.	Antigen	Host	Applications	Reactivity
CL488-10782	TDP-43	Rabbit	FC (Intra), IF	Human
Biotin-10782	TDP-43	Rabbit	IHC	Human, Mouse, Rat, Zebrafish
CL594-67345	TDP-43 (C-terminal)	Mouse	IF	Human, Mouse, Rat
CL594-12892	TDP-43 (C-terminal)	Rabbit	FC (Intra), IF	Human, Mouse, Rat
CL488-67345	TDP-43 (C-terminal)	Mouse	IF	Human, Mouse, Rat
CL488-12892	TDP-43 (C-terminal)	Rabbit	FC (Intra), IF	Human, Mouse, Rat
CL594-80002	TDP-43 (for IF/FC)	Rabbit	FC (Intra), IF	Human, Mouse, Rat
CL488-80002	TDP-43 (for IF/FC)	Rabbit	FC (Intra), IF	Human, Mouse, Rat
CL650-60019	TDP-43 (Human specific)	Mouse	FC (Intra)	Human
CL647-80007	Phospho-TDP43 (Ser409/410)	Rabbit	FC (Intra)	Human, Mouse
CL488-80007	Phospho-TDP43 (Ser409/410)	Rabbit	FC (Intra)	Human, Mouse



Introducing our Online Pathway Poster Library

Download or request a printed poster to decorate your lab



Legend

→	Indirect Activation	—	Inhibit
→	Activation	+P	Phosphorylation
→	Direct Activation	+	Ubiquitination

Antibody	Catalog No.	Type	Applications tested
β-Catenin	13833_LAP	Rabbit Prox	ELISA, WB, IP
β-Catenin	12648_LAP	Rabbit Prox	ELISA, WB
β-Catenin	13973_LAP	Rabbit Prox	ELISA, WB
β-Catenin	13977_LAP	Rabbit Prox	ELISA, WB
β-Catenin	13981_LAP	Rabbit Prox	ELISA, WB
β-Catenin	12645_LAP	Rabbit Prox	ELISA, WB
β-Catenin	13975_LAP	Rabbit Prox	ELISA, WB
β-Catenin	13976_LAP	Rabbit Prox	ELISA, WB
β-Catenin	13978_LAP	Rabbit Prox	ELISA, WB
β-Catenin	13979_LAP	Rabbit Prox	ELISA, WB
β-Catenin	13980_LAP	Rabbit Prox	ELISA, WB
β-Catenin	13982_LAP	Rabbit Prox	ELISA, WB
β-Catenin	13984_LAP	Rabbit Prox	ELISA, WB
β-Catenin	13985_LAP	Rabbit Prox	ELISA, WB
β-Catenin	13986_LAP	Rabbit Prox	ELISA, WB
β-Catenin	13987_LAP	Rabbit Prox	ELISA, WB
β-Catenin	13988_LAP	Rabbit Prox	ELISA, WB
β-Catenin	13989_LAP	Rabbit Prox	ELISA, WB
β-Catenin	13990_LAP	Rabbit Prox	ELISA, WB
β-Catenin	13991_LAP	Rabbit Prox	ELISA, WB
β-Catenin	13992_LAP	Rabbit Prox	ELISA, WB
β-Catenin	13993_LAP	Rabbit Prox	ELISA, WB
β-Catenin	13994_LAP	Rabbit Prox	ELISA, WB
β-Catenin	13995_LAP	Rabbit Prox	ELISA, WB
β-Catenin	13996_LAP	Rabbit Prox	ELISA, WB
β-Catenin	13997_LAP	Rabbit Prox	ELISA, WB
β-Catenin	13998_LAP	Rabbit Prox	ELISA, WB
β-Catenin	13999_LAP	Rabbit Prox	ELISA, WB
β-Catenin	14000_LAP	Rabbit Prox	ELISA, WB