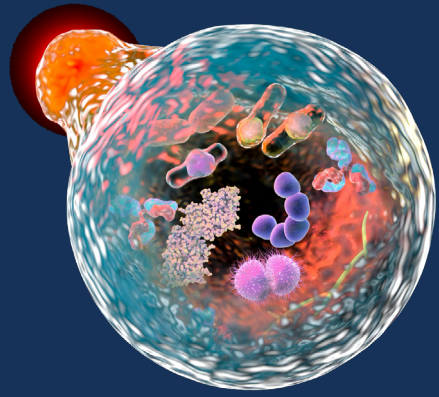


INTRODUCING

# ANTIBODY KITS FOR STUDYING Autophagy



Autophagy has been shown to play critical roles in the physiology and pathology of multicellular organisms.

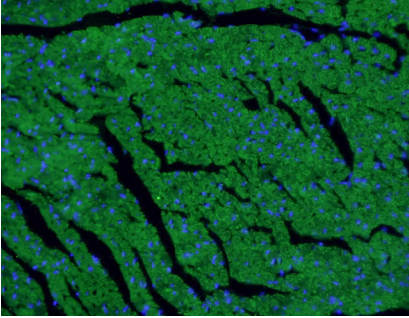
Proteintech now offers antibody kits for autophagy research. Our autophagy antibody kits are:

- Perfect for sampling antibodies against popular autophagy markers
- Validated in multiple applications
- Saves time spent searching for different antibodies with specific validations
- Saves 30% compared to buying antibodies separately

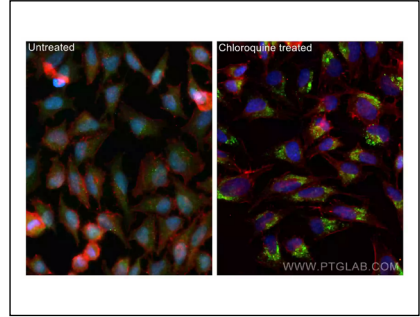


Scan to view autophagy  
antibody kits

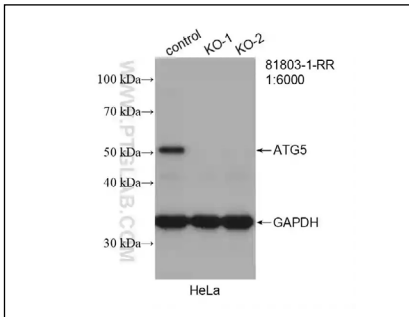
Autophagy Essentials Antibody Kit	Autophagy Expanded Antibody Kit	Targets Covered	Applications
✓	✓	Beclin1	WB, IP, IHC, IF, ELISA
✓	✓	LC3	WB, IHC, IF, ELISA
✓	✓	p62	WB, IP, IHC, IF, ELISA
✓	✓	ATG5	WB, IP, IHC, ELISA
✓	✓	LAMP1	WB, IP, IHC, IF, FC, ELISA
	✓	ULK1	WB IHC, IF, ELISA
	✓	ATG16 L1	WB, IHC, IF, ELISA
	✓	ATG12	WB, IP, IHC, IF, CoIP, ELISA
	✓	Ubiquitin	WB, IHC, IF, ELISA
	✓	ATG9A	WB, IHC, IF, ELISA



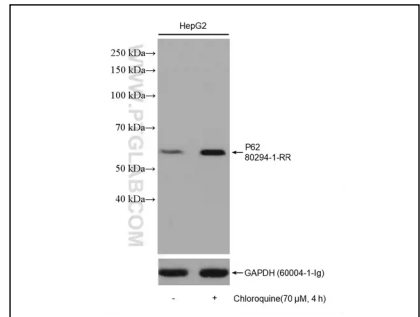
IF analysis of mouse heart tissue stained with Beclin 1 antibody (66665-1-Ig) and Alexa Fluor 488-Conjugated AffiniPure Goat Anti-Mouse IgG(H+L).



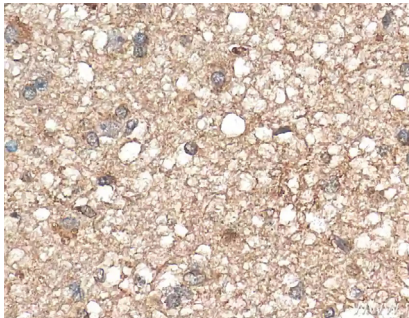
IF analysis of untreated or CQ treated Hep2 cells stained with LC3 antibody (81004-1-RR), CoraLite488-Conjugated AffiniPure Goat Anti-Rabbit IgG(H+L), and CoraLite®594 Beta Actin antibody.



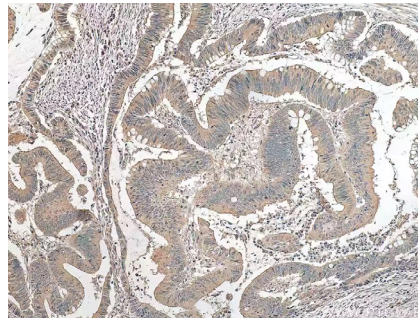
WB analysis of wildtype and ATG5 knockout HeLa cells with ATG5 antibody (81803-1-RR).



WB analysis of untreated or CQ treated HepG2 cells with p62 antibody (80294-1-RR).



IHC analysis of human glioma tissue stained with LAMP1 antibody (21997-1-AP).



IHC analysis of human colon cancer tissue stained with ATG16L1 antibody (29445-1-AP).