

ANTIBODIES FOR NEURO-RELATED DISEASES

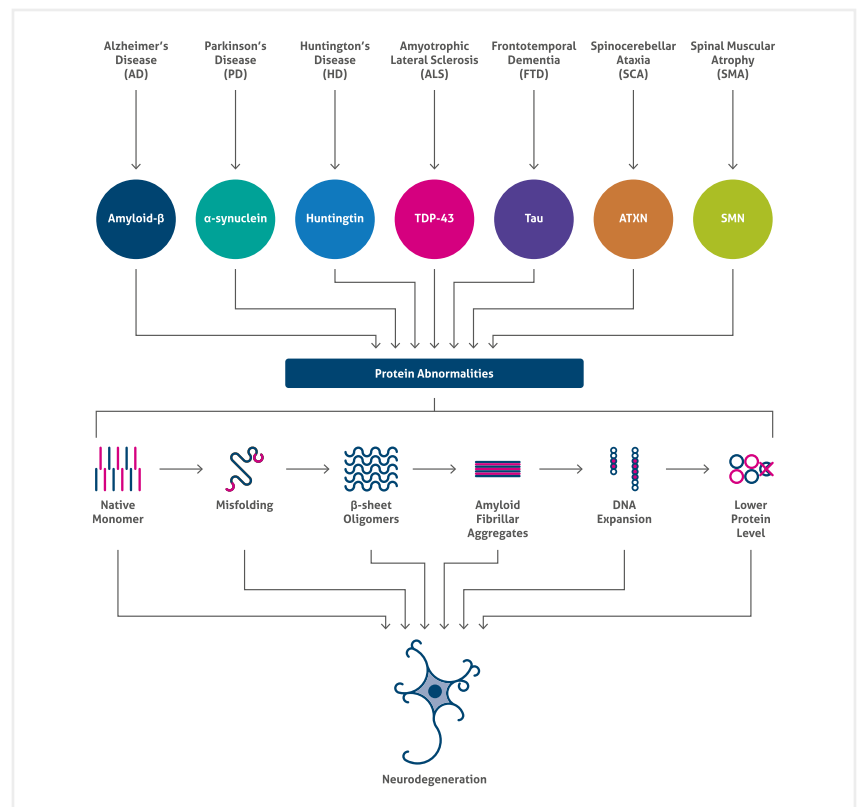
www.ptglab.com

Introduction

Neurodegenerative diseases, such as Amyotrophic lateral sclerosis (ALS), Alzheimer's disease (AD), Frontotemporal dementia (FTD), Huntington's disease (HD), Parkinson's disease (PD), Spinocerebellar ataxia (SCA), and Spinal Muscular Atrophies (SMAs), are incurable and debilitating disorders.

With an increasingly aging global population, the economic, as well as human impact of these conditions is expected to increase unless reliable tools and care strategies can be developed. Proteintech®'s product range offers unprecedented scientific potential for neurodegenerative disease studies, which can help to further new therapeutic strategies.

Protein Abnormalities In Neurodegenerative Diseases



Please Note: All products featured in this product focus are for research use only.

©Proteintech® and the Proteintech logo are trademarks of Proteintech Group registered in the US Patent and Trademark Office.

FOCUS ANTIBODIES

TDP-43: Key Protein In Neurodegenerative Disorders

Focus Antibody
TDP-43

Catalog Number
10782-2-AP

Type
Rabbit Polyclonal

Applications
ChIP, CoIP, ELISA, FC, IF, IHC, IP, RIP, WB

781 Publications

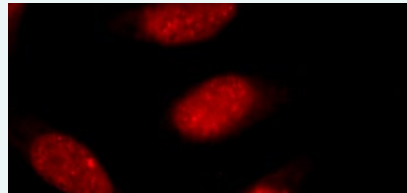
KD/KO Validated

For over 10 years hyperphosphorylated, ubiquitinated, and/or cleaved forms of TAR DNA-binding protein 43 (TDP-43) protein have been known as abnormalities in FTD and ALS disorders.

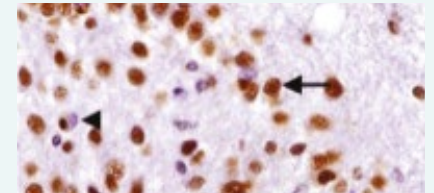
A higher number of neurodegenerative diseases associated with pathological aggregates of TDP-43 have led to its new designation; TDP-43 proteinopathy. TDP-43, encoded by the TARDBP gene, was

identified as a transcription factor involved in transcriptional regulation, mRNA splicing/translation/transport, miRNA biogenesis, and even nuclear body formation.

As an RNA-processing protein, TDP-43 has also been identified as a component of stress granules and translocates to cytoplasm from the nucleus during stress to maintain protein homeostasis.



Immunofluorescent analysis of HepG2 cells, using TARDBP antibody (10782-2-AP) at a 1:50 dilution and Rhodamine-labeled goat anti-rabbit IgG (red).



Formalin-fixed hippocampus section from ALS-dementia was stained with 10782-2-AP. Arrow denotes cells with normal nuclear staining; Arrow head denotes cells with cytoplasmic inclusions.

This image was kindly provided by Linda K. Kwong.

Related Antibodies

| Antibody Name | Catalog Number | Type | Applications |
|----------------|----------------------|-------------|------------------------|
| ALS2 (alsin) | 13988-1-AP | Rabbit Poly | ELISA, IHC, WB |
| AP repeat | 2 24493-1-AP | Rabbit Poly | ELISA |
| ANG (ALS9) | 1 18302-1-AP | Rabbit Poly | ELISA, IHC, WB |
| ATXN2 | 2 21776-1-AP | Rabbit Poly | ELISA, IF, IHC, WB |
| C9orf72 | 5 22637-1-AP | Rabbit Poly | ELISA, IHC, WB |
| C9orf72 | 66140-1-Ig | Mouse Mono | ELISA, IHC, WB |
| CCS/SOD4 | 22802-1-AP | Rabbit Poly | ELISA, IP, WB |
| CHMP2B | 2 12527-1-AP | Rabbit Poly | ELISA, IF, IHC, WB |
| CREST (SS18L1) | 3 12439-1-AP | Rabbit Poly | ELISA, IHC, IP, WB |
| CREST (SS18L1) | 60314-1-Ig | Mouse Mono | ELISA, WB |
| DCTN1 | 55182-1-AP | Rabbit Poly | ELISA, IHC, WB |
| EWS | 55191-1-AP | Rabbit Poly | ELISA, WB |
| FUS/TLS | 29 11570-1-AP | Rabbit Poly | ELISA, IF, IHC, IP, WB |
| FUS/TLS | 7 60160-1-Ig | Mouse Mono | ELISA, IF, IHC, WB |
| GA repeat | 2 24492-1-AP | Rabbit Poly | ELISA |
| GP repeat | 4 24494-1-AP | Rabbit Poly | ELISA, IHC, WB |

00 This number shows the amount of times our antibody has been cited in a publication.

Related Antibodies

Continued

| Antibody Name | | Catalog Number | Type | Applications |
|--------------------------|----|----------------|-------------|----------------------------|
| GR repeat | 6 | 23978-1-AP | Rabbit Poly | ELISA, WB |
| hnRNPA1 | 4 | 11176-1-AP | Rabbit Poly | ELISA, IHC, WB |
| hnRNPA2B1 | 5 | 14813-1-AP | Rabbit Poly | ELISA, IHC, WB |
| MATR3 | | 12202-2-AP | Rabbit Poly | ELISA, IF, WB |
| OPTN | 10 | 10837-1-AP | Rabbit Poly | ELISA, IF, IHC, IP, WB |
| OPTN | | 60293-1-Ig | Mouse Mono | ELISA, WB |
| PCDGF/GRN | 5 | 18410-1-AP | Rabbit Poly | ELISA, IHC, WB |
| PCDGF/GRN | | 10053-1-AP | Rabbit Poly | ELISA, IHC, WB |
| PCDGF/GRN | | 25823-1-AP | Rabbit Poly | ELISA, WB |
| PFN1 | 3 | 11680-1-AP | Rabbit Poly | ELISA, IHC, WB |
| Phospho-TDP-43 (403/404) | 1 | 66079-1-Ig | Mouse Mono | ELISA, WB |
| Phospho-TDP-43 (409/410) | 5 | 22309-1-AP | Rabbit Poly | ELISA, IF, WB |
| PR repeat | 5 | 23979-1-AP | Rabbit Poly | ELISA |
| PSEN | 1 | 16163-1-AP | Rabbit Poly | ELISA, WB |
| SQSTM1(p62) | 51 | 18420-1-AP | Rabbit Poly | ELISA, FC, IF, IHC, IP, WB |
| SQSTM1/p62 | | 55274-1-AP | Rabbit Poly | ELISA, IHC, WB |
| SOD1 | 14 | 10269-1-AP | Rabbit Poly | ELISA, IHC, IP, WB |
| SOD2 | 9 | 24127-1-AP | Rabbit Poly | ELISA, IF, IHC, WB |
| TAF15 | | 24235-1-AP | Rabbit Poly | ELISA, IHC, WB |
| Tau | 2 | 10274-1-AP | Rabbit Poly | ELISA, IHC, WB |
| TDP-43 (C-terminal) | 50 | 12892-1-AP | Rabbit Poly | ELISA, IF, IHC, IP, WB |
| TDP-43 (full length) | | 18280-1-AP | Rabbit Poly | ELISA, IHC, IP, WB |
| TDP-43 (Human specific) | 36 | 60019-2-Ig | Mouse Mono | ELISA, IF, IHC, WB |
| TMEM106B | 2 | 20995-1-AP | Rabbit Poly | ELISA, IHC, WB |
| TMEM106B | | 60333-1-Ig | Mouse Mono | ELISA, WB |
| TNPO1/TRN1 | | 20679-1-AP | Rabbit Poly | ELISA, WB |
| UBQLN2 | | 23449-1-AP | Rabbit Poly | ELISA, IHC, WB |
| VAPB (ALS8) | 6 | 14477-1-AP | Rabbit Poly | ELISA, FC, IF, IHC, IP, WB |
| VAPB (ALS8) | | 66191-1-Ig | Mouse Mono | ELISA, IF, IHC, WB |
| VCP | 2 | 10736-1-AP | Rabbit Poly | ELISA, IHC, WB |
| VCP | | 60316-1-Ig | Mouse Mono | ELISA, IHC, WB |

00 This number shows the amount of times our antibody has been cited in a publication.

OPTIMIZE YOUR ANTIBODY EXPERIMENTS WITH PROTEINTECH.



G3BP1: Indicator Of Stress Granules Pathophysiology

Focus Antibody
G3BP1

Catalog Number
13057-2-AP

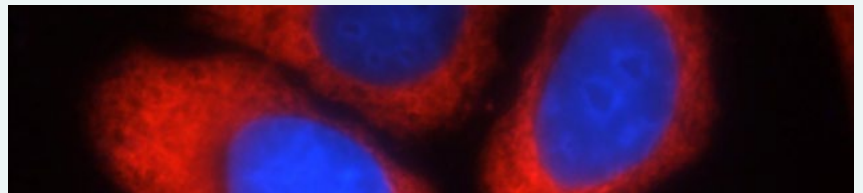
Type
Rabbit Polyclonal

Applications
ELISA, FC, IF, IHC, IP, WB

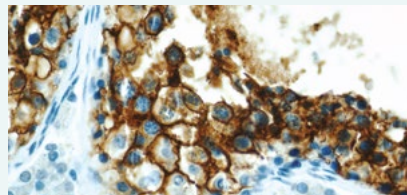
16 Publications

Stress granules (SGs) are protein-mRNA aggregates that are formed in response to environmental stress, resulting in translational inhibition. In many neurodegenerative diseases, the primary aggregating entities are RNA-binding proteins that are the core of nucleating factors for SGs, including TIA-1, TIAR, TTP and G3BP1.

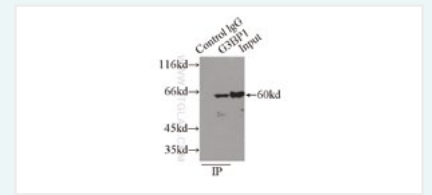
GAP SH3 binding protein 1 (G3BP1/ G3BP) works as an effector of SG assembly. SG biology plays an important role in the pathophysiology of TDP-43 in ALS and FTLD or AD. G3BP1 can be used as a great tool for SG studies.



Immunofluorescent analysis of Ethacrynic acid-treated HepG2 cells using G3BP1 antibody (13057-2-AP) at a dilution of 1:25 and Rhodamine-Goat anti-Rabbit IgG.



Immunohistochemistry of paraffin-embedded human testis slide using G3BP1 antibody (13057-2-AP) at a dilution of 1:50.



IP Result of anti-G3BP1 (IP: 13057-2-AP, 3ug; Detection: 13057-2-AP 1:1000) with HEK-293 cells lysate 2000ug.

Related Antibodies

Stress Granule Markers

| Antibody Name | Catalog Number | Type | Applications |
|---------------|----------------------|-------------|----------------------------|
| EIF3C | 12733-1-AP | Rabbit Poly | ELISA, WB |
| EIF3D | 7 10219-1-AP | Rabbit Poly | ELISA, IF, IHC, WB |
| EIF3E | 11352-1-AP | Rabbit Poly | ELISA, IF, IHC, WB |
| EIF3E | 10899-1-AP | Rabbit Poly | ELISA, IF, IHC, WB |
| EIF3H | 11310-1-AP | Rabbit Poly | ELISA, WB |
| EIF3I | 3 11287-1-AP | Rabbit Poly | ELISA, FC, IF, IHC, IP, WB |
| EIF3J | 1 10439-1-AP | Rabbit Poly | ELISA, IF, IHC, IP, WB |
| EIF4A2 | 11280-1-AP | Rabbit Poly | ELISA, IHC, IP, WB |
| EIF4B | 1 17917-1-AP | Rabbit Poly | ELISA, IP, WB |
| EIF4E | 3 11149-1-AP | Rabbit Poly | ELISA, FC, IF, IHC, WB |
| EIF4G | 3 15704-1-AP | Rabbit Poly | ELISA, IF, IHC, IP, WB |
| G3PB1 | 15 13057-2-AP | Rabbit Poly | ELISA, FC, IF, IHC, IP, WB |
| HuR | 10 11910-1-AP | Rabbit Poly | ELISA, FC, IF, IHC, IP, WB |
| PABP | 10970-1-AP | Rabbit Poly | ELISA, FC, IF, IHC, IP, WB |
| TIA1 | 5 12133-2-AP | Rabbit Poly | ELISA, IP, WB |

00 This number shows the amount of times our antibody has been cited in a publication.

C9orf72 As Repeat Expansion In Neurodegenerative Disease

Focus Antibody
C9orf72

Catalog Number
22637-1-AP

Type
Rabbit Polyclonal

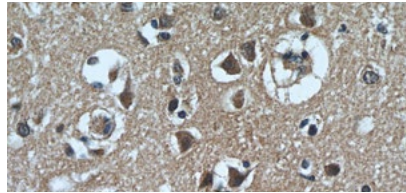
Applications
ELISA, IF, IHC, IP, WB

5 Publications

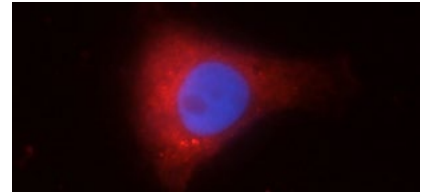
KD/KO Validated

ALS is characterized by a loss of motor neurons, with 90% of ALS cases being sporadic and the other 10% having a family history; the C9orf72 HRE represents the most common genetic cause of both familial and sporadic ALS. FTD is characterized by degeneration of the frontal and temporal lobes of the brain and is the second-most common type of dementia in people younger than 65. FTD is similar to ALS, in that C9orf72 HRE is one of the most common genetic issues. Some researchers claim that the C9orf72 HRE may also contribute to Alzheimer's and Huntington's diseases.

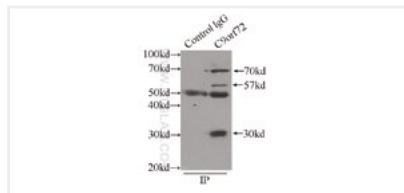
C9orf72 has a domain with polymorphic hexanucleotide repeat (GGGGCC). The C9orf72-hexanucleotide repeat expansions have been identified as genetic markers in ALS and FTD. The C9orf72 expansions may indicate ALS/FTD disorders. C9orf72 has two isoforms with MW 54–60 kDa and 25–30 kDa. Normal human C9orf72 alleles have 2 to 25 intronic GGGGCC repeats. The expanded repeats associated with ALS/FTD are thought to have variable lengths, ranging from ten to thousands of hexanucleotide repeats.



Immunohistochemical of paraffin-embedded human brain using C9orf72 antibody (22637-1-AP) at a dilution of 1:50 (40x objective).



Immunofluorescent analysis of SH-SY5Y cells using C9orf72 antibody (22637-1-AP) at a dilution of 1:25 and Rhodamine-Goat anti-Rabbit IgG.



IP Result of anti-C9orf72 (IP: 22637-1-AP, 3ug; Detection: 22637-1-AP 1:300) with SH-SY5Y cells lysate 2000ug.



SH-SY5Y cells were subjected to SDS PAGE followed by western blot with C9orf72 antibody (22637-1-AP) at a dilution of 1:300.

Related Antibodies

| Antibody Name | Catalog Number | Type | Applications |
|---------------|---------------------|-------------|------------------------|
| AP repeat | 2 24493-1-AP | Rabbit Poly | ELISA |
| C9orf72 | 25757-1-AP | Rabbit Poly | ELISA, IHC, WB |
| C9orf72 | 66140-1-Ig | Mouse Mono | ELISA, IF, IHC, IP, WB |
| GA repeat | 2 24492-1-AP | Rabbit Poly | ELISA |
| GP repeat | 4 24494-1-AP | Rabbit Poly | ELISA, IHC, WB |
| GR repeat | 6 23978-1-AP | Rabbit Poly | ELISA, WB |
| PR repeat | 5 23979-1-AP | Rabbit Poly | ELISA |

00 This number shows the amount of times our antibody has been cited in a publication.

NEURO-RELATED DISEASES ANTIBODY LIST


Alzheimer's Disease (AD)

Nowadays AD alone accounts for between and 60 and 70% of all dementia cases. It is a chronic disease that within a time destroys neurons and results in cognitive disabilities. AD mainly relates to senile plaques and neurofibrillary tangles (NFTs), where amyloid beta is a major component of these plaques.

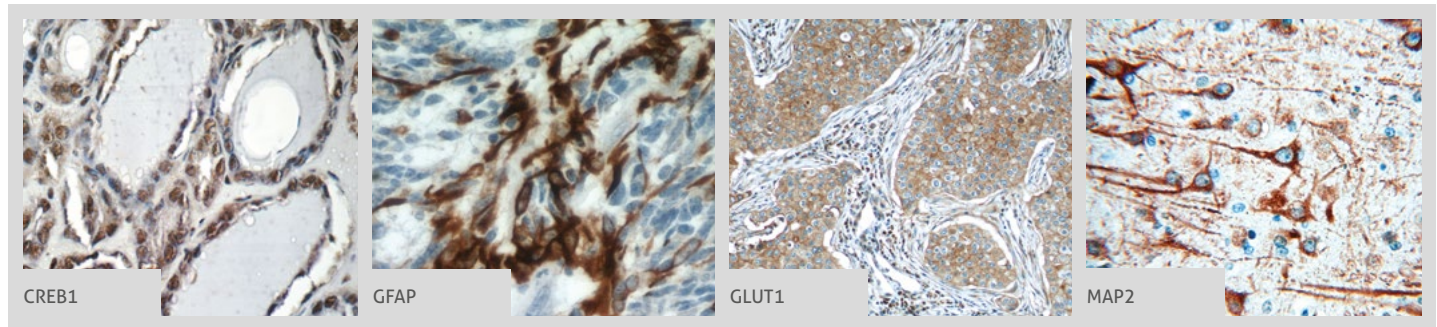
From a genetic perspective, four genes are deeply involved in AD: amyloid precursor protein (APP), presenilin 1 (PS1), presenilin2 (PS2), and apolipoprotein E (ApoE). Mutations in APP and PS proteins provoke an increase of amyloid-beta peptides, mostly the amyloidogenic form – amyloid-beta 42. The correlation between APOE and AD is significant; however, APOE genotyping is neither fully specific nor sensitive.

Related Antibodies

| Antibody Name | Cat. No. | Type | Applications |
|-------------------------------------|---------------------|-------------|----------------------------|
| 14-3-3 epsilon | 1 11648-2-AP | Rabbit Poly | ELISA, FC, IF, IHC, IP, WB |
| ADAM17 | 24620-1-AP | Rabbit Poly | ELISA, IHC, WB |
| ADAM17-Specific | 20259-1-AP | Rabbit Poly | ELISA, IHC, WB |
| Adenosine receptor 1 | 1 55026-1-AP | Rabbit Poly | ELISA, IHC, WB |
| Adenosine receptor 1 | 20332-1-AP | Rabbit Poly | ELISA, FC, IHC, WB |
| AIF | 7 17984-1-AP | Rabbit Poly | ELISA, IF, IHC, IP, WB |
| Amyloid beta (A4) precursor protein | 60342-1-Ig | Mouse Mono | ELISA, IHC, WB |
| AP repeat | 2 24493-1-AP | Rabbit Poly | ELISA |
| APH1A | 11643-1-AP | Rabbit Poly | ELISA, IP, WB |
| ATIC | 10726-1-AP | Rabbit Poly | ELISA, IF, WB |
| BACE1 | 2 12807-1-AP | Rabbit Poly | ELISA, IHC, IP, WB |
| BACE2 | 16321-1-AP | Rabbit Poly | ELISA, WB |
| Calbindin | 14479-1-AP | Rabbit Poly | ELISA, IHC, IP, WB |
| CALHM1 | 22042-1-AP | Rabbit Poly | ELISA, IHC, WB |

| Antibody Name | Cat. No. | Type | Applications |
|----------------|---|-------------|----------------------------|
| CCP1 | 5 14067-1-AP | Rabbit Poly | ELISA, IF, IHC, IP, WB |
| CCR5 | 1 17476-1-AP | Rabbit Poly | ELISA, FC, WB |
| CCT4 | 1 21524-1-AP | Rabbit Poly | ELISA, IHC, WB |
| CD33 | 1 17425-1-AP | Rabbit Poly | ELISA, FC, IF, IHC, WB |
| CDK1 | 1 10762-1-AP | Rabbit Poly | ELISA, WB |
| CDK1-Specific | 14 19532-1-AP | Rabbit Poly | ELISA, IF, IHC, WB |
| Clusterin | 1 12289-1-AP | Rabbit Poly | ELISA, IHC, IP, WB |
| Clusterin | 66109-1-Ig | Rabbit Poly | ELISA, IHC, WB |
| CREB1 |  4 12208-1-AP | Rabbit Poly | ELISA, FC, IF, IHC, IP, WB |
| EPHA1 | 65024-1-Ig | Mouse Mono | ELISA, IHC, WB |
| EPHA1-specific | 18698-1-AP | Rabbit Poly | ELISA, FC, IF, IHC, IP, WB |
| EPHA1-specific | 60155-2-Ig | Mouse Mono | ELISA, WB |
| ERK1/2 | 20 16443-1-AP | Rabbit Poly | ELISA, IF, IHC, WB |
| FABP7 | 1 51010-1-AP | Rabbit Poly | ELISA, IHC, WB |
| FABP7-Specific | 14836-1-AP | Rabbit Poly | ELISA, IHC, WB |

More validation images available on our website.

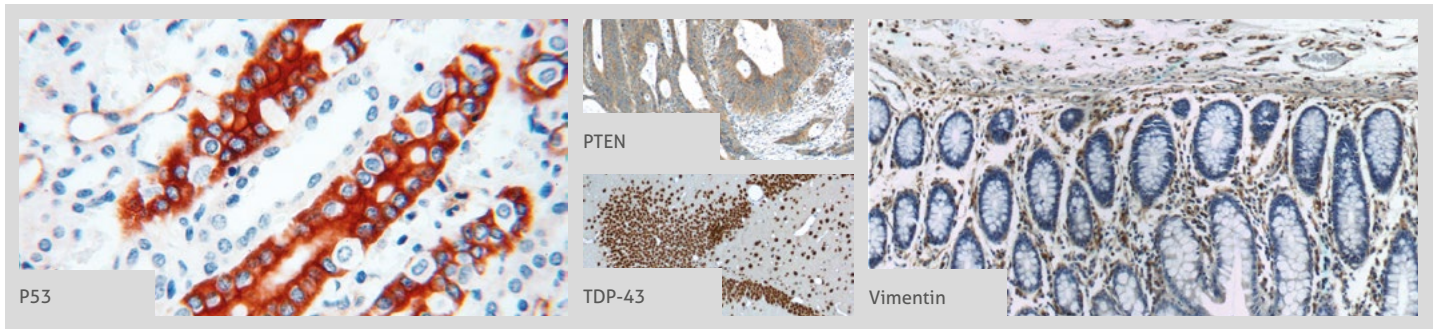


| Antibody Name | Cat. No. | Type | Applications |
|----------------------|----------------------|-------------|----------------------------|
| GA repeat | 2 24492-1-AP | Rabbit Poly | ELISA |
| GFAP | 20 16825-1-AP | Rabbit Poly | ELISA, IHC, WB |
| GFAP | 6 60190-1-Ig | Mouse Mono | ELISA, IHC, IP, WB |
| GFAP | 23935-1-AP | Rabbit Poly | ELISA, IHC, IP, WB |
| GLUT1 | 10 21829-1-AP | Rabbit Poly | ELISA, FC, IF, IHC, WB |
| GLUT1 | 66290-1-Ig | Mouse Mono | ELISA, FC, IHC, WB |
| GLUT3 | 5 20403-1-AP | Rabbit Poly | ELISA, IHC, WB |
| GLUT4 | 2 21048-1-AP | Rabbit Poly | ELISA, IHC |
| Glutamate receptor 2 | 2 11994-1-AP | Rabbit Poly | ELISA, FC, IP, WB |
| Glutamate receptor 2 | 2 11994-1-AP | Rabbit Poly | ELISA, FC, IP, WB |
| glutamine synthetase | 4 11037-2-AP | Rabbit Poly | ELISA, FC, IHC, WB |
| glutamine synthetase | 66323-1-Ig | Mouse Mono | ELISA, IHC, WB |
| GP repeat | 4 24494-1-AP | Rabbit Poly | ELISA, IHC, WB |
| GR repeat | 6 23978-1-AP | Rabbit Poly | ELISA, WB |
| GRP94 | 6 14700-1-AP | Rabbit Poly | ELISA, FC, IF, IHC, IP, WB |
| GRP94 | 60012-1-Ig | Mouse Mono | ELISA, FC, IF, WB |
| GSK3 A | 13419-1-AP | Rabbit Poly | ELISA, IHC, WB |
| GSK3 B | 25 22104-1-AP | Rabbit Poly | ELISA, IF, IHC, IP, WB |
| GSK3 B | 1 15113-1-AP | Rabbit Poly | ELISA, IHC, IP, WB |
| GSK3 B | 1 51065-1-AP | Rabbit Poly | ELISA, IF, IHC, IP, WB |
| GSK3 B | 24198-1-AP | Rabbit Poly | ELISA, FC, IF, IHC, IP, WB |
| GSK3A | 13419-1-AP | Rabbit Poly | ELISA, IHC, WB |
| GSK3B | 23 22104-1-AP | Rabbit Poly | ELISA, IF, IHC, IP, WB |
| GSK3B | 24198-1-AP | Rabbit Poly | ELISA, FC, IF, IHC, IP, WB |
| HIF1a | 22 20960-1-AP | Rabbit Poly | ELISA, FC, IF, IHC, WB |
| HSP90AB1 | 1 11405-1-AP | Rabbit Poly | ELISA, FC, IF, IHC, IP, WB |
| IDE | 2 21728-1-AP | Rabbit Poly | ELISA, IHC, IP, WB |
| IFNGR1 | 1 10808-1-AP | Rabbit Poly | ELISA, FC, IHC, IP, WB |

| Antibody Name | Cat. No. | Type | Applications |
|---------------------------|----------------------|-------------|------------------------|
| IFNGR2 | 10266-1-AP | Rabbit Poly | ELISA, FC, WB |
| Interferon gamma | 13 15365-1-AP | Rabbit Poly | ELISA, IHC, WB |
| JNK | 16 51151-1-AP | Rabbit Poly | ELISA, IF, IP, WB |
| JNK | 3 10023-1-AP | Rabbit Poly | ELISA, IF, IHC, IP, WB |
| JNK | 2 24164-1-AP | Rabbit Poly | ELISA, IF, IHC, IP, WB |
| MAP2 | 16 17490-1-AP | Rabbit Poly | ELISA, IF, IHC, IP, WB |
| MAP2 | 15 17490-1-AP | Rabbit Poly | ELISA, IF, IHC, IP, WB |
| MAPK7 | 1 10036-2-AP | Rabbit Poly | ELISA, WB |
| MAPK7 | 11164-1-AP | Rabbit Poly | ELISA, WB |
| MARK2 | 1 15492-1-AP | Rabbit Poly | ELISA, IHC, IP, WB |
| MARK3 | 12932-1-AP | Rabbit Poly | ELISA, IP, WB |
| MARK4 | 20174-1-AP | Rabbit Poly | ELISA, IHC, WB |
| MFN1 | 7 13798-1-AP | Rabbit Poly | ELISA, IHC, WB |
| MFN2 | 9 12186-1-AP | Rabbit Poly | ELISA, IHC, IP, WB |
| NALP3 | 8 19771-1-AP | Rabbit Poly | ELISA, IF, IHC, WB |
| N-CADHERIN | 23 13769-1-AP | Rabbit Poly | ELISA, IHC, WB |
| NFKB1 | 23576-1-AP | Rabbit Poly | ELISA, IF, IHC, WB |
| NFKB1, p105, p50-Specific | 15506-1-AP | Rabbit Poly | ELISA, WB |
| NF-κB | 12 14220-1-AP | Rabbit Poly | ELISA, IF, IP, WB |
| NGB | 13499-1-AP | Rabbit Poly | ELISA, IHC, WB |
| Nicastrin | 14071-1-AP | Rabbit Poly | ELISA, IF, WB |
| NMDAR2A | 2 19953-1-AP | Rabbit Poly | ELISA, FC, IF, WB |
| Notch1 | 5 10062-2-AP | Rabbit Poly | ELISA, IP, WB |
| NOTCH1 | 3 20687-1-AP | Rabbit Poly | ELISA, IHC, IP, WB |
| NR1H2 | 6 14278-1-AP | Rabbit Poly | ELISA, WB |
| NR1H2 | 60345-1-Ig | Mouse Mono | ELISA, WB |
| NR1H3 | 19 14351-1-AP | Rabbit Poly | ELISA, WB |
| NR1H3 | 60134-1-Ig | Mouse Mono | ELISA, IF, WB |

00 This number shows the amount of times our antibody has been cited in a publication.

More validation images available on our website.

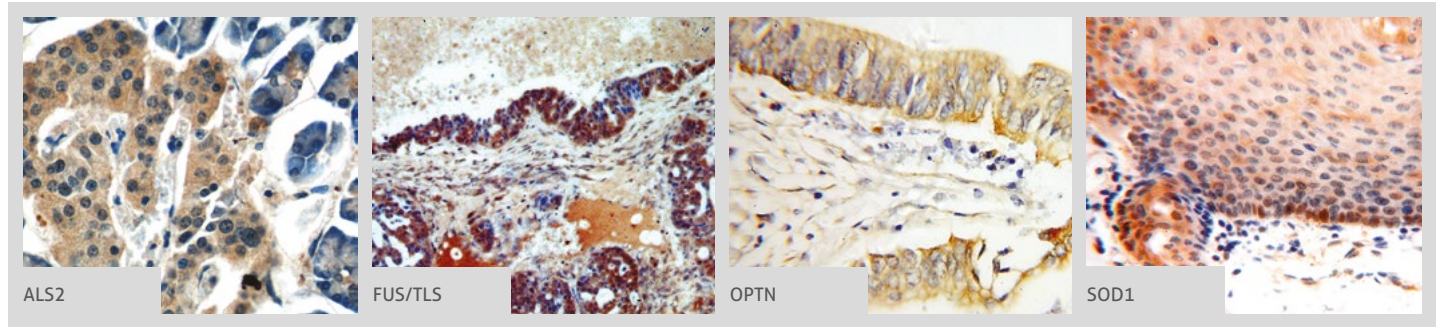


| Antibody Name | Cat. No. | Type | Applications |
|-----------------------------------|----------------------|-------------|----------------------------|
| NR2B | 2 19954-1-AP | Rabbit Poly | ELISA, FC, IF, WB |
| NR2B | 2 21920-1-AP | Rabbit Poly | ELISA, FC, IF, IHC, IP, WB |
| NRF1/nuclear respiratory factor 1 | 3 12482-1-AP | Rabbit Poly | ELISA, IP, WB |
| P53 | 62 10442-1-AP | Rabbit Poly | ELISA, IF, IHC, IP, WB |
| P53 | 60283-1-Ig | Mouse Mono | ELISA, IHC, IP, WB |
| p75NTR | 1 55014-1-AP | Rabbit Poly | ELISA, FC, IF, IHC, IP, WB |
| phospho (403/404)-TDP43 | 1 66079-1-Ig | Mouse Mono | ELISA, WB |
| phospho (409/410)-TDP43 | 4 22309-1-AP | Rabbit Poly | ELISA, WB |
| phospho (409/410)-TDP43 | 66318-1-Ig | Mouse Mono | ELISA, WB |
| PPAR gamma | 22 16643-1-AP | Rabbit Poly | ELISA, IF, IHC, IP, WB |
| PPAR gamma | 60127-1-Ig | Mouse Mono | ELISA, IHC, WB |
| PPARA | 12 15540-1-AP | Rabbit Poly | ELISA, IHC, IP, WB |
| PPP2CA | 3 13482-1-AP | Rabbit Poly | ELISA, IHC, IP, WB |
| PR repeat | 5 23979-1-AP | Rabbit Poly | ELISA |
| Presenilin -1-Specific | 1 16163-1-AP | Rabbit Poly | ELISA, IP, WB |
| PSD95 | 2 20665-1-AP | Rabbit Poly | ELISA, IHC, IP, WB |
| PSEN1 | 20434-1-AP | Rabbit Poly | ELISA, IF |
| PTEN | 9 22034-1-AP | Rabbit Poly | ELISA, IF, IHC, WB |
| PTEN | 5 60300-1-Ig | Mouse Mono | ELISA, IF, IHC, WB |
| PTP1B | 1 11334-1-AP | Rabbit Poly | ELISA, IF, IHC, IP, WB |
| S100B | 3 15146-1-AP | Rabbit Poly | ELISA, IF, IHC, WB |
| SAP18 | 13841-1-AP | Rabbit Poly | ELISA, IF, IHC, IP, WB |
| SET | 3 55201-1-AP | Rabbit Poly | ELISA, IHC, WB |
| SFPQ | 2 15585-1-AP | Rabbit Poly | ELISA, IF, IHC, WB |
| SIRP BETA 1 | 2 11811-1-AP | Rabbit Poly | ELISA, IHC, WB |
| SIRT1 | 19 13161-1-AP | Rabbit Poly | ELISA, IF, IHC, IP, WB |
| SIRT1 | 60303-1-Ig | Mouse Mono | ELISA, IF, IHC, IP, WB |

| Antibody Name | Cat. No. | Type | Applications |
|-------------------------|-----------------------|-------------|----------------------------|
| SNAP25 | 14903-1-AP | Rabbit Poly | ELISA, IF, IP, WB |
| SNAP25 | 60159-1-Ig | Mouse Mono | ELISA, IF, IP, WB |
| SSBP1 | 2 12212-1-AP | Rabbit Poly | ELISA, WB |
| STXBP3 | 1 13764-1-AP | Rabbit Poly | ELISA, IHC, IP, WB |
| SYNCRIP | 14024-1-AP | Rabbit Poly | ELISA, IP, WB |
| TAU | 2 10274-1-AP | Rabbit Poly | ELISA, IHC, WB |
| TDP-43 | 757 10782-2-AP | Rabbit Poly | ELISA, FC, IF, IHC, IP, WB |
| TDP-43 (C-terminal) | 48 12892-1-AP | Rabbit Poly | ELISA, IF, IHC, IP, WB |
| TDP-43 (full length) | 18280-1-AP | Rabbit Poly | ELISA, FC, IF, IHC, IP, WB |
| TDP-43 (human specific) | 35 60019-2-Ig | Mouse Mono | ELISA, FC, IHC, IP, WB |
| TFAM | 7 19998-1-AP | Rabbit Poly | ELISA, IHC, WB |
| TFAM | 22586-1-AP | Rabbit Poly | ELISA, IHC, IP, WB |
| TGF-beta 1 | 21 18978-1-AP | Rabbit Poly | ELISA, IHC, WB |
| TLR4 | 13 19811-1-AP | Rabbit Poly | ELISA, IHC, WB |
| TLR4 | 66350-1-Ig | Mouse Mono | ELISA, IHC, WB |
| TNF alpha | 9 60291-1-Ig | Mouse Mono | ELISA, IHC, WB |
| TNF-alpha | 10 17590-1-AP | Rabbit Poly | ELISA, IHC |
| VAMP2 | 1 10135-1-AP | Rabbit Poly | ELISA, IHC, WB |
| VGLUT1 | 55491-1-AP | Rabbit Poly | ELISA, FC, IHC |
| VGLUT2 | 25261-1-AP | Rabbit Poly | ELISA, WB |
| Vimentin | 65 10366-1-AP | Rabbit Poly | ELISA, FC, IF, IHC, WB |
| Vimentin | 2 60330-1-Ig | Mouse Mono | ELISA, IF, IHC, WB |
| Vimentin | 22031-1-AP | Rabbit Poly | ELISA, WB |
| Visfatin | 1 11776-1-AP | Rabbit Poly | ELISA, IHC, IP, WB |

00 This number shows the amount of times our antibody has been cited in a publication.

More validation images available on our website.



Amyotrophic Lateral Sclerosis (ALS)

ALS (also known as Lou Gehrig's disease) is a common adult-onset neuropathological, genetic disorder. Hand and leg weakness, loss of ability to initiate/control movements, and also slurred speech are typical symptoms of ALS. ALS is mostly related to the loss of motor neurons in the brain and spinal cord, and also atrophy of the frontal and temporal lobes. Pathogenic mutations are present in TAR DNA-binding protein 43 (TARDBP/TDP-43), fused in sarcoma (FUS), ubiquilin2 (UBQLN2), SOD1, and also in the non-coding region of C9orf72. Recently, ALS and Frontotemporal Dementia (FTD) have been classified as belonging to the same family spectrum diseases.

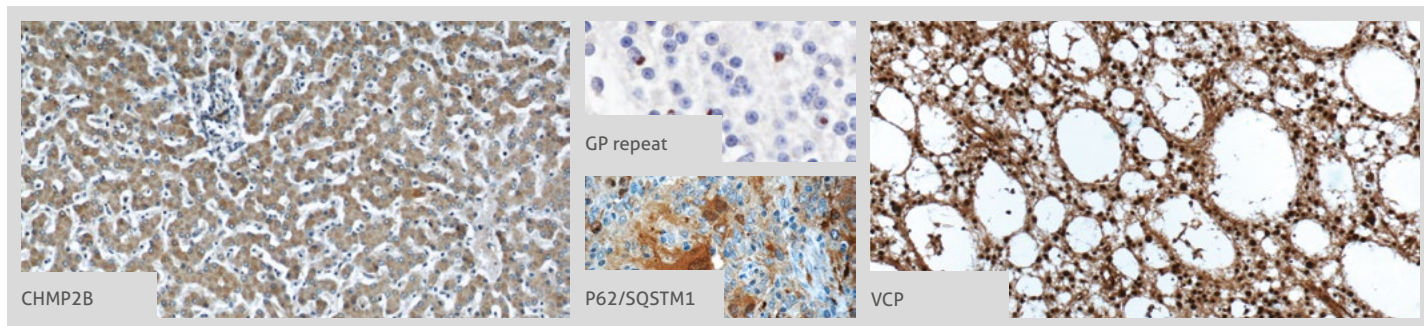
Related Antibodies

| Antibody Name | Cat. No. | Type | Applications |
|---------------|------------|-------------|----------------------------|
| ALS2 | 13998-1-AP | Rabbit Poly | ELISA, IF, IHC, IP, WB |
| Angiogenin | 18302-1-AP | Rabbit Poly | ELISA, IHC, WB |
| AP repeat | 24493-1-AP | Rabbit Poly | ELISA |
| Ataxin 2 | 21776-1-AP | Rabbit Poly | ELISA, IF, IHC, IP, WB |
| C9orf72 | 22637-1-AP | Rabbit Poly | ELISA, IF, IHC, IP, WB |
| FUS/TLS | 11570-1-AP | Rabbit Poly | ELISA, FC, IF, IHC, IP, WB |
| FUS/TLS | 60160-1-Ig | Mouse Mono | ELISA, IF, IHC, IP, WB |
| GA repeat | 24492-1-AP | Rabbit Poly | ELISA |
| GFAP | 16825-1-AP | Rabbit Poly | ELISA, IHC, WB |
| GFAP | 60190-1-Ig | Mouse Mono | ELISA, IHC, IP, WB |
| GFAP | 23935-1-AP | Rabbit Poly | ELISA, IHC, IP, WB |
| GP repeat | 24494-1-AP | Rabbit Poly | ELISA, IHC, WB |
| GR repeat | 23978-1-AP | Rabbit Poly | ELISA, WB |
| OPTN | 10837-1-AP | Rabbit Poly | ELISA, FC, IF, IHC, IP, WB |
| OPTN | 60293-1-Ig | Mouse Mono | ELISA, WB |
| p150 glued | 55182-1-AP | Rabbit Poly | ELISA, IF, IHC, WB |
| P62/SQSTM1 | 18420-1-AP | Rabbit Poly | ELISA, FC, IF, IHC, IP, WB |
| P62/SQSTM1 | 55274-1-AP | Rabbit Poly | ELISA, IF, IHC, WB |
| P62/SQSTM1 | 66184-1-Ig | Mouse Mono | ELISA, IF, IHC, WB |

| Antibody Name | Cat. No. | Type | Applications |
|---------------|------------|-------------|----------------------------|
| PR repeat | 23979-1-AP | Rabbit Poly | ELISA |
| Profilin 1 | 11680-1-AP | Rabbit Poly | ELISA, IHC, WB |
| PTEN | 22034-1-AP | Rabbit Poly | ELISA, IF, IHC, WB |
| PTEN | 60300-1-Ig | Mouse Mono | ELISA, IF, IHC, WB |
| S100B | 15146-1-AP | Rabbit Poly | ELISA, IF, IHC, WB |
| SOD1 | 10269-1-AP | Rabbit Poly | ELISA, IF, IHC, IP, WB |
| VAPB | 14477-1-AP | Rabbit Poly | ELISA, FC, IF, IHC, IP, WB |
| VAPB | 66191-1-Ig | Mouse Mono | ELISA, IF, IHC, WB |
| VCP | 10736-1-AP | Rabbit Poly | ELISA, IF, IHC, IP, WB |
| VCP | 60316-1-Ig | Mouse Mono | ELISA, IF, IHC, WB |
| VGLUT1 | 55491-1-AP | Rabbit Poly | ELISA, FC, IHC |
| VGLUT2 | 25261-1-AP | Rabbit Poly | ELISA, WB |

00 This number shows the amount of times our antibody has been cited in a publication.

More validation images available on our website.



Frontotemporal Dementia (FTD)

FTD is a disease caused by progressive nerve cell loss. The majority of cases have brain atrophy in the frontal and/or temporal lobes. FTD is known as young-onset dementia and is characterized by behavioral abnormalities including decline in cognitive, motor, and language function. Most common FTD mutations are related to the TARDBP/TDP-43 protein, TAU pathology, or the fused in sarcoma (FUS) gene.

Related Antibodies

| Antibody Name | Cat. No. | Type | Applications |
|---------------|----------------------|-------------|----------------------------|
| AP repeat | 2 24493-1-AP | Rabbit Poly | ELISA |
| C9orf72 | 5 22637-1-AP | Rabbit Poly | ELISA, IF, IHC, IP, WB |
| C9orf72 | 25757-1-AP | Rabbit Poly | ELISA, IHC, WB |
| C9orf72 | 66140-1-Ig | Mouse Mono | ELISA, IF, IHC, IP, WB |
| CHMP2B | 2 12527-1-AP | Rabbit Poly | ELISA, IF, IHC, WB |
| FUS/TLS | 28 11570-1-AP | Rabbit Poly | ELISA, FC, IF, IHC, IP, WB |
| FUS/TLS | 6 60160-1-Ig | Mouse Mono | ELISA, IF, IHC, IP, WB |
| GA repeat | 2 24492-1-AP | Rabbit Poly | ELISA |
| GP repeat | 4 24494-1-AP | Rabbit Poly | ELISA, IHC, WB |
| GR repeat | 6 23978-1-AP | Rabbit Poly | ELISA, WB |
| Granulin | 5 18410-1-AP | Rabbit Poly | ELISA, IHC, IP, WB |
| Granulin | 1 10053-1-AP | Rabbit Poly | ELISA, IHC, WB |
| GRN1/G | 25823-1-AP | Rabbit Poly | ELISA, WB |
| P62/SQSTM1 | 51 18420-1-AP | Rabbit Poly | ELISA, FC, IF, IHC, IP, WB |
| P62/SQSTM1 | 55274-1-AP | Rabbit Poly | ELISA, IF, IHC, WB |
| P62/SQSTM1 | 2 66184-1-Ig | Mouse Mono | ELISA, IF, IHC, WB |

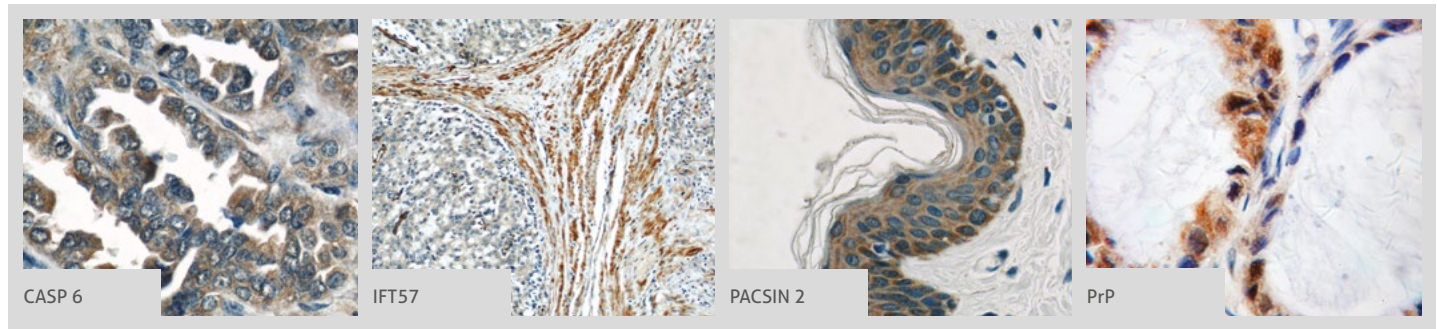
| Antibody Name | Cat. No. | Type | Applications |
|-------------------------|-----------------------|-------------|----------------------------|
| phospho (403/404)-TDP43 | 1 66079-1-Ig | Mouse Mono | ELISA, WB |
| phospho (409/410)-TDP43 | 4 22309-1-AP | Rabbit Poly | ELISA, WB |
| phospho (409/410)-TDP43 | 66318-1-Ig | Mouse Mono | ELISA, WB |
| PR repeat | 5 23979-1-AP | Rabbit Poly | ELISA |
| TAU | 2 10274-1-AP | Rabbit Poly | ELISA, IHC, WB |
| TDP-43 | 757 10782-2-AP | Rabbit Poly | ELISA, FC, IF, IHC, IP, WB |
| TDP-43 (C-terminal) | 48 12892-1-AP | Rabbit Poly | ELISA, IF, IHC, IP, WB |
| TDP-43 (full length) | 18280-1-AP | Rabbit Poly | ELISA, FC, IF, IHC, IP, WB |
| TDP-43 (human specific) | 35 60019-2-Ig | Mouse Mono | ELISA, FC, IHC, IP, WB |
| TMEM106B | 2 20995-1-AP | Rabbit Poly | ELISA, IF, IHC, IP, WB |
| TMEM106B | 60333-1-Ig | Mouse Mono | ELISA, WB |
| Transportin-1 | 20679-1-AP | Rabbit Poly | ELISA, WB |
| VCP | 2 10736-1-AP | Rabbit Poly | ELISA, IF, IHC, IP, WB |
| VCP | 60316-1-Ig | Mouse Mono | ELISA, IF, IHC, WB |

00 This number shows the amount of times our antibody has been cited in a publication.

ANTIBODIES VALIDATED WITH **siRNA-KNOCKDOWN** TO DEMONSTRATE SPECIFICITY.



More validation images available on our website.



Huntington's Disease (HD)

HD is a genetic autosomal dominant neurodegenerative disorder caused by the expansion of a CAG repeat located within the huntingtin gene (HTT). HTT mutation causes abnormal protein interactions or aggregation of various proteins, leading to neurodegeneration. For example, transcription factors TBP and SIN3A form complexes with the mutated huntingtin gene that suppress gene transcription.

Patients who suffer HD display irregular, involuntary movements (Chorea), short-term memory loss, and changes in their behavior, which eventually progress to dementia. Initial symptoms can appear relatively early, between the ages of 35 and 45.

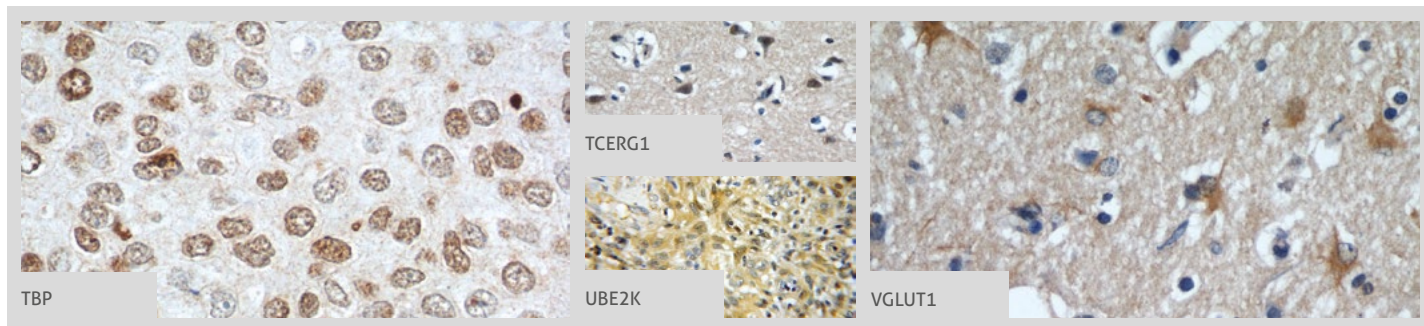
Related Antibodies

| Antibody Name | Cat. No. | Type | Applications |
|-----------------------|----------------------|-------------|------------------------|
| Adenosine receptor 1 | 1 55026-1-AP | Rabbit Poly | ELISA, IHC, WB |
| Adenosine receptor 1 | 20332-1-AP | Rabbit Poly | ELISA, FC, IHC, WB |
| BDNF | 66292-1-Ig | Mouse Mono | ELISA, IF, WB |
| BDNF | 5 25699-1-AP | Rabbit Poly | ELISA, IF, IHC, WB |
| CASP 6 | 1 10198-1-AP | Rabbit Poly | ELISA, IHC, WB |
| dopa beta hydroxylase | 10777-1-AP | Rabbit Poly | ELISA, IF, IHC, WB |
| dopa decarboxylase | 2 10166-1-AP | Rabbit Poly | ELISA, IHC, IP, WB |
| DRD1 | 2 17934-1-AP | Rabbit Poly | ELISA, WB |
| DRD2 | 1 55084-1-AP | Rabbit Poly | ELISA, IP, WB |
| DRD2 | 1 55084-1-AP | Rabbit Poly | ELISA, IHC, IP, WB |
| DRD5 | 3 20310-1-AP | Rabbit Poly | ELISA, FC, WB |
| EIF2AK2, PKR | 1 18244-1-AP | Rabbit Poly | ELISA, IF, IHC, IP, WB |
| GRIK2 | 13597-1-AP | Rabbit Poly | ELISA, FC, WB |
| HIP1 | 22231-1-AP | Rabbit Poly | ELISA, IHC, IP, WB |
| HIP14; ZDHHC17 | 15465-1-AP | Rabbit Poly | ELISA, IHC, WB |
| HIP1R | 16814-1-AP | Rabbit Poly | ELISA, IHC, IP, WB |
| HIP1-Specific | 19688-1-AP | Rabbit Poly | ELISA, IHC, IP, WB |
| HSP27 | 10 18284-1-AP | Rabbit Poly | ELISA, IF, WB |

| Antibody Name | Cat. No. | Type | Applications |
|----------------|----------------------|-------------|----------------------------|
| HSPB2 | 21755-1-AP | Rabbit Poly | ELISA, IF, IHC, WB |
| IFT57 | 10 11083-1-AP | Rabbit Poly | ELISA, IHC, IP, WB |
| IGF1A-Specific | 6 20214-1-AP | Rabbit Poly | ELISA, IF, IHC, IP, WB |
| IGF1B-Specific | 20215-1-AP | Rabbit Poly | ELISA, IHC, WB |
| ITPR1-specific | 19962-1-AP | Rabbit Poly | ELISA, FC, IHC, WB |
| KALRN | 19740-1-AP | Rabbit Poly | ELISA, WB |
| NMDAR2A | 2 19953-1-AP | Rabbit Poly | ELISA, FC, IF, WB |
| NR2B | 2 19954-1-AP | Rabbit Poly | ELISA, FC, IF, WB |
| NR2B | 2 21920-1-AP | Rabbit Poly | ELISA, FC, IF, IHC, IP, WB |
| OPTN | 8 10837-1-AP | Rabbit Poly | ELISA, FC, IF, IHC, IP, WB |
| OPTN | 60293-1-Ig | Mouse Mono | ELISA, WB |
| OPTN | Biotin-60293 | Mouse Mono | ELISA, WB |
| PACSIN1 | 13219-1-AP | Rabbit Poly | ELISA, IF, WB |
| PACSIN2 | 2 10518-2-AP | Rabbit Poly | ELISA, IF, IHC, IP, WB |
| PACSIN3 | 10639-1-AP | Rabbit Poly | ELISA, FC, IF, IHC, WB |
| PAK1 | 21401-1-AP | Rabbit Poly | ELISA, IF, IHC, IP, WB |
| PAK1 | 51137-1-AP | Rabbit Poly | ELISA, IF, IHC, WB |
| PrP | 12555-1-AP | Rabbit Poly | ELISA, FC, IHC, IP, WB |
| PRPF40A | 17392-1-AP | Rabbit Poly | ELISA, IP, WB |

00 This number shows the amount of times our antibody has been cited in a publication.

More validation images available on our website.



| Antibody Name | Cat. No. | Type | Applications |
|---------------|---------------------|-------------|------------------------|
| PRPF40B | 16929-1-AP | Rabbit Poly | ELISA, IF, IP, WB |
| RNF2 | 1 16031-1-AP | Rabbit Poly | ELISA, IP, WB |
| SIAH1 | 13886-1-AP | Rabbit Poly | ELISA, WB |
| TBP | 8 22006-1-AP | Rabbit Poly | ELISA, IP, WB |
| TBP | 1 66166-1-Ig | Mouse Mono | ELISA, IF, IHC, IP, WB |
| TBP | 22246-1-AP | Rabbit Poly | ELISA, IF, WB |

| Antibody Name | Cat. No. | Type | Applications |
|---------------|---------------------|-------------|--------------------|
| TCERG1 | 1 21858-1-AP | Rabbit Poly | ELISA, IHC, WB |
| TrkB | 13129-1-AP | Rabbit Poly | ELISA, IHC, IP, WB |
| UBE2K | 1 11834-3-AP | Rabbit Poly | ELISA, IHC, WB |
| VGLUT1 | 1 55491-1-AP | Rabbit Poly | ELISA, FC, IHC |
| VGLUT2 | 25261-1-AP | Rabbit Poly | ELISA, WB |

00 This number shows the amount of times our antibody has been cited in a publication.

Parkinson's Disease (PD)

PD is estimated to affect about 2% of all individuals over 65 years. Resting tremor, cognitive impairment, and neurobehavioral disorders such as depression and anxiety are the main features of the disease.

α -Synuclein, a presynaptic neuronal protein, is central to the Lewy body pathology of PD. The cardinal motor symptoms are linked to the death of dopaminergic neurons in the substantia nigra, which is a primary reason for PD. Cell loss in the substantia nigra affects the ventral component of the pars compacta. This aspect is reflected in up to 70% cell death at the end stage of the disease when compared with a healthy individual. Also, mitochondrial dysfunction and reactive oxygen species (ROS) are involved in the accumulation of misfolded proteins, which negatively influence dopaminergic neurons.

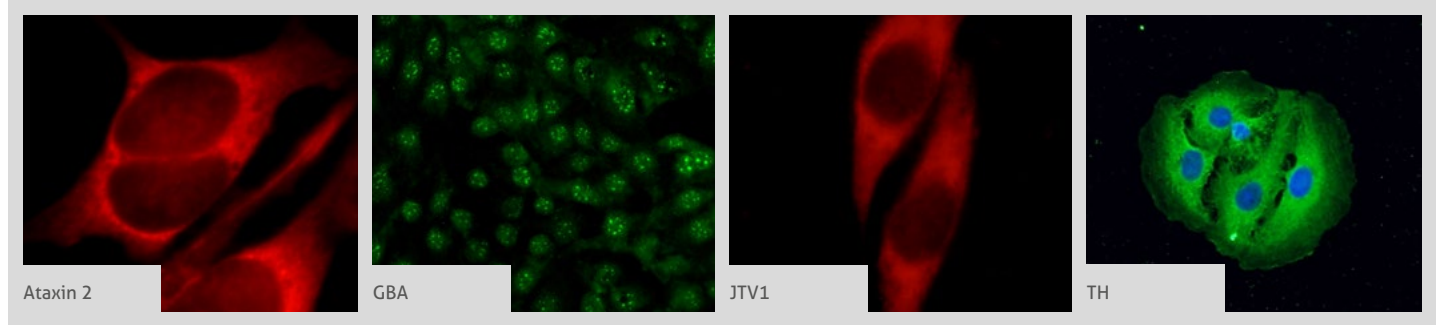
Related Antibodies

| Antibody Name | Cat. No. | Type | Applications |
|----------------------------|---------------------|-------------|------------------------|
| acetylated Tubulin (Lys40) | 2 66200-1-Ig | Mouse Mono | ELISA, IF, IHC, WB |
| alpha Tubulin | 1 14555-1-AP | Rabbit Poly | ELISA, IF, IHC, WB |
| alpha-synuclein | 5 10842-1-AP | Rabbit Poly | ELISA, IF, IHC, WB |
| Ataxin 2 | 2 21776-1-AP | Rabbit Poly | ELISA, IF, IHC, IP, WB |
| CPLX1 | 3 10246-2-AP | Rabbit Poly | ELISA, IF, IHC, IP, WB |
| dopa beta hydroxylase | 10777-1-AP | Rabbit Poly | ELISA, IF, IHC, WB |
| dopa decarboxylase | 2 10166-1-AP | Rabbit Poly | ELISA, IHC, IP, WB |

| Antibody Name | Cat. No. | Type | Applications |
|---------------|---------------------|-------------|------------------------|
| DRD1 | 2 17934-1-AP | Rabbit Poly | ELISA, WB |
| DRD2 | 1 55084-1-AP | Rabbit Poly | ELISA, IHC, IP, WB |
| DRD5 | 3 20310-1-AP | Rabbit Poly | ELISA, FC, WB |
| EIF4G1 | 3 15704-1-AP | Rabbit Poly | ELISA, IF, IHC, IP, WB |
| FBXO7 | 1 10696-1-AP | Rabbit Poly | ELISA, IHC, IP, WB |
| GAK | 12147-1-AP | Rabbit Poly | ELISA, WB |
| GATA1 | 2 60011-1-Ig | Mouse Mono | ELISA, WB |
| GATA2 | 2 11103-1-AP | Rabbit Poly | ELISA, IF, IHC, WB |

00 This number shows the amount of times our antibody has been cited in a publication.

More validation images available on our website.

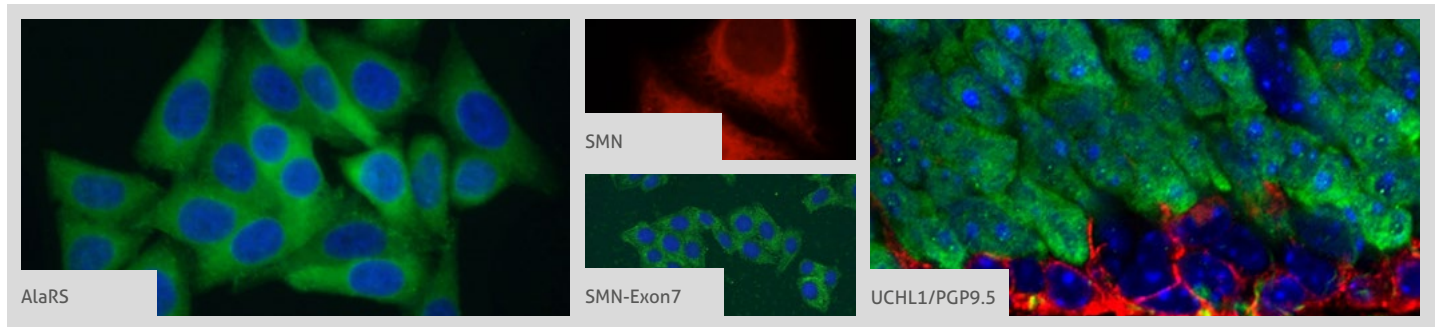


| Antibody Name | Cat. No. | Type | Applications |
|----------------------|----------------------|-------------|------------------------|
| GBA | 20622-1-AP | Rabbit Poly | ELISA, IF, IHC |
| GFAP | 20 16825-1-AP | Rabbit Poly | ELISA, IHC, WB |
| GFAP | 6 60190-1-Ig | Mouse Mono | ELISA, IHC, IP, WB |
| GFAP | 23935-1-AP | Rabbit Poly | ELISA, IHC, IP, WB |
| GNAS | 1 10150-2-AP | Rabbit Poly | ELISA, IHC, IP, WB |
| GPNMB | 1 20338-1-AP | Rabbit Poly | ELISA, IHC, WB |
| GPR37/Pael-R | 2 14820-1-AP | Rabbit Poly | ELISA, WB |
| HIP1R | 16814-1-AP | Rabbit Poly | ELISA, IHC, IP, WB |
| HLA-DRA | 17221-1-AP | Rabbit Poly | ELISA, IHC, WB |
| HLA-DRB5 | 21702-1-AP | Rabbit Poly | ELISA, IHC, WB |
| HTRA2 | 2 15775-1-AP | Rabbit Poly | ELISA, IHC, IP, WB |
| JTV1 | 9 10424-1-AP | Rabbit Poly | ELISA, IF, IHC, IP, WB |
| LAMP3 | 2 12632-1-AP | Rabbit Poly | ELISA, IHC, IP, WB |
| MCCC1 | 14861-1-AP | Rabbit Poly | ELISA, IHC, IP, WB |
| Myelin basic protein | 10458-1-AP | Rabbit Poly | ELISA, IHC, WB |
| NDUFV1 | 4 11238-1-AP | Rabbit Poly | ELISA, IHC, IP, WB |
| NESP55, GNAS | 66253-1-Ig | Mouse Mono | ELISA, WB |
| Nurr1/NR4A2 | 2 10975-2-AP | Rabbit Poly | ELISA, IHC |
| PARK2 | 1 14060-1-AP | Rabbit Poly | ELISA, IF, WB |
| PARK7, DJ-1 | 3 11681-1-AP | Rabbit Poly | ELISA, IF, IHC, IP, WB |
| PINK1 | 1 23274-1-AP | Rabbit Poly | ELISA, IHC, WB |
| PTEN | 9 22034-1-AP | Rabbit Poly | ELISA, IF, IHC, WB |
| PTEN | 5 60300-1-Ig | Mouse Mono | ELISA, IF, IHC, WB |
| RKIP | 1 10575-1-AP | Rabbit Poly | ELISA, IHC, WB |
| SNCB | 10498-1-AP | Rabbit Poly | ELISA, FC, IF, IHC, WB |
| SPR | 16822-1-AP | Rabbit Poly | ELISA, IF, IP, WB |
| SREBF1 | 12 14088-1-AP | Rabbit Poly | ELISA, IF, IP, WB |
| STBD1 | 3 11842-1-AP | Rabbit Poly | ELISA, IP, WB |

| Antibody Name | Cat. No. | Type | Applications |
|------------------|----------------------|-------------|----------------------------|
| STMN2 | 8 10586-1-AP | Rabbit Poly | ELISA, IF, IHC, IP, WB |
| Synaptotagmin-11 | 12031-1-AP | Rabbit Poly | ELISA, WB |
| TAU | 2 10274-1-AP | Rabbit Poly | ELISA, IHC, WB |
| TFAM | 7 19998-1-AP | Rabbit Poly | ELISA, IHC, WB |
| TFAM | 23996-1-AP | Rabbit Poly | ELISA, IF, IHC, IP, WB |
| TH | 25859-1-AP | Rabbit Poly | ELISA, IF, IHC, IP, WB |
| TH | 66334-1-Ig | Mouse Mono | ELISA, IF, IHC, WB |
| TOM 5 | 25607-1-AP | Rabbit Poly | ELISA, WB |
| TOM 6 | 16689-1-AP | Rabbit Poly | ELISA, WB |
| TOM 7 | 15071-1-AP | Rabbit Poly | ELISA, IHC, WB |
| TOM20 | 22 11802-1-AP | Rabbit Poly | ELISA, FC, IF, IHC, IP, WB |
| TOM22 | 1 11278-1-AP | Rabbit Poly | ELISA, IHC, WB |
| TOM40 | 2 18409-1-AP | Rabbit Poly | ELISA, FC, IF, IHC, IP, WB |
| TOM70 | 10 14528-1-AP | Rabbit Poly | ELISA, FC, IF, IHC, IP, WB |
| UCHL1 | 66230-1-Ig | Mouse Mono | ELISA, IF, IHC, WB |
| UCHL1/PGP9.5 | 3 14730-1-AP | Rabbit Poly | ELISA, IF, IP, WB |
| VCP | 2 10736-1-AP | Rabbit Poly | ELISA, IF, IHC, IP, WB |
| VCP | 60316-1-Ig | Mouse Mono | ELISA, IF, IHC, WB |
| VGLUT1 | 55491-1-AP | Rabbit Poly | ELISA, FC, IHC |
| VGLUT2 | 25261-1-AP | Rabbit Poly | ELISA, WB |
| VMAT2 | 1 20873-1-AP | Rabbit Poly | ELISA, WB |
| VPS35 | 2 10236-1-AP | Rabbit Poly | ELISA, IF, IP, WB |
| ZNF746 | 24543-1-AP | Rabbit Poly | ELISA, IHC, WB |

00 This number shows the amount of times our antibody has been cited in a publication.

More validation images available on our website.



Spinal Muscular Atrophy (SMA)

SMA is one of the most frequent autosomal recessive genetic disorders in childhood. It affects muscle movement through the loss of motor neuron function in the spinal cord and brainstem. The main reason for this is a deletion or mutation in the SMN1 gene. This leads to lower levels of functional SMN protein. The SMN1 protein plays a crucial role in the maintenance of motor neurons and further nerve impulses that flow between the brain and muscles. As a consequence, SMA patients suffer progressive paralysis, leading to weakness and impaired movement.

Related Antibodies

| Antibody Name | Cat. No. | Type | Applications |
|---------------|------------|-------------|------------------------|
| AlaRS | 17394-1-AP | Rabbit Poly | ELISA, IF, IHC, IP, WB |
| GARS | 15831-1-AP | Rabbit Poly | ELISA, IF, IHC, IP, WB |
| GTF2H2 | 16005-1-AP | Rabbit Poly | ELISA, WB |
| PFN2 | 60094-2-Ig | Mouse Mono | ELISA, IHC, WB |
| Sam68 | 10222-1-AP | Rabbit Poly | ELISA, FC, IHC, IP, WB |
| SIP1 | 21672-1-AP | Rabbit Poly | ELISA, IP, WB |
| SMN | 11708-1-AP | Rabbit Poly | ELISA, IF, IHC, IP, WB |
| SMN | 20451-1-AP | Rabbit Poly | ELISA, IF, IHC, IP, WB |

| Antibody Name | Cat. No. | Type | Applications |
|-------------------------|------------|-------------|------------------------|
| SMN | 22329-1-AP | Rabbit Poly | ELISA, IF, WB |
| SMN (Human, Mouse, Rat) | 60154-2-Ig | Mouse Mono | ELISA, WB |
| SMN (Human-Specific) | 60154-1-Ig | Mouse Mono | ELISA, IF, IHC, IP, WB |
| SMN-Exon7 | 60255-1-Ig | Mouse Mono | ELISA, IF, WB |
| SYNCRIP | 14024-1-AP | Rabbit Poly | ELISA, IP, WB |
| UBE1 | 15912-1-AP | Rabbit Poly | ELISA, IHC, WB |
| UCHL1/PGP9.5 | 14730-1-AP | Rabbit Poly | ELISA, IF, IHC, IP, WB |

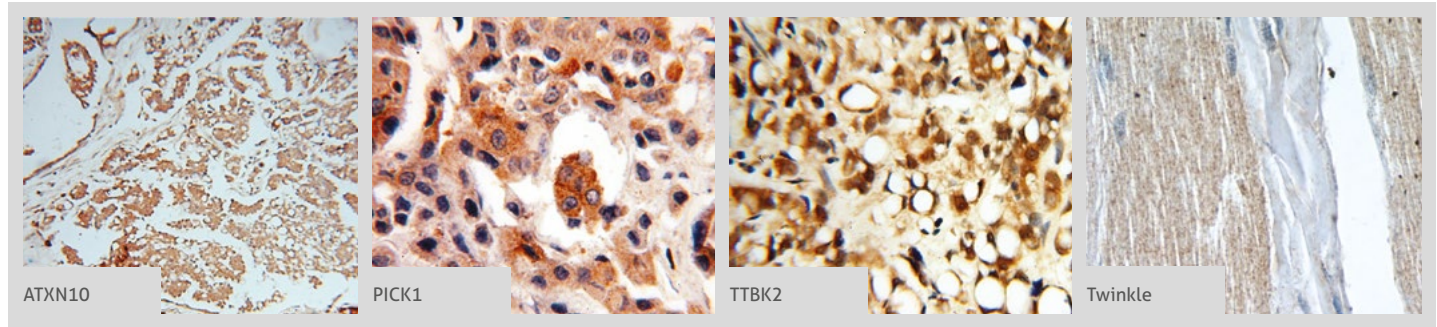
00 This number shows the amount of times our antibody has been cited in a publication.

FROM OUR BENCH TO YOUR BENCH™

Proteintech products now feature in over 20,000 publications worldwide.



More validation images available on our website.



Spinocerebellar Ataxia (SCA)

SCA is a progressive neuro disorder where the cerebellum slowly degenerates. Degenerative changes are also observed in the brainstem.

Almost 30 genetic causes of SCA have been discovered. Six SCAs, including the more prevalent SCA1, SCA2, SCA3, and SCA6, along with SCA7 and SCA17, are caused by the expansion of a CAG repeat that encodes a polyglutamine tract in the affected protein. Typical symptoms include loss of body movement control, eye movement abnormalities, and less frequent retinal degeneration.

Related Antibodies

| Antibody Name | Cat. No. | Type | Applications |
|----------------|---------------------|-------------|------------------------|
| A2BP1 | 22647-1-AP | Rabbit Poly | ELISA, IHC, IP |
| ABCB7 | 11158-1-AP | Rabbit Poly | ELISA, IP, WB |
| AFG3L2 | 3 14631-1-AP | Rabbit Poly | ELISA, IF, IHC, IP, WB |
| ANO10 | 21901-1-AP | Rabbit Poly | ELISA, IP, WB |
| APLP2 | 15041-1-AP | Rabbit Poly | ELISA, IHC, IP, WB |
| Ataxin 2 | 2 21776-1-AP | Rabbit Poly | ELISA, IF, IHC, IP, WB |
| ATN1 | 19243-1-AP | Rabbit Poly | ELISA, IHC, WB |
| ATX3, ATXN3 | 3 13505-1-AP | Rabbit Poly | ELISA, IHC, WB |
| ATXN10 | 1 15693-1-AP | Rabbit Poly | ELISA, IF, IHC, IP, WB |
| CABC1 | 15528-1-AP | Rabbit Poly | ELISA, IF, WB |
| CNTN4 | 12777-1-AP | Rabbit Poly | ELISA, WB |
| ITPR1-specific | 19962-1-AP | Rabbit Poly | ELISA, FC, IHC, WB |
| mGluR1 | 1 19955-1-AP | Rabbit Poly | ELISA, FC, IHC, WB |
| NOP56 | 18181-1-AP | Rabbit Poly | ELISA, WB |
| PICK1 | 3 10983-2-AP | Rabbit Poly | ELISA, IF, IHC, IP, WB |

| Antibody Name | Cat. No. | Type | Applications |
|---------------|---------------------|-------------|----------------------------|
| PKC gamma | 1 14364-1-AP | Rabbit Poly | ELISA, FC, IF, IHC, IP, WB |
| PPP2R2B | 13123-1-AP | Rabbit Poly | ELISA, IF, IP, WB |
| PSMC1 | 2 11196-1-AP | Rabbit Poly | ELISA, WB |
| SPTBN2 | 1 55107-1-AP | Rabbit Poly | ELISA, WB |
| STUB1 | 1 55430-1-AP | Rabbit Poly | ELISA, IF, IHC, WB |
| TBP | 8 22006-1-AP | Rabbit Poly | ELISA, IP, WB |
| TBP | 1 66166-1-Ig | Mouse Mono | ELISA, IF, IHC, IP, WB |
| TBP | 22246-1-AP | Rabbit Poly | ELISA, IF, WB |
| TDP1 | 1 10641-1-AP | Rabbit Poly | ELISA, IP, WB |
| TTBK2 | 2 15072-1-AP | Rabbit Poly | ELISA, IF, IHC, WB |
| Twinkle | 1 13435-1-AP | Rabbit Poly | ELISA, IHC, WB |
| Twinkle | 18793-1-AP | Rabbit Poly | ELISA, IHC, WB |
| VCP | 2 10736-1-AP | Rabbit Poly | ELISA, IF, IHC, IP, WB |
| VCP | 60316-1-Ig | Mouse Mono | ELISA, IF, IHC, WB |

00 This number shows the amount of times our antibody has been cited in a publication.

PROTEINTECH MAKES EVERY ANTIBODY IN IT'S 12,000-STRONG CATALOG.

CONTACT US

Proteintech Group *US Head Office*

| | |
|----------------|---|
| PHONE | 1 (888) 4PTGLAB (1-888-478-4522) (toll free in USA), or 1(312) 455-8498 (outside USA) |
| FAX | 1 (312) 455-8408 |
| ADDRESS | Proteintech Group, Inc. 5400 Pearl Street, Suite 300, Rosemont, IL 60018, USA |
| EMAIL | proteintech@ptglab.com |

Proteintech Europe *United Kingdom*

| | |
|----------------|--|
| PHONE | +44 (161) 8393007 |
| FAX | +44 (161) 2413103 |
| ADDRESS | Proteintech Europe, Ltd. 4th Floor, 196 Deansgate, Manchester, M3 3WF |
| EMAIL | europe@ptglab.com |

Proteintech Europe *Germany*

| | |
|--------------|--|
| EMAIL | germany@ptglab.com Sales and technical support only. |
|--------------|--|

Proteintech *China Office*

| | |
|----------------|---|
| PHONE | 027-87531629 or 4006-900-926 |
| FAX | 027-87531627 |
| ADDRESS | Wuhan Sanying Biotechnologies D3-3, No.666 Gaoxin Avenue, Wuhan East Lake Hi-tech Development Zone Wuhan, Hubei, P.R.C |
| EMAIL | Proteintech-CN@ptglab.com |

Support

Available 24 hours via Live Chat and 9-5 (CDT) via phone.

Email support also available.

LIVE CHAT
www.ptglab.com

TWITTER
[@proteintech](https://twitter.com/proteintech)

BLOG
www.ptglab.com/news/blog

YOUTUBE
www.youtube.com/Proteintech



We are ISO 9001 and
ISO 13485 accredited.