

SignalBright Chemiluminescent Substrate Range

Introducing Proteintech's new chemiluminescent substrate line, SignalBright, for highly sensitive detection of low abundant target proteins with long lasting signal.

	————— Increasing Sensitivity —————>		
	SignalBright Pro	SignalBright Plus	SignalBright Max
Catalogue no.	PK10011	PK10012	PK10013
Sensitivity	Mid/high - high femtogram	Mid - high femtogram	Low - mid femtogram
EQUIVALENT TO:	SUPERSIGNAL™ WEST DURA	UNPARALLELED PERFORMANCE	SUPERSIGNAL™ WEST FEMTO
Stable signal duration	>5 hours	>3 hours	>2 hours
Sizes	20mL, 100mL, 200mL	20mL, 100mL, 200mL	20mL, 100mL,
Price	\$69, \$289, \$389	\$89, \$369, \$509	\$79, \$299

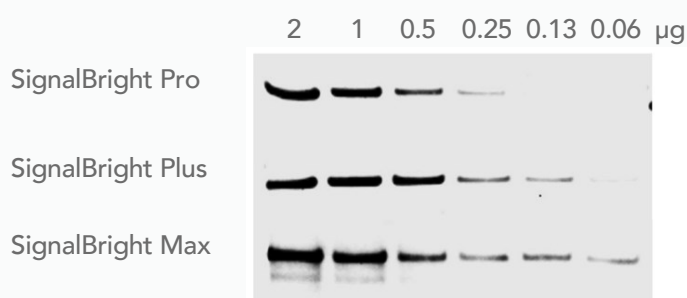


Figure 2: Comparison of Proteintech's SignalBright Pro (PK10011), SignalBright Plus (PK10012), and SignalBright Max (PK10013) Enhanced Chemiluminescent Substrate. Serial dilutions of HeLa cell lysate. Primary antibody: Proteintech Beta Catenin 51067-2-AP, 1:20,000. Secondary: HRP-Goat anti-Rabbit IgG (H&L) (11-0201-0503) at a 1:100,000 dilution. Exposure Time: 30 seconds.

Product highlights:

- ✓ Equivalent or unparalleled performance to leading competitors
- ✓ Sensitive detection of low abundant proteins
- ✓ Extremely stable signal
- ✓ Competitive pricing