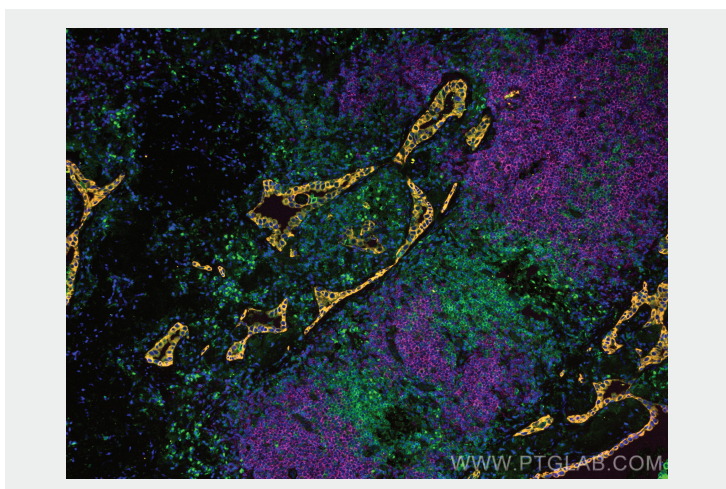


# Antibodies and Reagents for Tumor Infiltrating Lymphocytes (TILs)



## Multiplex fluorescent staining of TILs in lung cancer

Expression of KRT5 (yellow) in lung cancer cells CD3E (green) and CD20 (pink) staining indicates presence of tumor infiltrating lymphocytes in lung cancer tissues.

<b>Antibodies</b>	<b>Cat. No.</b>
CoraLite 555-conjugated pan-keratin Polyclonal Antibody	CL555-26411
CoraLite 488-conjugated CD3 Monoclonal Antibody	CL488-60181
CoraLite 647-conjugated CD20 Monoclonal Antibody	CL647-60271

## Magnetic Cell Separation Systems

Product Name	Magnetic Beads	Magnetic Bead Kit
Human CD3 Cell Separation System	MS002	KMS001
Human CD4 Cell Separation System	MS003	KMS002
Human CD8 Cell Separation System	MS004	KMS003
Human CD19 Cell Separation System	MS005	KMS004
Streptavidin Beads	MS001	

## Cytokines for the Expansion of TILs

Protein Name	Cat. No.	Expressed from	Purity	Reactivity
HumanKine® Recombinant human IL-2	HZ-1015	HEK293	>95%	Human, Mouse
HumanKine® Recombinant human IL-2*	HZ-1015-GMP	HEK293	>95%	Human, Mouse

\*GMP Grade

## ELISA Kits for Screening TILs

Kit Name	Cat. No.	Sample Type	Sensitivity
Mouse IFN-gamma ELISA Kit	KE10001	Serum, plasma, cell culture, supernatants	5.5 pg/mL
AuthentiKine™ Human IFN-gamma ELISA Kit	KE00146	Serum, plasma, cell culture, supernatants	0.4 pg/mL
Rat IFN-gamma ELISA Kit	KE20007	Cell culture, supernatants	3.5 pg/mL

## Primary Antibodies

Proteintech offers highly validated antibodies for the study of TILs, including many popular clones. Our primary antibodies are offered unconjugated for multiple applications and conjugated to fluorescent dyes for IF and flow cytometry assays.



Product Name	Applications	Species Reactivity	Conjugated to Fluorescent Dyes for IF & FC					
			488	594	647	FITC	PE	APC
CD3 & CD3ε	WB, IP, IHC, IF, FC, ELISA	Human, Mouse, Rat, +	★	★	★	★	★	★
CD4	WB, IP, IHC, IF, FC	Human, Mouse, Rat, +	★		★	★	★	★
CD8	WB, IHC, IF, FC, ELISA	Human, Mouse	★	★	★	★	★	★
CD14	WB, IHC, IF, FC, ELISA	Human, Mouse, Rat	★		★	★	★	
CD16	WB, IHC, IF, FC, ELISA	Human, Mouse, Rat	★		★	★	★	★
CD19	WB, IHC, IF, FC, ELISA	Human, Rat	★	★	★	★	★	★
CD20	WB, IP, IHC, IF, FC, ELISA	Human	★		★	★	★	★
CD25	FC, FC(Intra), ELISA	Human, Mouse	★		★	★	★	★
CD28	WB, IHC, IF, FC, ELISA	Human, Mouse, Rat	★	★	★	★	★	★
CD39	WB, IP, IHC, IF, FC, ELISA	Human, Mouse, Rat						
CD45, CD45RA, CD45RO	WB, IP, IHC, IF, FC, ELISA	Human, Mouse, Rat, +	★	★	★	★	★	★
CD56	WB, IHC, IF, FC	Human, Mouse, Rat					★	
CD57	WB, IHC, IF, FC, ELISA	Human, Mouse						
CD62L	IHC, IF, FC, ELISA	Human, Mouse			★	★	★	★
CD64	WB	Human						
CD69	WB, IHC, IF, FC, ELISA	Human, Mouse	★		★	★	★	★
CD73	WB, IHC, IF, FC	Human, Mouse, Rat	★	★	★	★	★	★
CD95	WB, IP, ChIP, IHC, IF, FC, ELISA	Human +				★	★	★
CD103	FC	Mouse	★		★	★	★	
CD137	FC, ELISA	Human +					★	★
CD154	WB, IP, IHC, IF, FC, ELISA	Human, Mouse, Rat	★		★	★	★	
CD161	WB, IHC, FC, ELISA	Human, Mouse	★		★	★	★	★
CD279/PD-1	WB, IP, IHC, IF, FC, ELISA	Human, Mouse, Rat	★		★	★	★	★
CD314	FC	Human				★	★	★
TCRβ	IF, FC	Mouse	★		★	★	★	★
CCR7	WB, IHC, IF, FC	Human, Mouse, Rat					★	

## IHCeasy Ready-To-Use IHC Kits

Complete workflow kits that contain all IHC reagents in ready-to-use format from antigen retrieval through mounting media, including the primary antibody.

Kit Name	Cat. No.	Species Reactivity	Sample Type
IHCeasy CD3 Ready-To-Use IHC Kit	KHC0013	Human	FFPE tissue
IHCeasy CD8 Ready-To-Use IHC Kit	KHC0014	Human	FFPE tissue
IHCeasy CD14 Ready-To-Use IHC Kit	KHC0028	Human	FFPE tissue
IHCeasy CD16 Ready-To-Use IHC Kit	KHC0029	Human	FFPE tissue
IHCeasy CD20 Ready-To-Use IHC Kit	KHC0018	Human	FFPE tissue
IHCeasy CD45 Ready-To-Use IHC Kit	KHC0031	Human	FFPE tissue
IHCeasy PD-1 Ready-To-Use IHC Kit	KHC0064	Human	FFPE tissue