

For Research Use Only

# CDK2 Polyclonal antibody

Catalog Number: 10122-1-AP

Featured Product

256 Publications



## Basic Information

**Catalog Number:**

10122-1-AP

**Size:**

150ul, Concentration: 600 µg/ml by Nanodrop;

**Source:**

Rabbit

**Isotype:**

IgG

**Immunogen Catalog Number:**

AG0166

**GenBank Accession Number:**

BC003065

**GeneID (NCBI):**

1017

**UNIPROT ID:**

P24941

**Full Name:**

cyclin-dependent kinase 2

**Calculated MW:**

33 kDa

**Observed MW:**

33 kDa

**Purification Method:**

Antigen affinity purification

**Recommended Dilutions:**

WB 1:2000-1:16000

IP 0.5-4.0 µg for 1.0-3.0 mg of total protein lysate

IHC 1:50-1:500

IF 1:50-1:500

## Applications

**Tested Applications:**

WB, IP, IF, FC, IHC, ELISA

**Cited Applications:**

WB, IP, IF, FC, IHC, CoIP

**Species Specificity:**

human, mouse, rat

**Cited Species:**

human, rat, sheep, sea cucumbers, mouse, fish, zebrafish

**Positive Controls:**

**WB:** HepG2 cells, MCF-7 cells, A431 cells, NIH/3T3 cells, rat kidney tissue, HEK-293 cells, Jurkat cells, K-562 cells, HeLa cells

**IP:** HeLa cells,

**IHC:** human liver cancer tissue, human prostate cancer tissue

**IF:** HeLa cells, mouse testis tissue

**Note-IHC: suggested antigen retrieval with TE buffer pH 9.0; (\*) Alternatively, antigen retrieval may be performed with citrate buffer pH 6.0**

## Background Information

CDK2(Cyclin-dependent kinase 2) is also named as CDKN2 and belongs to the protein kinase superfamily,CMGC Ser/Thr protein kinase family, CDC2/CDKX subfamily.It is involved in the control of the cell cycle; essential for meiosis, but dispensable for mitosis.It has 2 isoforms produced by alternative splicing.

## Notable Publications

Author	Pubmed ID	Journal	Application
Jing Zhao	32986180	Biotechnol Lett	WB
Xiaoman Chen	30207732	Mol Pharm	WB
Jingjing Pan	36152427	Ecotoxicol Environ Saf	WB

## Storage

**Storage:**

Store at -20°C. Stable for one year after shipment.

**Storage Buffer:**

PBS with 0.02% sodium azide and 50% glycerol pH 7.3.

Aliquoting is unnecessary for -20°C storage

\*\*\* 20ul sizes contain 0.1% BSA

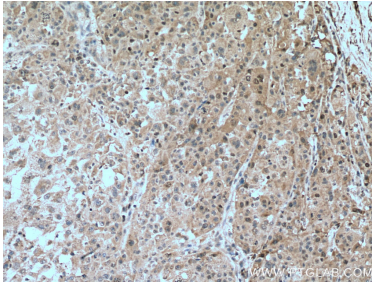
For technical support and original validation data for this product please contact:

T: 1 (888) 4PTGLAB (1-888-478-4522) (toll free in USA), or 1(312) 455-8498 (outside USA)

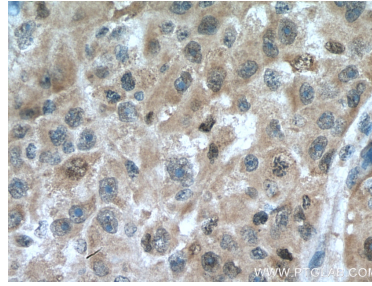
E: proteintech@ptglab.com  
W: ptglab.com

This product is exclusively available under Proteintech Group brand and is not available to purchase from any other manufacturer.

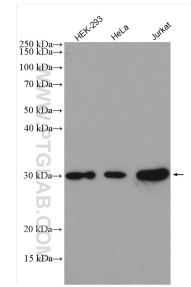
## Selected Validation Data



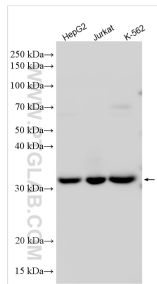
Immunohistochemical analysis of paraffin-embedded human liver cancer tissue slide using 10122-1-AP (CDK2 antibody) at dilution of 1:200 (under 10x lens). Heat mediated antigen retrieval with Tris-EDTA buffer (pH 9.0).



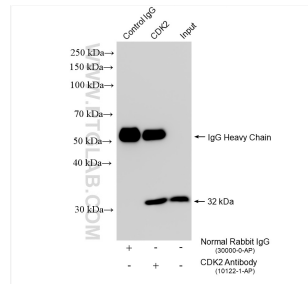
Immunohistochemical analysis of paraffin-embedded human liver cancer tissue slide using 10122-1-AP (CDK2 antibody) at dilution of 1:200 (under 40x lens). Heat mediated antigen retrieval with Tris-EDTA buffer (pH 9.0).



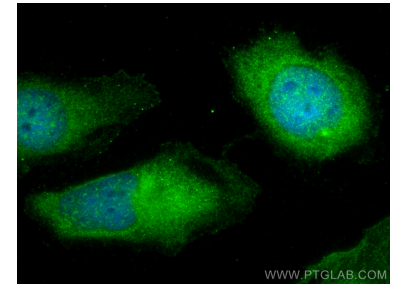
Various lysates were subjected to SDS PAGE followed by western blot with 10122-1-AP (CDK2 antibody) at dilution of 1:20000 incubated at room temperature for 1.5 hours.



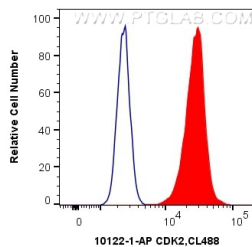
Various lysates were subjected to SDS PAGE followed by western blot with 10122-1-AP (CDK2 antibody) at dilution of 1:8000 incubated at room temperature for 1.5 hours.



IP result of anti-CDK2 (IP:10122-1-AP, 4ug; Detection:10122-1-AP 1:10000) with HeLa cells lysate 1200 ug.



Immunofluorescent analysis of (-20°C Methanol) fixed HeLa cells using CDK2 antibody (10122-1-AP) at dilution of 1:200 and CoraLite®488-Conjugated AffiniPure Goat Anti-Rabbit IgG(H+L).



1X10<sup>6</sup> HepG2 cells were intracellularly stained with 0.4 ug Anti-Human CDK2 (10122-1-AP) and CoraLite®488-Conjugated AffiniPure Goat Anti-Rabbit IgG(H+L) at dilution 1:1000 (red), or 0.4 ug Control Antibody. Cells were fixed with 4% PFA and permeabilized with Flow Cytometry Perm Buffer (PF00011-C).