

For Research Use Only

STAT1 Polyclonal antibody

Catalog Number: 10144-2-AP

Featured Product

127 Publications



Basic Information

Catalog Number:

10144-2-AP

Size:

150ul, Concentration: 700 µg/ml by Nanodrop;

Source:

Rabbit

Isotype:

IgG

Immunogen Catalog Number:

AG0199

GenBank Accession Number:

BC002704

GeneID (NCBI):

6772

UNIPROT ID:

P42224

Full Name:

signal transducer and activator of transcription 1, 91kDa

Calculated MW:

83 kDa

Observed MW:

83-87 kDa

Purification Method:

Antigen affinity purification

Recommended Dilutions:

WB 1:2000-1:10000

IP 0.5-4.0 ug for 1.0-3.0 mg of total protein lysate

IF 1:50-1:500

Applications

Tested Applications:

WB, IP, IF, ELISA, FC (Intra)

Cited Applications:

WB, IP, IF, IHC, CoIP, ChIP

Species Specificity:

human

Cited Species:

human, rat, mouse

Positive Controls:

WB: A431 cells, HEK-293 cells, A549 cells, K-562 cells, PC-3 cells

IP: PC-3 cells,

IF: PC-3 cells,

Background Information

STAT1 (signal transducers and activators of transcription 1) is a member of the STAT protein family. In response to cytokines and growth factors, STAT family members are phosphorylated by the receptor associated kinases, and then form homo- or heterodimers that translocate to the cell nucleus where they act as transcription activators. Various ligands, including interferons- and -, EGF, PDGF and IL-6, can activate STAT1. STAT1 protein mediates the expression of a variety of genes, which is thought to be important for cell viability in response to different cell stimuli and pathogens. This antibody is a rabbit polyclonal antibody raised against residues near the N terminus of human STAT1.

Notable Publications

| Author | Pubmed ID | Journal | Application |
|-----------|-----------|---------------|-------------|
| Xin Wen | 36249018 | Front Oncol | WB |
| Lin Deng | 36170649 | J Med Chem | WB |
| Bin Zhang | 32964498 | Neurochem Res | WB,IHC |

Storage

Storage:

Store at -20°C. Stable for one year after shipment.

Storage Buffer:

PBS with 0.02% sodium azide and 50% glycerol pH 7.3.

Aliquoting is unnecessary for -20°C storage

*** 20ul sizes contain 0.1% BSA

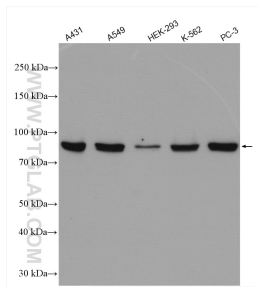
For technical support and original validation data for this product please contact:

T: 1 (888) 4PTGLAB (1-888-478-4522) (toll free in USA), or 1(312) 455-8498 (outside USA)

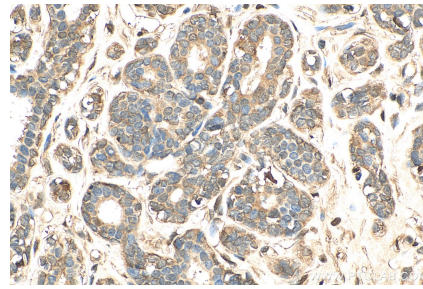
E: proteintech@ptglab.com
W: ptglab.com

This product is exclusively available under Proteintech Group brand and is not available to purchase from any other manufacturer.

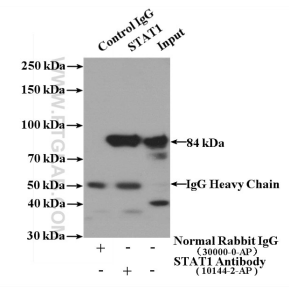
Selected Validation Data



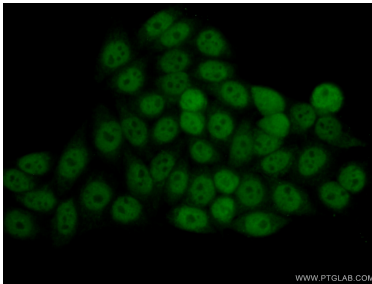
Various lysates were subjected to SDS PAGE followed by western blot with 10144-2-AP (STAT1 antibody) at dilution of 1:5000 incubated at room temperature for 1.5 hours.



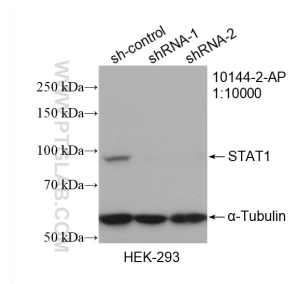
Immunohistochemical analysis of paraffin-embedded human breast cancer tissue slide using 10144-2-AP (STAT1 antibody) at dilution of 1:200 (under 40x lens). Heat mediated antigen retrieval with Tris-EDTA buffer (pH 9.0).



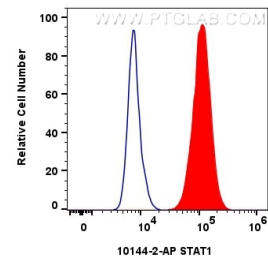
IP result of anti-STAT1 (IP:10144-2-AP, 4ug; Detection:10144-2-AP 1:500) with PC-3 cells lysate 3200ug.



Immunofluorescent analysis of (10% Formaldehyde) fixed PC-3 cells using 10144-2-AP (STAT1 antibody) at dilution of 1:50 and Alexa Fluor 488-conjugated AffiniPure Goat Anti-Rabbit IgG(H+L).



WB result of STAT1 antibody (10144-2-AP; 1:10000; incubated at room temperature for 1.5 hours) with sh-Control and sh-STAT1 transfected HEK-293 cells.



(blue)1x10⁶ MCF-7 cells were intracellularly stained with 0.4 ug Anti-Human STAT1 (10144-2-AP)(red), or 0.4 ug Rabbit IgG control Rabbit PolyAb (30000-0-AP). Cells were fixed with 4% PFA and permeabilized with Flow Cytometry Perm Buffer (PF00011-C).