

For Research Use Only

# S100A6 Polyclonal antibody

Catalog Number: 10245-1-AP

Featured Product

19 Publications



## Basic Information

### Catalog Number:

10245-1-AP

### Size:

150ul, Concentration: 1000 µg/ml by Nanodrop and 640 µg/ml by Bradford method using BSA as the standard;

### Source:

Rabbit

### Isotype:

IgG

### Immunogen Catalog Number:

AG0385

### GenBank Accession Number:

BC001431

### GeneID (NCBI):

6277

### UNIPROT ID:

P06703

### Full Name:

S100 calcium binding protein A6

### Calculated MW:

10 kDa

### Observed MW:

10 kDa

### Purification Method:

Antigen affinity purification

### Recommended Dilutions:

WB 1:2000-1:12000

IP 0.5-4.0 µg for 1.0-3.0 mg of total protein lysate

IHC 1:400-1:1600

IF 1:200-1:800

## Applications

### Tested Applications:

WB, IP, IF, FC, IHC, ELISA

### Cited Applications:

WB, IF, IHC

### Species Specificity:

human

### Cited Species:

human, rat, mouse, monkey

### Positive Controls:

WB : A549 cells, HeLa cells

IP : A549 cells,

IHC : human stomach cancer tissue, human liver cancer tissue, human pancreas cancer tissue, human colon cancer tissue

IF : MCF-7 cells,

**Note-IHC: suggested antigen retrieval with TE buffer pH 9.0; (\*) Alternatively, antigen retrieval may be performed with citrate buffer pH 6.0**

## Background Information

S100A6 is also named as calcyclin, prolactin receptor-associated protein (PRA), growth factor-inducible protein 2A9 or MLN4. It belongs to S100 family of low molecular weight, acidic, calcium-binding proteins which contain two EF-hand calcium binding sites. S100A6 may function as a calcium sensor to activate several processes in the calcium signal transduction pathway of cell growth, proliferation, secretion and exocytosis. The antibody is specific for S100A6.

## Notable Publications

Author	Pubmed ID	Journal	Application
Anchuan Li	27596819	Mol Carcinog	WB,IHC
Elisa Teyssou	33218681	Neurobiol Aging	WB,IHC
Xu Nai-Yu NY	19492239	J Toxicol Environ Health A	WB,IHC

## Storage

### Storage:

Store at -20°C. Stable for one year after shipment.

### Storage Buffer:

PBS with 0.02% sodium azide and 50% glycerol pH 7.3.

Aliquoting is unnecessary for -20°C storage

\*\*\* 20ul sizes contain 0.1% BSA

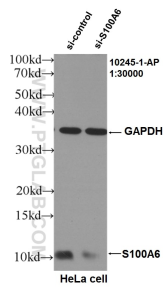
For technical support and original validation data for this product please contact:

T: 1 (888) 4PTGLAB (1-888-478-4522) (toll free in USA), or 1(312) 455-8498 (outside USA)

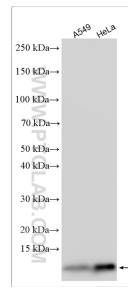
E: proteintech@ptglab.com  
W: ptglab.com

This product is exclusively available under Proteintech Group brand and is not available to purchase from any other manufacturer.

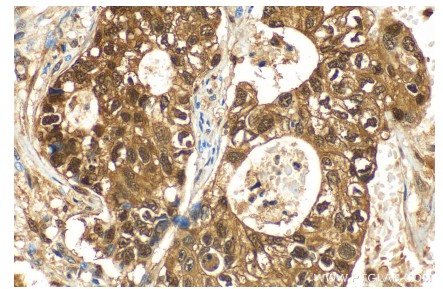
## Selected Validation Data



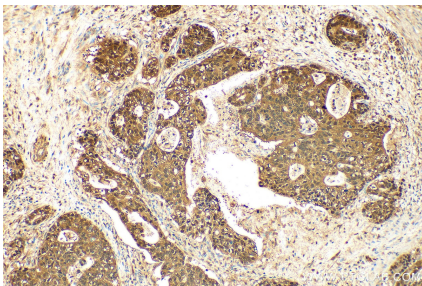
WB result of S100A6 antibody (10245-1-AP, 1:30000) with si-Control and si-S100A6 transfected HeLa cells..



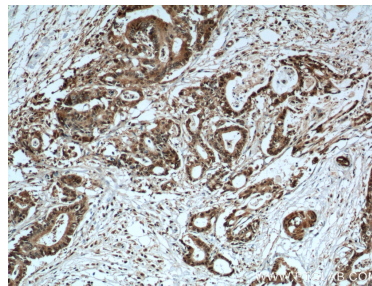
Various lysates were subjected to SDS PAGE followed by western blot with 10245-1-AP (S100A6 antibody) at dilution of 1:6000 incubated at room temperature for 1.5 hours.



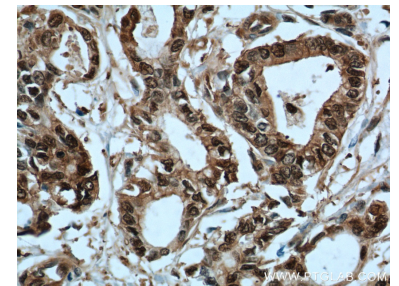
Immunohistochemical analysis of paraffin-embedded human stomach cancer tissue slide using 10245-1-AP (S100A6 antibody) at dilution of 1:800 (under 40x lens). Heat mediated antigen retrieval with Tris-EDTA buffer (pH 9.0).



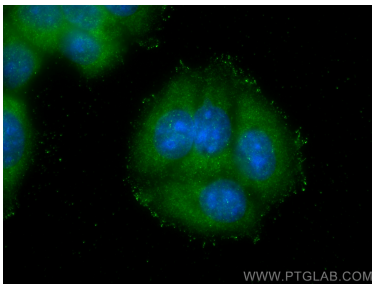
Immunohistochemical analysis of paraffin-embedded human stomach cancer tissue slide using 10245-1-AP (S100A6 antibody) at dilution of 1:800 (under 10x lens). Heat mediated antigen retrieval with Tris-EDTA buffer (pH 9.0).



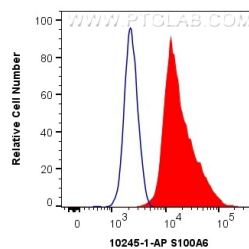
Immunohistochemical analysis of paraffin-embedded human pancreas cancer tissue slide using 10245-1-AP (S100A6 Antibody) at dilution of 1:200 (under 10x lens). Heat mediated antigen retrieval with Tris-EDTA buffer (pH 9.0).



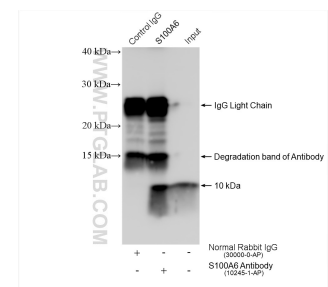
Immunohistochemical analysis of paraffin-embedded human pancreas cancer tissue slide using 10245-1-AP (S100A6 Antibody) at dilution of 1:200 (under 40x lens). Heat mediated antigen retrieval with Tris-EDTA buffer (pH 9.0).



Immunofluorescent analysis of (-20°C Methanol) fixed MCF-7 cells using S100A6 antibody (10245-1-AP) at dilution of 1:400 and CoraLite@488-Conjugated AffiniPure Goat Anti-Rabbit IgG(H+L).



$1 \times 10^6$  MCF-7 cells were intracellularly stained with 0.4 ug Anti-Human S100A6 (10245-1-AP) and CoraLite@488-Conjugated AffiniPure Goat Anti-Rabbit IgG(H+L) at dilution 1:1000 (red), or 0.4 ug Isotype Control. Cells were fixed and permeabilized with Transcription Factor Staining Buffer Kit (PF00011).



IP result of anti-S100A6 (IP:10245-1-AP, 4ug; Detection:10245-1-AP 1:5000) with A549 cells lysate 840 ug.