

For Research Use Only

# Caspase 9/p35/p10 Polyclonal antibody



Catalog Number: 10380-1-AP

Featured Product

708 Publications

## Basic Information

### Catalog Number:

10380-1-AP

### Size:

150ul, Concentration: 500 µg/ml by Nanodrop;

### Source:

Rabbit

### Isotype:

IgG

### Immunogen Catalog Number:

AG0404

### GenBank Accession Number:

BC002452

### GeneID (NCBI):

842

### UNIPROT ID:

P55211

### Full Name:

caspase 9, apoptosis-related cysteine peptidase

### Calculated MW:

46 kDa

### Observed MW:

46 kDa, 30-39 kDa

### Purification Method:

Antigen affinity purification

### Recommended Dilutions:

WB 1:300-1:1000

IP 0.5-4.0 µg for 1.0-3.0 mg of total protein lysate

IHC 1:50-1:200

IF 1:50-1:500

## Applications

### Tested Applications:

WB, IP, IF, FC, IHC, ELISA

### Cited Applications:

WB, IF, RIP, IHC, ELISA

### Species Specificity:

human, mouse

### Cited Species:

human, goat, rat, sheep, mouse, rabbit, zebrafish, hamster, pig, canine

**Note-IHC: suggested antigen retrieval with TE buffer pH 9.0; (\*) Alternatively, antigen retrieval may be performed with citrate buffer pH 6.0**

### Positive Controls:

WB: Jurkat cells, HeLa cells, HL-60 cells, Staurosporine treated Jurkat cells

IP: HeLa cells,

IHC: human heart tissue, mouse lung tissue

IF: HepG2 cells,

## Background Information

Caspase 9, apoptosis-related cysteine protease (CASP9, synonyms: MCH6, APAF3, APAF-3, ICE-LAP6, CASPASE-9c) is a member of the cysteine-aspartic acid protease (caspase) family. Sequential activation of caspases plays a central role in the execution-phase of cell apoptosis. Caspases exist as inactive proenzymes which undergo proteolytic processing at conserved aspartic residues to produce 2 subunits, large and small, that dimerize to form the active enzyme. Caspase 9 is processed by APAF1; this step is thought to be one of the earliest in the caspase activation cascade. 10380-1-AP can recognize the pre- and cleaved- caspase 9. In recent years, the localization of caspase 9 was a focus of interest. Beside its cytoplasmic distribution, a very extensive localization study was done on rat brain tissue, where caspase 9 was found located predominantly in the nucleus and to a lesser extend in the cytoplasm [PMID: 15541731].

## Notable Publications

Author	Pubmed ID	Journal	Application
Xiao-Feng Zhu	36180975	Phytother Res	WB
Faisal Aziz	26427350	Toxicol In Vitro	WB
Zilu Zhang	34570444	Cancer Biol Med	WB

## Storage

### Storage:

Store at -20°C. Stable for one year after shipment.

### Storage Buffer:

PBS with 0.02% sodium azide and 50% glycerol pH 7.3.

Aliquoting is unnecessary for -20°C storage

\*\*\* 20ul sizes contain 0.1% BSA

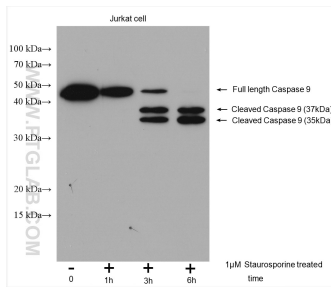
For technical support and original validation data for this product please contact:

T: 1 (888) 4PTGLAB (1-888-478-4522) (toll free in USA), or 1(312) 455-8498 (outside USA)

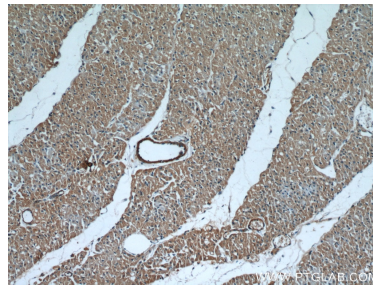
E: proteintech@ptglab.com  
W: ptglab.com

This product is exclusively available under Proteintech Group brand and is not available to purchase from any other manufacturer.

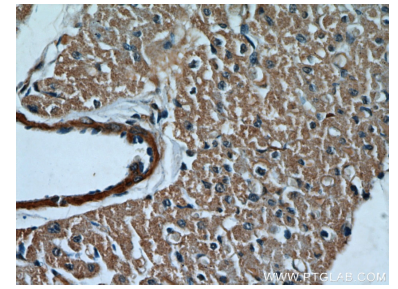
## Selected Validation Data



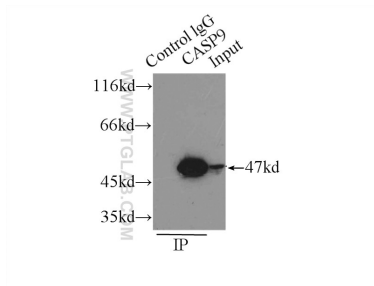
Untreated and Staurosporine treated Jurkat cells were subjected to SDS PAGE followed by western blot with 10380-1-AP (Caspase 9/p35/p10 antibody) at dilution of 1:300 incubated at room temperature for 1.5 hours.



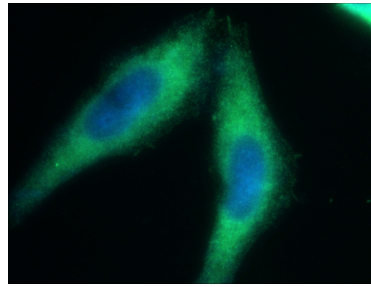
Immunohistochemical analysis of paraffin-embedded human heart tissue slide using 10380-1-AP (Caspase 9/p35/p10 antibody) at dilution of 1:50 (under 10x lens).



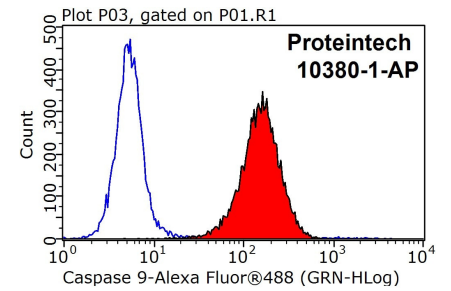
Immunohistochemical analysis of paraffin-embedded human heart tissue slide using 10380-1-AP (Caspase 9/p35/p10 antibody) at dilution of 1:50 (under 40x lens).



IP result of anti-Caspase 9/p35/p10 (IP:10380-1-AP, 3ug; Detection:10380-1-AP 1:200) with HeLa cells lysate 2500 ug.



Immunofluorescent analysis of (-20°C Ethanol) fixed HepG2 cells using 10380-1-AP (Caspase 9/p35/p10 antibody) at dilution of 1:50 and Alexa Fluor 488-conjugated AffiniPure Goat Anti-Rabbit IgG(H+L).



1X10<sup>6</sup> HepG2 cells were stained with 0.2ug Caspase 9/p35/p10 antibody (10380-1-AP, red) and control antibody (blue). Fixed with 90% MeOH blocked with 3% BSA (30 min). Alexa Fluor 488-conjugated AffiniPure Goat Anti-Rabbit IgG(H+L) with dilution 1:1000.