

For Research Use Only

# CHMP2A Polyclonal antibody

Catalog Number: 10477-1-AP

Featured Product

42 Publications



## Basic Information

<b>Catalog Number:</b> 10477-1-AP	<b>GenBank Accession Number:</b> BC002502	<b>Purification Method:</b> Antigen affinity purification
<b>Size:</b> 150ul , Concentration: 650 µg/ml by Nanodrop;	<b>GeneID (NCBI):</b> 27243	<b>Recommended Dilutions:</b> WB 1:500-1:1000 IHC 1:50-1:500
<b>Source:</b> Rabbit	<b>Full Name:</b> chromatin modifying protein 2A	
<b>Isotype:</b> IgG	<b>Calculated MW:</b> 25 kDa	
<b>Immunogen Catalog Number:</b> AG0719	<b>Observed MW:</b> 32 kDa	

## Applications

<b>Tested Applications:</b> IHC, WB, ELISA	<b>Positive Controls:</b> WB : HepG2 cells, HEK-293 cells, HeLa cells IHC : human liver cancer tissue,
<b>Cited Applications:</b> IF, IP, WB	
<b>Species Specificity:</b> human, mouse, rat	
<b>Cited Species:</b> human, rat, mouse	

**Note-IHC: suggested antigen retrieval with TE buffer pH 9.0; (\*) Alternatively, antigen retrieval may be performed with citrate buffer pH 6.0**

## Background Information

CHMP2A, also known as Vps2-1, belongs to the chromatin-modifying protein/charged multivesicular body protein (CHMP) family. CHMP2A is a component of ESCRT-III (endosomal sorting complex required for transport III), a complex involved in degradation of surface receptor proteins and formation of endocytic multivesicular bodies (MVBs). It has been shown that CHMP2A can interact with and regulate the function of the AAA-ATPase VPS4B (PMID: 15173323). CHMP2A is also reported to be involved in HIV budding (PMID: 21396898; 23051622).

## Notable Publications

Author	Pubmed ID	Journal	Application
Shiwei Liu	30232450	Nature	IF
Bhaskar Saha	33052966	PLoS Pathog	
Maja Radulovic	30314966	EMBO J	IF

## Storage

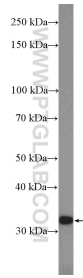
**Storage:**  
Store at -20°C. Stable for one year after shipment.  
**Storage Buffer:**  
PBS with 0.02% sodium azide and 50% glycerol pH 7.3.  
Aliquoting is unnecessary for -20°C storage

\*\*\* 20ul sizes contain 0.1% BSA

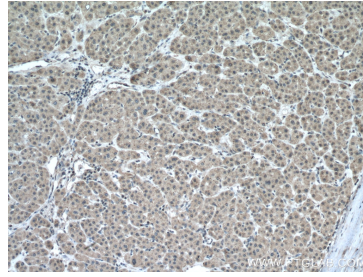
For technical support and original validation data for this product please contact:  
T: 1 (888) 4PTGLAB (1-888-478-4522) (toll free in USA), or 1(312) 455-8498 (outside USA)  
E: proteintech@ptglab.com  
W: ptglab.com

This product is exclusively available under Proteintech Group brand and is not available to purchase from any other manufacturer.

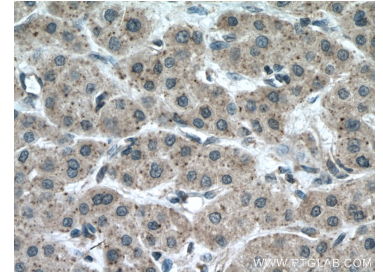
## Selected Validation Data



HepG2 cells were subjected to SDS PAGE followed by western blot with 10477-1-AP (CHMP2A Antibody) at dilution of 1:600 incubated at room temperature for 1.5 hours.



Immunohistochemical analysis of paraffin-embedded human liver cancer tissue slide using 10477-1-AP (CHMP2A antibody) at dilution of 1:200 (under 10x lens. Heat mediated antigen retrieval with Tris-EDTA buffer (pH 9.0).



Immunohistochemical analysis of paraffin-embedded human liver cancer tissue slide using 10477-1-AP (CHMP2A antibody) at dilution of 1:200 (under 40x lens. Heat mediated antigen retrieval with Tris-EDTA buffer (pH 9.0).