

For Research Use Only

# KEAP1 Polyclonal antibody

Catalog Number: 10503-2-AP

Featured Product

577 Publications



## Basic Information

<b>Catalog Number:</b> 10503-2-AP	<b>GenBank Accession Number:</b> BC002930	<b>Purification Method:</b> Antigen affinity purification
<b>Size:</b> 150ul , Concentration: 600 µg/ml by Nanodrop;	<b>GeneID (NCBI):</b> 9817	<b>Recommended Dilutions:</b> WB 1:2000-1:10000 IP 0.5-4.0 ug for 1.0-3.0 mg of total protein lysate IHC 1:50-1:500 IF 1:50-1:500
<b>Source:</b> Rabbit	<b>UNIPROT ID:</b> Q14145	
<b>Isotype:</b> IgG	<b>Full Name:</b> kelch-like ECH-associated protein 1	
<b>Immunogen Catalog Number:</b> AG0779	<b>Calculated MW:</b> 624 aa, 70 kDa	
	<b>Observed MW:</b> 55-70 kDa	

## Applications

### Tested Applications:

WB, IP, IF, IHC, ELISA

### Cited Applications:

WB, IP, IF, IHC, CoIP

### Species Specificity:

human, mouse

### Cited Species:

human, chicken, rat, yellow catfish, mouse, monkey, pig, bovine

**Note-IHC: suggested antigen retrieval with TE buffer pH 9.0; (\*) Alternatively, antigen retrieval may be performed with citrate buffer pH 6.0**

### Positive Controls:

**WB** : HEK-293 cells, HepG2 cells, Jurkat cells, MCF-7 cells, HeLa cells

**IP** : mouse skeletal muscle tissue,

**IHC** : human lung cancer tissue, human breast cancer tissue, human skeletal muscle tissue

**IF** : U2OS cells, HepG2 cells

## Background Information

KEAP1, also named as INRF2, KIAA0132 and KLHL19, is part of a multiprotein complex that contains the CUL3-ROC1 ubiquitin ligase, which can ubiquitinate the N-terminal domain of NRF2[PMID: 20173742]. Two molecules of KEAP1 bind to two distinct sites in the N-terminal region of NRF2, the ETGE and DLG sites, which affect the KEAP1-NRF2 interaction and/or its physiological consequences[PMID: 22215675]. KEAP1 retains NFE2L2/NRF2 in the cytosol. It functions as substrate adapter protein for the E3 ubiquitin ligase complex formed by CUL3 and RBX1[PMID: 20427290]. It also retains BPTF in the cytosol. This antibody is a rabbit polyclonal antibody raised against residues near the C terminus of human KEAP1.

## Notable Publications

Author	Pubmed ID	Journal	Application
Lin-Tao Xu	34601084	J Ethnopharmacol	WB
Zhenmao Jia	36238566	Front Pharmacol	WB
Taiwei Wang	36169181	Oncol Rep	WB

## Storage

### Storage:

Store at -20°C. Stable for one year after shipment.

### Storage Buffer:

PBS with 0.02% sodium azide and 50% glycerol pH 7.3.

Aliquoting is unnecessary for -20°C storage

\*\*\* 20ul sizes contain 0.1% BSA

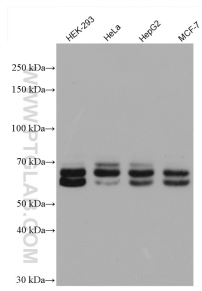
For technical support and original validation data for this product please contact:

T: 1 (888) 4PTGLAB (1-888-478-4522) (toll free in USA), or 1(312) 455-8498 (outside USA)

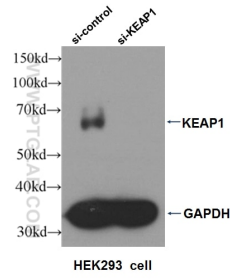
E: proteintech@ptglab.com  
W: ptglab.com

This product is exclusively available under Proteintech Group brand and is not available to purchase from any other manufacturer.

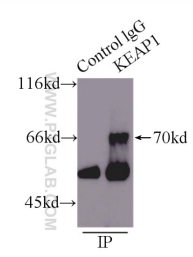
## Selected Validation Data



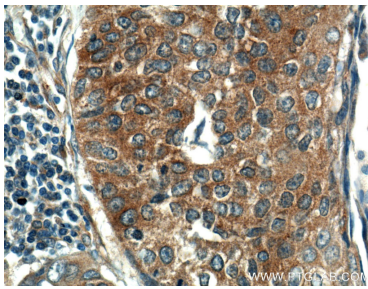
Various lysates were subjected to SDS PAGE followed by western blot with 10503-2-AP (KEAP1 antibody) at dilution of 1:5000 incubated at room temperature for 1.5 hours.



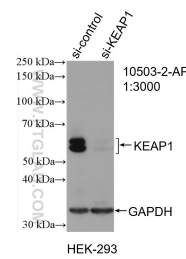
WB result of KEAP1 antibody (10503-2-AP, 1:2000) with si-control and si-KEAP1 transfected HEK293 cell.



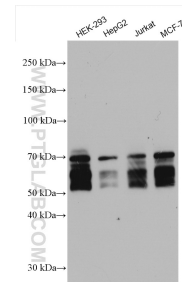
IP result of anti-KEAP1 (IP:10503-2-AP, 5ug; Detection:10503-2-AP 1:600) with mouse skeletal muscle tissue lysate 8000ug.



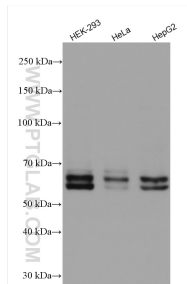
Immunohistochemical analysis of paraffin-embedded human lung cancer tissue slide using 10503-2-AP (KEAP1 Antibody) at dilution of 1:200 (under 10x lens).



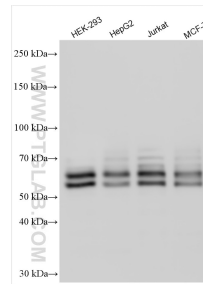
WB result of KEAP1 antibody (10503-2-AP; 1:3000; incubated at room temperature for 1.5 hours) with sh-Control and sh-KEAP1 transfected HEK-293 cells.



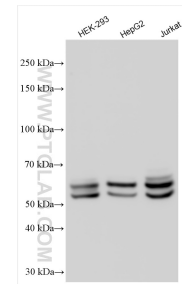
Various lysates were subjected to SDS PAGE followed by western blot with 10503-2-AP (KEAP1 antibody) at dilution of 1:10000 incubated at room temperature for 1.5 hours.



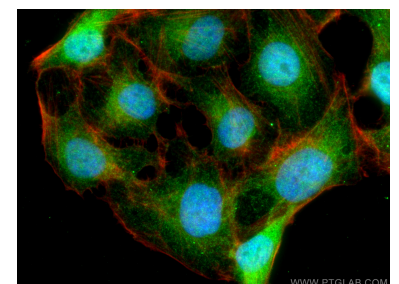
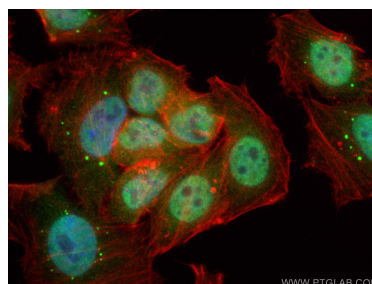
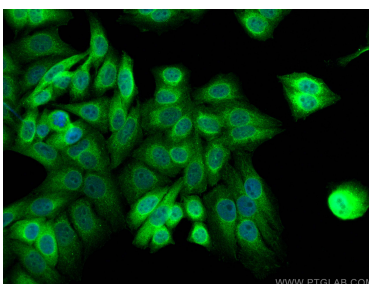
Various lysates were subjected to SDS PAGE followed by western blot with 10503-2-AP (KEAP1 antibody) at dilution of 1:6000 incubated at room temperature for 1.5 hours.



Various lysates were subjected to SDS PAGE followed by western blot with 10503-2-AP (KEAP1 antibody) at dilution of 1:8000 incubated at room temperature for 1.5 hours.



Various lysates were subjected to SDS PAGE followed by western blot with 10503-2-AP (KEAP1 antibody) at dilution of 1:10000 incubated at room temperature for 1.5 hours.



Immunofluorescent analysis of (4% PFA) fixed HepG2 cells using KEAP1 antibody (10503-2-AP) at dilution of 1:200 and CoraLite®488-Conjugated AffiniPure Goat Anti-Rabbit IgG(H+L).

Immunofluorescent analysis of (4% PFA) fixed HepG2 cells using KEAP1 antibody (10503-2-AP) at dilution of 1:200 and CoraLite®488-Conjugated AffiniPure Goat Anti-Rabbit IgG(H+L), CL594-phalloidin (red).

Immunofluorescent analysis of (4% PFA) fixed U2OS cells using KEAP1 antibody (10503-2-AP) at dilution of 1:200 and CoraLite®488-Conjugated AffiniPure Goat Anti-Rabbit IgG(H+L), CL594-Phalloidin (red).