

For Research Use Only

RHOA Polyclonal antibody

Catalog Number: 10749-1-AP

Featured Product

131 Publications



Basic Information

Catalog Number:

10749-1-AP

Size:

150ul , Concentration: 600 µg/ml by Nanodrop;

Source:

Rabbit

Isotype:

IgG

Immunogen Catalog Number:

AG1141

GenBank Accession Number:

BC005976

GeneID (NCBI):

387

UNIPROT ID:

P61586

Full Name:

ras homolog gene family, member A

Calculated MW:

22 kDa

Observed MW:

22 kDa

Purification Method:

Antigen affinity purification

Recommended Dilutions:

WB 1:500-1:2000

IF 1:200-1:800

Applications

Tested Applications:

WB, IF, ELISA

Cited Applications:

WB, IF, IHC

Species Specificity:

human, mouse, rat

Cited Species:

human, rat, mouse, pig

Positive Controls:

WB : HL-60 cells, HeLa cells, MCF-7 cells, PC-12 cells, rat brain tissue, mouse brain tissue, HUVEC cells, NIH/3T3 cells, fetal human brain tissue

IF : HeLa cells,

Background Information

RhoA is a member of the Rho family of small GTPases, which cycle between inactive GDP-bound and active GTP-bound states and function as molecular switches in signal transduction cascades. Rho proteins promote reorganization of the actin cytoskeleton and regulate cell shape, attachment, and motility. Overexpression of RhoA is associated with tumor cell proliferation and metastasis. RhoA signalling is critical to many cellular processes including migration, mechanotransduction, and is often disrupted in carcinogenesis.

Notable Publications

Author	Pubmed ID	Journal	Application
Lichan Mao	36247873	Anal Cell Pathol (Amst)	WB
Kai Cui	27678468	Asian J Androl	WB,IHC
Jing Wang	26409448	Tumour Biol	WB

Storage

Storage:

Store at -20°C. Stable for one year after shipment.

Storage Buffer:

PBS with 0.02% sodium azide and 50% glycerol pH 7.3.

Aliquoting is unnecessary for -20°C storage

*** 20ul sizes contain 0.1% BSA

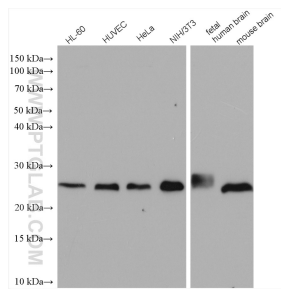
For technical support and original validation data for this product please contact:

T: 1 (888) 4PTGLAB (1-888-478-4522) (toll free in USA), or 1(312) 455-8498 (outside USA)

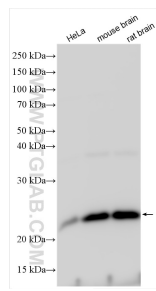
E: proteintech@ptglab.com
W: ptglab.com

This product is exclusively available under Proteintech Group brand and is not available to purchase from any other manufacturer.

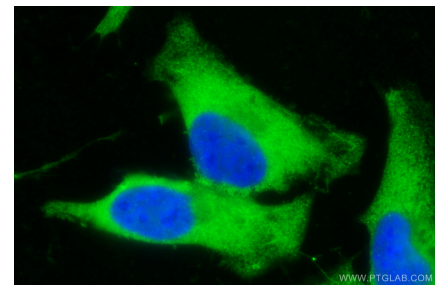
Selected Validation Data



Various lysates were subjected to SDS PAGE followed by western blot with 10749-1-AP (RHOA antibody) at dilution of 1:1000 incubated at room temperature for 1.5 hours.



Various lysates were subjected to SDS PAGE followed by western blot with 10749-1-AP (RHOA antibody) at dilution of 1:4000 incubated at room temperature for 1.5 hours.



Immunofluorescent analysis of (-20°C Methanol) fixed HeLa cells using RHOA antibody (10749-1-AP) at dilution of 1:400 and CoraLite®488-Conjugated AffiniPure Goat Anti-Rabbit IgG(H+L).