

For Research Use Only

MSI2 Polyclonal antibody

Catalog Number: 10770-1-AP **7 Publications**



Basic Information

Catalog Number: 10770-1-AP	GenBank Accession Number: BC001526	Purification Method: Antigen affinity purification
Size: 150ul , Concentration: 450 µg/ml by Nanodrop and 333 µg/ml by Bradford method using BSA as the standard;	GeneID (NCBI): 124540	Recommended Dilutions: WB 1:1000-1:8000 IP 0.5-4.0 ug for IP and 1:500-1:1000 for WB
Source: Rabbit	Full Name: musashi homolog 2 (Drosophila)	Calculated MW: 35 kDa
Isotype: IgG	Observed MW: 37-40 kDa	IHC 1:10-1:100
Immunogen Catalog Number: AG1213		

Applications

Tested Applications: IHC, IP, WB, ELISA	Positive Controls:
Cited Applications: IF, IHC, IP, WB	WB : PC-12 cells, C6 cells, COLO 320 cells, MCF-7 cells
Species Specificity: human, mouse, rat	IP : MCF-7 cells,
Cited Species: human	IHC : human ovary tumor tissue, human gliomas tissue

Note-IHC: suggested antigen retrieval with TE buffer pH 9.0; (*) Alternatively, antigen retrieval may be performed with citrate buffer pH 6.0

Background Information

MSI2 is an RNA-binding protein that regulates the expression of target mRNAs at the translation level. It binds to RNA via 2 ribonucleoprotein-type RNA recognition motifs in their N-termini, to consensus motifs in mRNAs to inhibit transcription. It may play a role in the proliferation and maintenance of stem cells in the central nervous system. MSI2 can regulate normal hematopoiesis and promote aggressive myeloid leukemia

Notable Publications

Author	Pubmed ID	Journal	Application
Ling-Fei Zhang	26346275	EMBO J	WB
Zhiwei Li	29054489	Exp Cell Res	IHC
DiLshan H Beligala	31059735	Int J Dev Neurosci	

Storage

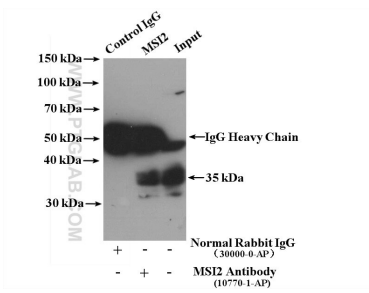
Storage:
Store at -20°C. Stable for one year after shipment.
Storage Buffer:
PBS with 0.02% sodium azide and 50% glycerol pH 7.3.
Aliquoting is unnecessary for -20°C storage

***** 20ul sizes contain 0.1% BSA**

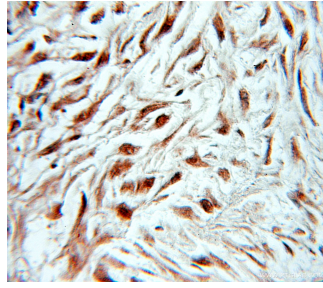
For technical support and original validation data for this product please contact:
T: 1 (888) 4PTGLAB (1-888-478-4522) (toll free in USA), or 1(312) 455-8498 (outside USA)
E: proteintech@ptglab.com
W: ptglab.com

This product is exclusively available under Proteintech Group brand and is not available to purchase from any other manufacturer.

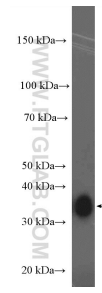
Selected Validation Data



MCF-7 cells were subjected to SDS PAGE followed by western blot with 10770-1-AP (MSI2 antibody) at dilution of 1:500.



Immunohistochemical analysis of paraffin-embedded human ovary tumor using 10770-1-AP (MSI2 antibody) at dilution of 1:10 (under 10x lens).



PC-12 cells were subjected to SDS PAGE followed by western blot with 10770-1-AP (MSI2 antibody) at dilution of 1:4000 incubated at room temperature for 1.5 hours.