

For Research Use Only

BMI1 Polyclonal antibody

Catalog Number: 10832-1-AP

Featured Product

34 Publications



Basic Information

Catalog Number:

10832-1-AP

Size:

150ul, Concentration: 350 µg/ml by Nanodrop and 267 µg/ml by Bradford method using BSA as the standard;

Source:

Rabbit

Isotype:

IgG

Immunogen Catalog Number:

AG1286

GenBank Accession Number:

BC011652

GeneID (NCBI):

648

UNIPROT ID:

P35226

Full Name:

BMI1 polycomb ring finger oncogene

Calculated MW:

37 kDa

Observed MW:

37-43 kDa

Purification Method:

Antigen affinity purification

Recommended Dilutions:

WB 1:500-1:2000

IP 0.5-4.0 ug for 1.0-3.0 mg of total protein lysate

IHC 1:20-1:200

IF 1:20-1:200

Applications

Tested Applications:

IF, IHC, IP, WB, ELISA

Cited Applications:

ChIP, CoIP, IF, IHC, WB

Species Specificity:

human, mouse

Cited Species:

human, mouse

Note-IHC: suggested antigen retrieval with TE buffer pH 9.0; (*) Alternatively, antigen retrieval may be performed with citrate buffer pH 6.0

Positive Controls:

WB : U-937 cells, HEK-293 cells, NCCIT cell, mouse brain tissue, K-562 cells

IP : U-937 cells,

IHC : human liver cancer tissue,

IF : HepG2 cells,

Background Information

BMI-1 is one of polycomb group genes, which together with Ring1 strongly enhances the E3 ubiquitin ligase activity of the Ring2 catalytic subunit. Bmi1 plays an important role in the regulation of cell proliferation and senescence through repression of the p16Ink4a and p19Arf genes and is required for maintenance of adult hematopoietic and neural stem cells. The antibody 10832-1-AP detected proteins of 45-48kDa, which may include phosphorylated isoforms of the protein.

Notable Publications

Author	Pubmed ID	Journal	Application
Chenlong Li	31558707	Cell Death Dis	WB
Hongbo Wang	33014838	Front Oncol	WB,IHC
Jin-Yan Liu	36285479	Cancer Sci	WB,IF

Storage

Storage:

Store at -20°C. Stable for one year after shipment.

Storage Buffer:

PBS with 0.02% sodium azide and 50% glycerol pH 7.3.

Aliquoting is unnecessary for -20°C storage

*** 20ul sizes contain 0.1% BSA

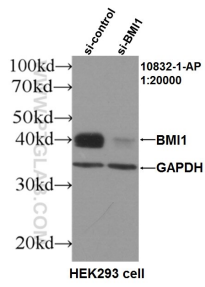
For technical support and original validation data for this product please contact:

T: 1 (888) 4PTGLAB (1-888-478-4522) (toll free in USA), or 1(312) 455-8498 (outside USA)

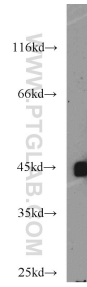
E: proteintech@ptglab.com
W: ptglab.com

This product is exclusively available under Proteintech Group brand and is not available to purchase from any other manufacturer.

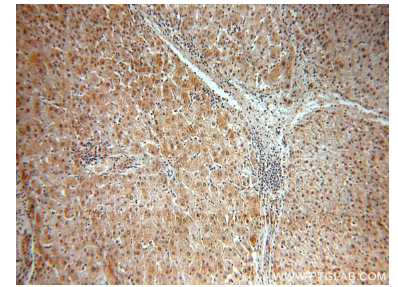
Selected Validation Data



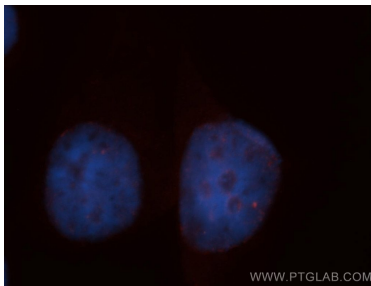
WB results of BMI antibody (10832-1-AP, 1:20000) with si-Control and si-BMI transfected HEK293 cells.



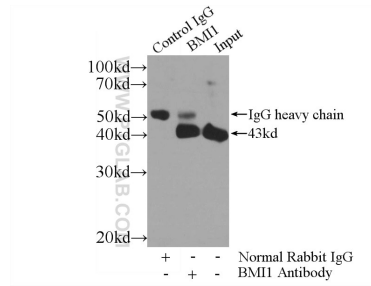
U-937 cells were subjected to SDS PAGE followed by western blot with 10832-1-AP (BMI 1 antibody) at dilution of 1:1000 incubated at room temperature for 1.5 hours.



Immunohistochemical analysis of paraffin-embedded human liver cancer using 10832-1-AP (BMI 1 antibody) at dilution of 1:50 (under 10x lens).



Immunofluorescent analysis of HepG2 cells, using 10832-1-AP and Rhodamine-labeled goat anti-rabbit IgG (red). Blue pseudocolor = DAPI (fluorescent DNA dye).



IP result of anti-BMI1 (IP:10832-1-AP, 4ug; Detection:10832-1-AP 1:500) with U-937 cells lysate 4000ug.