

For Research Use Only

CLTA Polyclonal antibody

Catalog Number: 10852-1-AP

Featured Product

18 Publications



Basic Information

Catalog Number: 10852-1-AP	GenBank Accession Number: BC019287	Purification Method: Antigen affinity purification
Size: 150ul , Concentration: 1000 µg/ml by Nanodrop;	GeneID (NCBI): 1211	Recommended Dilutions: WB 1:500-1:1000 IP 0.5-4.0 ug for IP and 1:500-1:1000 for WB
Source: Rabbit	Full Name: clathrin, light chain (Lca)	IHC 1:50-1:500 IF 1:250-1:1000
Isotype: IgG	Calculated MW: 27 kDa	
Immunogen Catalog Number: AG1299	Observed MW: 35-38 kDa	

Applications

Tested Applications: IF, IHC, IP, WB, ELISA	Positive Controls: WB : mouse brain tissue, HEK-293 cells IP : mouse brain tissue, IHC : human breast cancer tissue, IF : HepG2 cells, HEK-293 cells
Cited Applications: IF, IHC, IP, WB	
Species Specificity: human, mouse, rat	
Cited Species: human, rat, mouse, canine	

Note-IHC: suggested antigen retrieval with TE buffer pH 9.0; (*) Alternatively, antigen retrieval may be performed with citrate buffer pH 6.0

Background Information

Clathrin is the major protein of the polyhedral coat of coated pits and vesicles which entrap specific macromolecules during receptor-mediated endocytosis. The clathrin molecule has a triskelion shape. Each clathrin triskelion is composed of three identical heavy chains (180 kDa) and three light chains of two types, LCA (CLTA) and LCB (CLTB) (30-40 kDa). The light chain subunits are thought to regulate the formation or disassembly of clathrin coats. (PMID: 2445759; 8374173; 3563513)

Notable Publications

Author	Pubmed ID	Journal	Application
Mitsuo Osuga	34495704	Mol Biol Cell	WB,IF
Medendorp Klaas K	21152103	PLoS One	WB,IF,IP
Xianfang Meng	22660985	Neurogenetics	IF

Storage

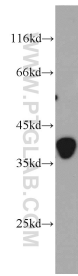
Storage:
Store at -20°C. Stable for one year after shipment.
Storage Buffer:
PBS with 0.02% sodium azide and 50% glycerol pH 7.3.
Aliquoting is unnecessary for -20°C storage

*** 20ul sizes contain 0.1% BSA

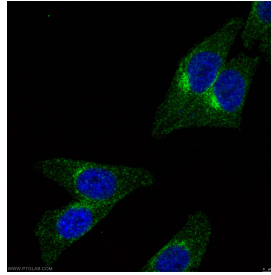
For technical support and original validation data for this product please contact:
T: 1 (888) 4PTGLAB (1-888-478-4522) (toll free in USA), or 1(312) 455-8498 (outside USA)
E: proteintech@ptglab.com
W: ptglab.com

This product is exclusively available under Proteintech Group brand and is not available to purchase from any other manufacturer.

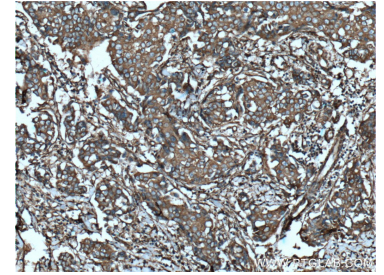
Selected Validation Data



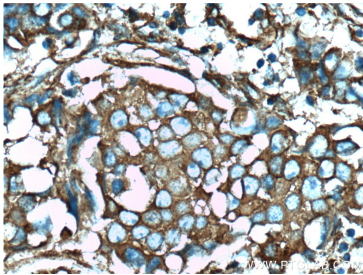
mouse brain tissue were subjected to SDS PAGE followed by western blot with 10852-1-AP (CLTA antibody) at dilution of 1:800 incubated at room temperature for 1.5 hours.



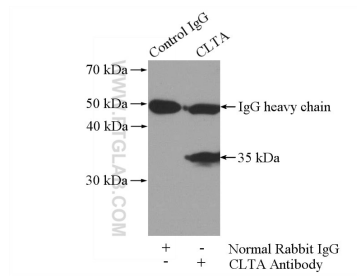
Immunofluorescent analysis of (4% PFA) fixed HepG2 cells using 10852-1-AP (CLTA antibody) at dilution of 1:500 and Alexa Fluor 488-Conjugated AffiniPure Goat Anti-Rabbit IgG(H+L).



Immunohistochemical analysis of paraffin-embedded human breast cancer tissue slide using 10852-1-AP (CLTA Antibody) at dilution of 1:200 (under 10x lens). Heat mediated antigen retrieval with Tris-EDTA buffer (pH 9.0).



Immunohistochemical analysis of paraffin-embedded human breast cancer tissue slide using 10852-1-AP (CLTA Antibody) at dilution of 1:200 (under 40x lens). Heat mediated antigen retrieval with Tris-EDTA buffer (pH 9.0).



IP Result of anti-CLTA (IP:10852-1-AP, 4ug; Detection:10852-1-AP 1:800) with mouse brain tissue lysate 4000ug.