

For Research Use Only

PITX1 Polyclonal antibody

Catalog Number: 10873-1-AP

Featured Product

6 Publications



Basic Information

Catalog Number: 10873-1-AP	GenBank Accession Number: BC009412	Purification Method: Antigen affinity purification
Size: 150ul, Concentration: 700 µg/ml by Nanodrop and 380 µg/ml by Bradford method using BSA as the standard;	GeneID (NCBI): 5307	Recommended Dilutions: WB 1:500-1:2000 IP 0.5-4.0 ug for IP and 1:500-1:2000 for WB
Source: Rabbit	Full Name: paired-like homeodomain 1	IHC 1:20-1:200
Isotype: IgG	Calculated MW: 34 kDa	IF 1:10-1:100
Immunogen Catalog Number: AG1303	Observed MW: 38-40 kDa	

Applications

Tested Applications: IF, IHC, IP, WB, ELISA	Positive Controls: WB : HeLa cells, A431 cells, MCF-7 cells
Cited Applications: IF, IHC, WB	IP : HeLa cells,
Species Specificity: human	IHC : human tonsillitis tissue, human colon tissue
Cited Species: human, rat, mouse	IF : HepG2 cells,

Note-IHC: suggested antigen retrieval with TE buffer pH 9.0; (*) Alternatively, antigen retrieval may be performed with citrate buffer pH 6.0

Background Information

PITX1, also named as Pituitary homeobox 1 or BFT, is a 314 amino acid protein, which contains one homeobox DNA-binding domain and belongs to the paired homeobox family. Bicoid subfamily. PITX1 localizes in the nucleus and may play a role in the development of anterior structures, and in particular, the brain and facies and in specifying the identity or structure of hindlimb.

Notable Publications

Author	Pubmed ID	Journal	Application
Yu Jin	32905855	Int J Biochem Cell Biol	WB,IHC
Xiaomei He	34614161	Nucleic Acids Res	WB
Joshua E Burda	35614216	Nature	IHC

Storage

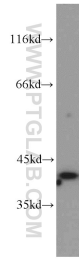
Storage:
Store at -20°C. Stable for one year after shipment.
Storage Buffer:
PBS with 0.02% sodium azide and 50% glycerol pH 7.3.
Aliquoting is unnecessary for -20°C storage

*** 20ul sizes contain 0.1% BSA

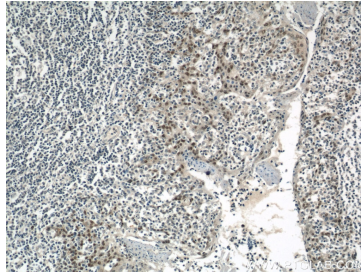
For technical support and original validation data for this product please contact:
T: 1 (888) 4PTGLAB (1-888-478-4522) (toll free in USA), or 1(312) 455-8498 (outside USA)
E: proteintech@ptglab.com
W: ptglab.com

This product is exclusively available under Proteintech Group brand and is not available to purchase from any other manufacturer.

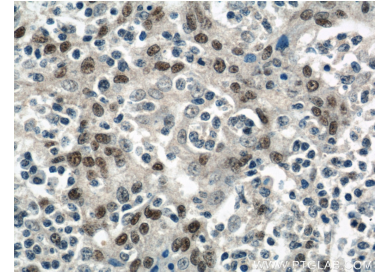
Selected Validation Data



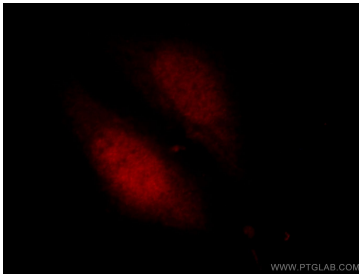
HeLa cells were subjected to SDS PAGE followed by western blot with 10873-1-AP (PITX1 antibody) at dilution of 1:800 incubated at room temperature for 1.5 hours.



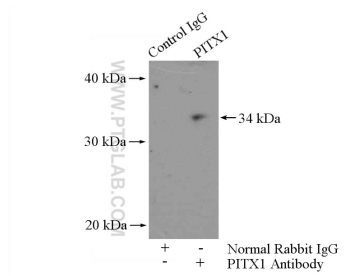
Immunohistochemical analysis of paraffin-embedded human tonsillitis using 10873-1-AP (PITX1 antibody) at dilution of 1:50 (under 10x lens).



Immunohistochemical analysis of paraffin-embedded human tonsillitis using 10873-1-AP (PITX1 antibody) at dilution of 1:50 (under 40x lens).



Immunofluorescent analysis of HepG2 cells, using PITX1 antibody 10873-1-AP at 1:25 dilution and Rhodamine-labeled goat anti-rabbit IgG (red).



IP Result of anti-PITX1 (IP:10873-1-AP, 4ug; Detection:10873-1-AP 1:1000) with HeLa cells lysate 1200ug.