

For Research Use Only

DDX3 Polyclonal antibody

Catalog Number: 11115-1-AP

Featured Product

24 Publications



Basic Information

Catalog Number: 11115-1-AP	GenBank Accession Number: BC011819	Purification Method: Antigen affinity purification
Size: 150ul, Concentration: 400 µg/ml by Nanodrop;	GeneID (NCBI): 1654	Recommended Dilutions: WB 1:1000-1:8000 IP 0.5-4.0 µg for 1.0-3.0 mg of total protein lysate
Source: Rabbit	Full Name: DEAD (Asp-Glu-Ala-Asp) box polypeptide 3, X-linked	IHC 1:50-1:500 IF 1:200-1:800
Isotype: IgG	Calculated MW: 73 kDa	
Immunogen Catalog Number: AG1614	Observed MW: 73 kDa	

Applications

Tested Applications:
FC, IF, IHC, IP, WB, ELISA

Cited Applications:
CoIP, IF, IHC, RIP, WB

Species Specificity:
human, mouse, rat

Cited Species:
human, rat, mouse

Note-IHC: suggested antigen retrieval with TE buffer pH 9.0; (*) Alternatively, antigen retrieval may be performed with citrate buffer pH 6.0

Positive Controls:

WB: HeLa cells, NIH/3T3 cells, HepG2 cells, mouse liver tissue, HT-1080 cells, mouse brain tissue, PC-12 cells, K-562 cells, C6 cells, rat brain tissue

IP: HeLa cells,

IHC: human malignant melanoma tissue, human cervical cancer tissue

IF: HepG2 cells,

Background Information

DDX3X, also named as DBX, DDX3 and HLP2, belongs to the DEAD box helicase family and DDX3/DED1 subfamily. It is ATP-dependent RNA helicase. DDX3X acts as a cofactor for XPO1-mediated nuclear export of incompletely spliced HIV-1 Rev RNAs. It is also involved in HIV-1 replication. DDX3X interacts specifically with hepatitis C virus core protein resulting in a change in intracellular location. 73 kDa is the target band. 60-65 kDa is some other isoform. This antibody can bind both DDX3X and DDX3Y for the close sequences.

Notable Publications

Author	Pubmed ID	Journal	Application
DANDAN FENG	34650637	Exp Ther Med	WB
Yifei Zhou	36242920	Biochem Biophys Res Commun	WB,IHC
Weiwei Cheng	31587919	Neuron	WB

Storage

Storage:

Store at -20°C. Stable for one year after shipment.

Storage Buffer:

PBS with 0.02% sodium azide and 50% glycerol pH 7.3.

Aliquoting is unnecessary for -20°C storage

*** 20ul sizes contain 0.1% BSA

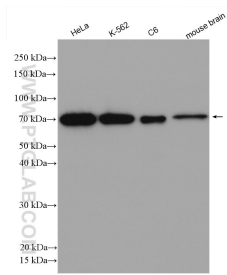
For technical support and original validation data for this product please contact:

T: 1 (888) 4PTGLAB (1-888-478-4522) (toll free in USA), or 1(312) 455-8498 (outside USA)

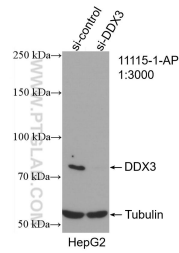
E: proteintech@ptglab.com
W: ptglab.com

This product is exclusively available under Proteintech Group brand and is not available to purchase from any other manufacturer.

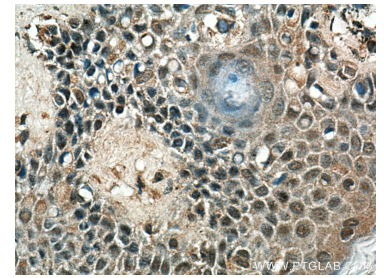
Selected Validation Data



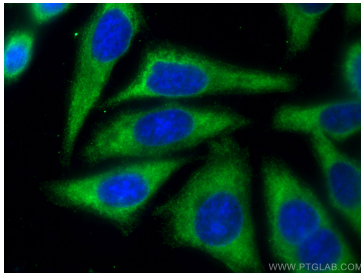
Various lysates were subjected to SDS PAGE followed by western blot with 11115-1-AP (DDX3 antibody) at dilution of 1:4000 incubated at room temperature for 1.5 hours.



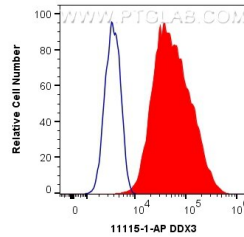
WB result of DDX3 antibody (11115-1-AP; 1:3000; incubated at room temperature for 1.5 hours) with sh-Control and sh-DDX3 transfected HepG2 cells.



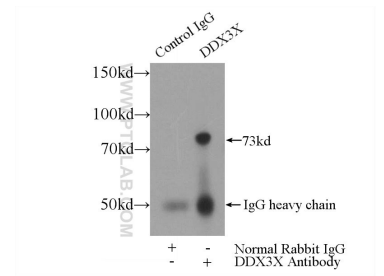
Immunohistochemical analysis of paraffin-embedded human malignant melanoma tissue slide using 11115-1-AP (DDX3 antibody) at dilution of 1:200 (under 40x lens)..



Immunofluorescent analysis of (-20°C Ethanol) fixed HepG2 cells using DDX3 antibody (11115-1-AP) at dilution of 1:400 and CoraLite@488-Conjugated AffiniPure Goat Anti-Rabbit IgG(H+L).



1x10⁶ HeLa cells were intracellularly stained with 0.4 ug Anti-Human DDX3 (11115-1-AP) and CoraLite@488-Conjugated AffiniPure Goat Anti-Rabbit IgG(H+L) at dilution 1:1000 (red), or 0.4 ug Isotype Control. Cells were fixed with 4% PFA and permeabilized with Flow Cytometry Perm Buffer (PF00011-C).



IP Result of anti-DDX3 (IP:11115-1-AP, 4ug; Detection:11115-1-AP 1:300) with HeLa cells lysate 2480ug.