

For Research Use Only

Gamma Catenin Polyclonal antibody



Catalog Number: 11146-1-AP **5 Publications**

Basic Information

| | | |
|--|--|--|
| Catalog Number: 11146-1-AP | GenBank Accession Number: BC011865 | Purification Method: Antigen affinity purification |
| Size: 150ul , Concentration: 500 µg/ml by Nanodrop and 267 µg/ml by Bradford method using BSA as the standard; | GeneID (NCBI): 3728 | Recommended Dilutions: WB 1:500-1:2000 IP 0.5-4.0 ug for 1.0-3.0 mg of total protein lysate IHC 1:20-1:200 |
| Source: Rabbit | Full Name: junction plakoglobin | |
| Isotype: IgG | Calculated MW: 82 kDa | |
| Immunogen Catalog Number: AG1627 | Observed MW: 82 kDa | |

Applications

| | |
|---|--|
| Tested Applications: IHC, IP, WB, ELISA | Positive Controls: |
| Cited Applications: IF, IP, WB | WB: mouse heart tissue, human heart tissue, HeLa cells, T-47D cells, A431 cells |
| Species Specificity: human, mouse, rat | IP: HT-29 cells, |
| Cited Species: human, rat, mouse | IHC: human pancreas cancer tissue, human breast cancer tissue, human colon cancer tissue, human skin tissue |

Note-IHC: suggested antigen retrieval with TE buffer pH 9.0; (*) Alternatively, antigen retrieval may be performed with citrate buffer pH 6.0

Background Information

Plakoglobin (γ -catenin), a member of the Armadillo proteins, plays important roles in cell adhesion with α -catenin and β -catenin, is involved in Wnt signaling, and is translocated into the nucleus and binds LEF1. Plakoglobin is a major cytoplasmic component of both desmosomes and adherens junctions, and is the only known constituent common to submembranous plaques in both of these structures, which are located at the intercalated disc (ICD) of cardiomyocytes. Plakoglobin links cadherins to the actin cytoskeleton. Mutations in plakoglobin are associated with arrhythmic right ventricular dysplasia and Pemphigus vulgaris.

Notable Publications

| Author | Pubmed ID | Journal | Application |
|-----------|-----------|----------------------------|-------------|
| Bing Sun | 27684953 | PLoS One | WB |
| M Shriver | 25381817 | Oncogene | WB |
| Yili Fang | 32560811 | Biochem Biophys Res Commun | WB |

Storage

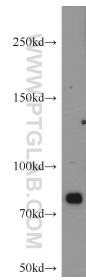
Storage:
Store at -20°C. Stable for one year after shipment.
Storage Buffer:
PBS with 0.02% sodium azide and 50% glycerol pH 7.3.
Aliquoting is unnecessary for -20°C storage

*** 20ul sizes contain 0.1% BSA

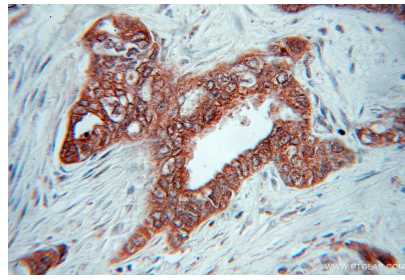
For technical support and original validation data for this product please contact:
T: 1 (888) 4PTGLAB (1-888-478-4522) (toll free in USA), or 1(312) 455-8498 (outside USA)
E: proteintech@ptglab.com
W: ptglab.com

This product is exclusively available under Proteintech Group brand and is not available to purchase from any other manufacturer.

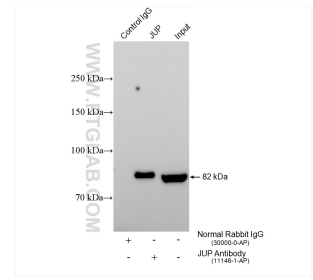
Selected Validation Data



mouse heart tissue were subjected to SDS PAGE followed by western blot with 11146-1-AP (Plakoglobin/gamma catenin antibody at dilution of 1:1000 incubated at room temperature for 1.5 hours.



Immunohistochemical analysis of paraffin-embedded human pancreas cancer using 11146-1-AP (Plakoglobin/gamma catenin antibody) at dilution of 1:50 (under 10x lens).



IP result of anti-Gamma Catenin(IP:11146-1-AP, 4ug; Detection:11146-1-AP 1:1000) with HT-29 cells lysate 1040 ug.