

For Research Use Only

# PDI Polyclonal antibody

Catalog Number: 11245-1-AP

Featured Product

49 Publications



## Basic Information

<b>Catalog Number:</b> 11245-1-AP	<b>GenBank Accession Number:</b> BC014504	<b>Purification Method:</b> Antigen affinity purification
<b>Size:</b> 150ul, Concentration: 850 µg/ml by Nanodrop;	<b>GeneID (NCBI):</b> 5034	<b>Recommended Dilutions:</b> WB 1:500-1:2000 IP 0.5-4.0 ug for 1.0-3.0 mg of total protein lysate IHC 1:50-1:500 IF 1:200-1:800
<b>Source:</b> Rabbit	<b>Full Name:</b> prolyl 4-hydroxylase, beta polypeptide	
<b>Isotype:</b> IgG	<b>Calculated MW:</b> 57 kDa	
<b>Immunogen Catalog Number:</b> AG1747	<b>Observed MW:</b> 57 kDa	

## Applications

**Tested Applications:**  
FC, IF, IHC, IP, WB, ELISA

**Cited Applications:**  
FC, IF, IHC, WB

**Species Specificity:**  
human, mouse, rat

**Cited Species:**  
human, rat, mouse, monkey, pig

**Note-IHC: suggested antigen retrieval with TE buffer pH 9.0; (\*) Alternatively, antigen retrieval may be performed with citrate buffer pH 6.0**

**Positive Controls:**

**WB:** COLO 320 cells, HEK-293 cells, HepG2 cells, mouse heart tissue, rat brain tissue

**IP:** HepG2 cells,

**IHC:** human prostate cancer tissue,

**IF:** HepG2 cells,

## Background Information

PDIA1 (Protein disulfide-isomerase) is also named as ERBA2L, PDI, P4HB, PO4DB. It is a multifunctional protein that catalyzes the formation, breakage and rearrangement of disulfide bonds. In some cell types, it seems to be secreted or associated with the plasma membrane, where it undergoes constant shedding and replacement from intracellular sources. It can exist as homodimer and monomers and homotetramers may also occur (PMID:12095988).

## Notable Publications

Author	Pubmed ID	Journal	Application
Liguo Yang	32943607	Cell Death Dis	IF
Linyu Sun	34555354	Mol Cell	IF
Nirav Florian Chhabra	34487921	Mol Metab	WB

## Storage

**Storage:**

Store at -20°C. Stable for one year after shipment.

**Storage Buffer:**

PBS with 0.02% sodium azide and 50% glycerol pH 7.3.

Aliquoting is unnecessary for -20°C storage

\*\*\* 20ul sizes contain 0.1% BSA

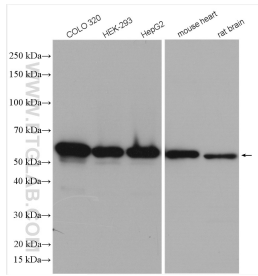
For technical support and original validation data for this product please contact:

T: 1 (888) 4PTGLAB (1-888-478-4522) (toll free in USA), or 1(312) 455-8498 (outside USA)

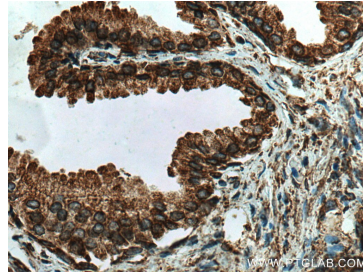
E: proteintech@ptglab.com  
W: ptglab.com

This product is exclusively available under Proteintech Group brand and is not available to purchase from any other manufacturer.

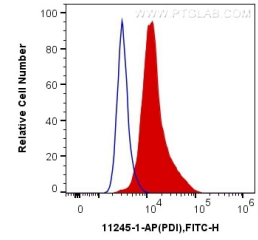
## Selected Validation Data



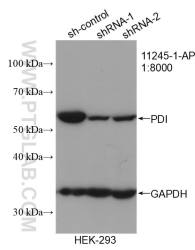
Various lysates were subjected to SDS PAGE followed by western blot with 11245-1-AP (PDI antibody) at dilution of 1:1000 incubated at room temperature for 1.5 hours.



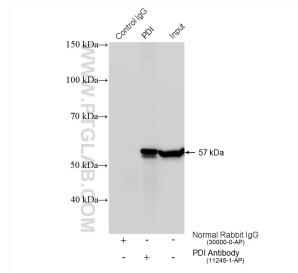
Immunohistochemical analysis of paraffin-embedded human prostate cancer tissue slide using 11245-1-AP (PDI antibody) at dilution of 1:200 (under 40x lens). Heat mediated antigen retrieval with Tris-EDTA buffer (pH 9.0).



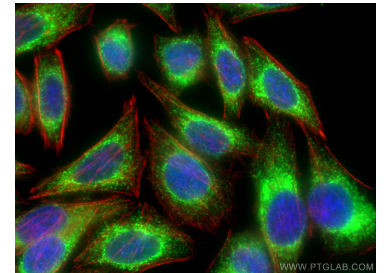
$1 \times 10^6$  HeLa cells were intracellularly stained with 0.4 ug Anti-Human PDI (11245-1-AP) and CoraLite®488-Conjugated AffiniPure Goat Anti-Rabbit IgG(H+L) at dilution 1:1000 (red), or 0.4 ug Control Antibody. Cells were fixed with 4% PFA and permeabilized with Flow Cytometry Perm Buffer (PF00011-C).



WB result of PDI antibody (11245-1-AP; 1:8000; incubated at room temperature for 1.5 hours) with sh-Control and sh-PDI transfected HEK-293 cells.



IP result of anti-PDI (IP:11245-1-AP, 4ug; Detection:11245-1-AP 1:2000) with HepG2 cells lysate 2600 ug.



Immunofluorescent analysis of (-20°C Ethanol) fixed HepG2 cells using PDI antibody (11245-1-AP) at dilution of 1:400 and CoraLite®488-Conjugated AffiniPure Goat Anti-Rabbit IgG(H+L), CL594-Phalloidin (red). DAPI (blue).