

For Research Use Only

# RAB35 Polyclonal antibody

Catalog Number: 11329-2-AP

Featured Product

41 Publications



## Basic Information

### Catalog Number:

11329-2-AP

### Size:

150ul, Concentration: 350 µg/ml by Nanodrop;

### Source:

Rabbit

### Isotype:

IgG

### Immunogen Catalog Number:

AG1872

### GenBank Accession Number:

BC015931

### GeneID (NCBI):

11021

### UNIPROT ID:

Q15286

### Full Name:

RAB35, member RAS oncogene family

### Calculated MW:

201 aa, 23 kDa

### Observed MW:

23 kDa

### Purification Method:

Antigen affinity purification

### Recommended Dilutions:

WB 1:1000-1:6000

IP 0.5-4.0 µg for 1.0-3.0 mg of total protein lysate

IHC 1:50-1:500

IF 1:200-1:800

## Applications

### Tested Applications:

WB, IP, IF, IHC, ELISA

### Cited Applications:

WB, IP, IF, IHC, CoIP

### Species Specificity:

human, mouse, rat

### Cited Species:

human, rat, mouse, pig, canine

**Note-IHC: suggested antigen retrieval with TE buffer pH 9.0; (\*) Alternatively, antigen retrieval may be performed with citrate buffer pH 6.0**

### Positive Controls:

WB : A431 cells, A375 cells, human brain tissue, HeLa cells, MCF-7 cells, RAW 264.7 cells, mouse brain tissue, rat brain tissue

IP : mouse brain tissue,

IHC : human breast cancer tissue, human liver tissue, human brain tissue

IF : U-87 MG cells,

## Background Information

RAB35 is a member of the small GTPase superfamily. Like the other Rab proteins, RAB35 has 2 consecutive cysteine residues at its C terminus, and this region is thought to be involved in membrane association. Rab35 is found on the cell surface and endosomes, where it has been proposed to play a role in recycling of the transferrin and other receptors.

## Notable Publications

Author	Pubmed ID	Journal	Application
Akane Imai	21832089	J Biol Chem	WB
Sara R Guerreiro	36056171	Mol Psychiatry	WB
Elisabetta Argenzio	25344254	J Cell Sci	WB

## Storage

### Storage:

Store at -20°C. Stable for one year after shipment.

### Storage Buffer:

PBS with 0.02% sodium azide and 50% glycerol pH 7.3.

Aliquoting is unnecessary for -20°C storage

\*\*\* 20ul sizes contain 0.1% BSA

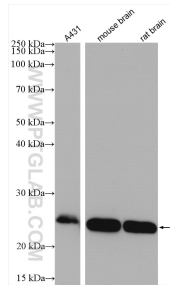
For technical support and original validation data for this product please contact:

T: 1 (888) 4PTGLAB (1-888-478-4522) (toll free in USA), or 1(312) 455-8498 (outside USA)

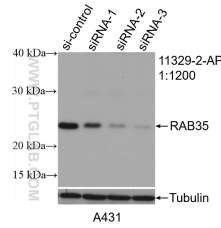
E: proteintech@ptglab.com  
W: ptglab.com

This product is exclusively available under Proteintech Group brand and is not available to purchase from any other manufacturer.

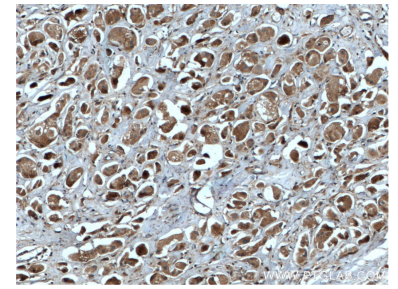
## Selected Validation Data



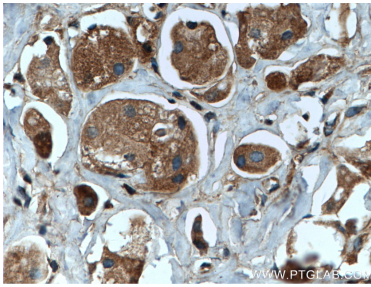
Various lysates were subjected to SDS PAGE followed by western blot with 11329-2-AP (RAB35 antibody) at dilution of 1:3000 incubated at room temperature for 1.5 hours.



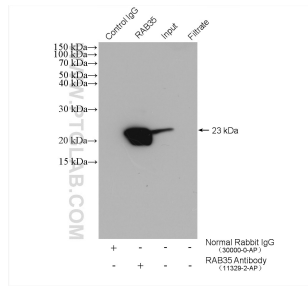
WB result of RAB35 antibody (11329-2-AP; 1:1200; incubated at room temperature for 1.5 hours) with sh-Control and sh-RAB35 transfected A431 cells.



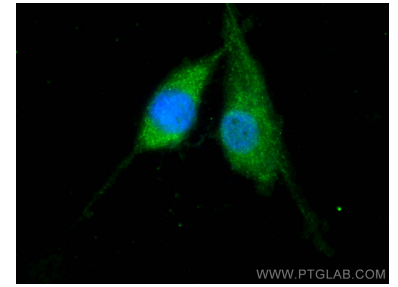
Immunohistochemical analysis of paraffin-embedded human breast cancer tissue slide using 11329-2-AP (RAB35 antibody) at dilution of 1:200 (under 10x lens. Heat mediated antigen retrieval with Tris-EDTA buffer (pH 9.0).



Immunohistochemical analysis of paraffin-embedded human breast cancer tissue slide using 11329-2-AP (RAB35 antibody) at dilution of 1:200 (under 40x lens. Heat mediated antigen retrieval with Tris-EDTA buffer (pH 9.0).



IP result of anti-RAB35 (IP:11329-2-AP, 4ug; Detection:11329-2-AP 1:600) with mouse brain tissue lysate 2400 ug.



Immunofluorescent analysis of (-20°C Ethanol) fixed U-87 MG cells using RAB35 antibody (11329-2-AP) at dilution of 1:400 and CoraLite@488-Conjugated AffiniPure Goat Anti-Rabbit IgG(H+L).