

For Research Use Only

RYBP Polyclonal antibody

Catalog Number: 11365-1-AP **1 Publications**



Basic Information

Catalog Number: 11365-1-AP	GenBank Accession Number: BC014959	Purification Method: Antigen affinity purification
Size: 150ul , Concentration: 400 µg/ml by Nanodrop and 300 µg/ml by Bradford method using BSA as the standard;	GeneID (NCBI): 23429	Recommended Dilutions: WB 1:500-1:1000 IP 0.5-4.0 ug for IP and 1:200-1:1000 for WB
Source: Rabbit	Full Name: RING1 and YY1 binding protein	
Isotype: IgG	Calculated MW: 228 aa, 25 kDa	
Immunogen Catalog Number: AG1908	Observed MW: 32 kDa	

Applications

Tested Applications: IP, WB, ELISA	Positive Controls: WB : K-562 cells, IP : mouse spleen tissue,
Cited Applications: WB	
Species Specificity: human, mouse, rat	
Cited Species: human	

Background Information

Polycomb repressive complexes (PRCs) are important chromatin regulators of embryonic stem (ES) cell function [PMID:22269950]. RYBP binds Polycomb H2A monoubiquitin ligases Ring1A and Ring1B and has been suggested to assist PRC localization to their targets. RYBP, firstly identified as a direct interactor with Ring1A, acts as transcriptional repressor in reporter assays, both in tissue culture cells and in the fly [PMID:16125914]

Notable Publications

Author	Pubmed ID	Journal	Application
Xianchun Lan	35933409	Nat Commun	WB

Storage

Storage:
Store at -20°C. Stable for one year after shipment.
Storage Buffer:
PBS with 0.02% sodium azide and 50% glycerol pH 7.3.
Aliquoting is unnecessary for -20°C storage

*** 20ul sizes contain 0.1% BSA

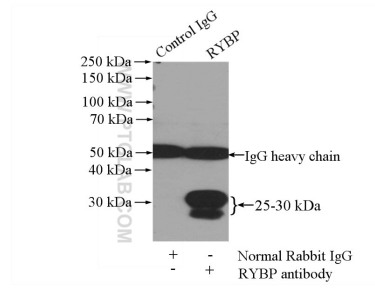
For technical support and original validation data for this product please contact:
T: 1 (888) 4PTGLAB (1-888-478-4522) (toll free in USA), or 1(312) 455-8498 (outside USA)
E: proteintech@ptglab.com
W: ptglab.com

This product is exclusively available under Proteintech Group brand and is not available to purchase from any other manufacturer.

Selected Validation Data



K-562 cells were subjected to SDS PAGE followed by western blot with 11365-1-AP (RYBP antibody) at dilution of 1:500 incubated at room temperature for 1.5 hours.



IP Result of anti-RYBP (IP:11365-1-AP, 4ug; Detection:11365-1-AP 1:300) with mouse spleen tissue lysate 4000ug.