

For Research Use Only

FH Polyclonal antibody

Catalog Number: 11375-1-AP **14 Publications**



Basic Information

Catalog Number: 11375-1-AP	GenBank Accession Number: BC003108	Purification Method: Antigen affinity purification
Size: 150ul, Concentration: 450 µg/ml by Nanodrop;	GeneID (NCBI): 2271	Recommended Dilutions: WB 1:1000-1:4000
Source: Rabbit	UNIPROT ID: P07954	IP 0.5-4.0 ug for 1.0-3.0 mg of total protein lysate
Isotype: IgG	Full Name: fumarate hydratase	IHC 1:250-1:1000
Immunogen Catalog Number: AG1934	Calculated MW: 510 aa, 55 kDa	IF 1:50-1:500
	Observed MW: 45-50 kDa	

Applications

Tested Applications: WB, IP, IF, IHC, ELISA	Positive Controls:
Cited Applications: WB, IF, IHC	WB : HEK-293 cells, human placenta tissue, HepG2 cells, L02 cells, NIH/3T3 cells, mouse liver tissue, rat liver tissue, HeLa cells, Jurkat cells, C6 cells
Species Specificity: human, mouse, rat	IP : mouse liver tissue,
Cited Species: human, rat, mouse, Caenorhabditis elegans	IHC : human placenta tissue, human ovary tumor tissue
Note-IHC: <i>suggested antigen retrieval with TE buffer pH 9.0; (*) Alternatively, antigen retrieval may be performed with citrate buffer pH 6.0</i>	IF : HeLa cells,

Background Information

Fumarate hydratase, or fumarase, is an enzymatic component of the tricarboxylic acid cycle, catalyzing the conversion of fumarate to malate. It belongs to the class-II fumarase/aspartase family. This protein has 2 isoforms produced by alternative initiation.

Notable Publications

Author	Pubmed ID	Journal	Application
Teresa W-M Fan	36150727	J Immunol	
Yongyan Sun	30307357	Int J Radiat Biol	WB
Xiaoyu Ma	25301052	Nat Commun	WB

Storage

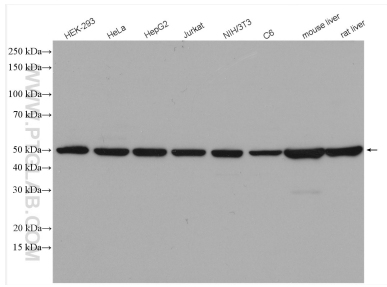
Storage:
Store at -20°C. Stable for one year after shipment.
Storage Buffer:
PBS with 0.02% sodium azide and 50% glycerol pH 7.3.
Aliquoting is unnecessary for -20°C storage

*** 20ul sizes contain 0.1% BSA

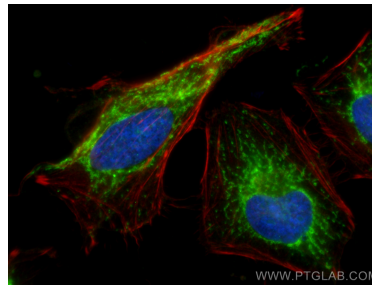
For technical support and original validation data for this product please contact:
T: 1 (888) 4PTGLAB (1-888-478-4522) (toll free in USA), or 1(312) 455-8498 (outside USA)
E: proteintech@ptglab.com
W: ptglab.com

This product is exclusively available under Proteintech Group brand and is not available to purchase from any other manufacturer.

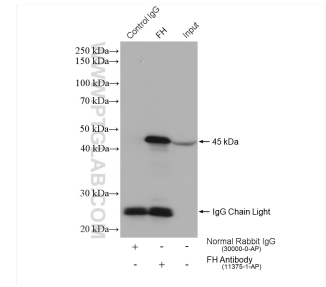
Selected Validation Data



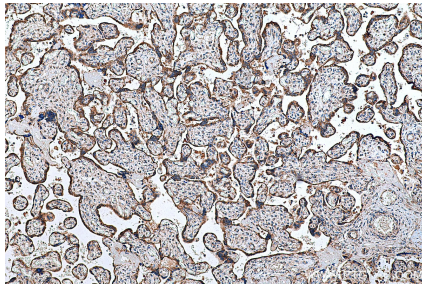
Various lysates were subjected to SDS PAGE followed by western blot with 11375-1-AP (FH antibody) at dilution of 1:2000 incubated at room temperature for 1.5 hours.



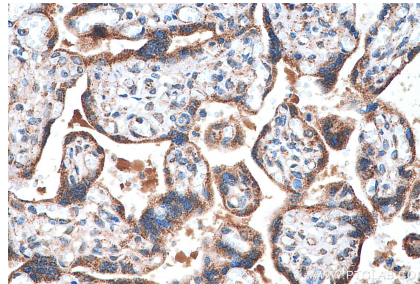
Immunofluorescent analysis of (-20°C Ethanol) fixed HeLa cells using FH antibody (11375-1-AP) at dilution of 1:200 and CoraLite@488-Conjugated AffiniPure Goat Anti-Rabbit IgG(H+L), CL594-Phalloidin (red).



IP result of anti-FH (IP:11375-1-AP, 4ug; Detection:11375-1-AP 1:8000) with mouse liver tissue lysate 3040 ug.



Immunohistochemical analysis of paraffin-embedded human placenta tissue slide using 11375-1-AP (FH antibody) at dilution of 1:500 (under 10x lens). Heat mediated antigen retrieval with Tris-EDTA buffer (pH 9.0).



Immunohistochemical analysis of paraffin-embedded human placenta tissue slide using 11375-1-AP (FH antibody) at dilution of 1:500 (under 40x lens). Heat mediated antigen retrieval with Tris-EDTA buffer (pH 9.0).