

For Research Use Only

# TMED2 Polyclonal antibody

Catalog Number: 11981-1-AP **7 Publications**



## Basic Information

<b>Catalog Number:</b> 11981-1-AP	<b>GenBank Accession Number:</b> BC025957	<b>Purification Method:</b> Antigen affinity purification
<b>Size:</b> 150ul , Concentration: 260 µg/ml by Nanodrop and 200 µg/ml by Bradford method using BSA as the standard;	<b>GeneID (NCBI):</b> 10959	<b>Recommended Dilutions:</b> WB 1:1000-1:4000 IHC 1:20-1:200
<b>Source:</b> Rabbit	<b>UNIPROT ID:</b> Q15363	
<b>Isotype:</b> IgG	<b>Full Name:</b> transmembrane emp24 domain trafficking protein 2	
<b>Immunogen Catalog Number:</b> AG2607	<b>Calculated MW:</b> 201 aa, 23 kDa	
	<b>Observed MW:</b> 20-23 kDa	

## Applications

### Tested Applications:

WB, IHC, ELISA

### Cited Applications:

WB, IF, IHC

### Species Specificity:

human, mouse, rat

### Cited Species:

human, mouse

**Note-IHC: suggested antigen retrieval with TE buffer pH 9.0; (\*) Alternatively, antigen retrieval may be performed with citrate buffer pH 6.0**

### Positive Controls:

WB : HEK-293 cells, mouse pancreas tissue, mouse skin tissue, mouse liver tissue, HeLa cells, rat kidney tissue

IHC : human pancreas cancer tissue,

## Notable Publications

Author	Pubmed ID	Journal	Application
Shulin Li	34561617	Cell Res	WB
Xihua Yue	34493279	BMC Biol	WB
Hak Park	35748162	Adv Sci (Weinh)	WB

## Storage

### Storage:

Store at -20°C. Stable for one year after shipment.

### Storage Buffer:

PBS with 0.02% sodium azide and 50% glycerol pH 7.3.

Aliquoting is unnecessary for -20°C storage

\*\*\* 20ul sizes contain 0.1% BSA

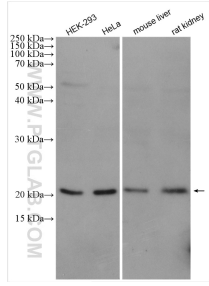
For technical support and original validation data for this product please contact:

T: 1 (888) 4PTGLAB (1-888-478-4522) (toll free in USA), or 1(312) 455-8498 (outside USA)

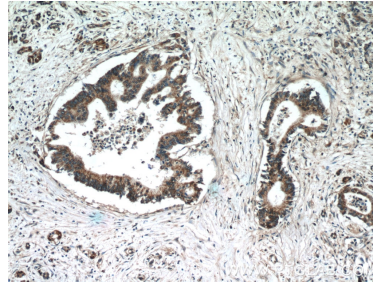
E: [proteintech@ptglab.com](mailto:proteintech@ptglab.com)  
W: [ptglab.com](http://ptglab.com)

**This product is exclusively available under Proteintech Group brand and is not available to purchase from any other manufacturer.**

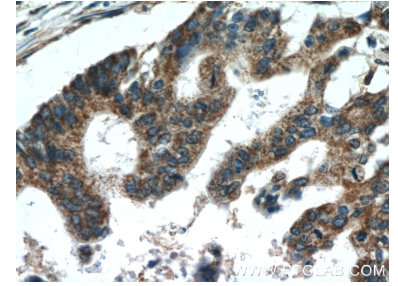
## Selected Validation Data



Various lysates were subjected to SDS PAGE followed by western blot with 11981-1-AP (TMED2 antibody) at dilution of 1:4000 incubated at room temperature for 1.5 hours.



Immunohistochemical analysis of paraffin-embedded human pancreas cancer tissue slide using 11981-1-AP (TMED2 Antibody) at dilution of 1:50 (under 10x lens).



Immunohistochemical analysis of paraffin-embedded human pancreas cancer tissue slide using 11981-1-AP (TMED2 Antibody) at dilution of 1:50 (under 40x lens).