

For Research Use Only

DPEP1 Polyclonal antibody

Catalog Number: 12222-1-AP

Featured Product

5 Publications



Basic Information

Catalog Number: 12222-1-AP	GenBank Accession Number: BC017023	Purification Method: Antigen affinity purification
Size: 150ul , Concentration: 400 µg/ml by Nanodrop;	GeneID (NCBI): 1800	Recommended Dilutions: WB 1:1000-1:5000
Source: Rabbit	Full Name: dipeptidase 1 (renal)	
Isotype: IgG	Calculated MW: 411 aa, 46 kDa	
Immunogen Catalog Number: AG2907	Observed MW: 46 kDa	

Applications

Tested Applications: WB, ELISA	Positive Controls: WB : HepG2 cells, mouse liver tissue, HEK-293 cells
Cited Applications: FC, IHC, WB	
Species Specificity: human, mouse, rat	
Cited Species: human, mouse, monkey	

Background Information

DPEP1(Dipeptidase 1) is also named as MDP, RDP and belongs to the peptidase M19 family. It is a glycoprotein that plays an important role in the regulation of leukotriene activity. DPEP1 converts Leukotriene D4 to Leukotriene E4.

Notable Publications

Author	Pubmed ID	Journal	Application
Arthur Lau	29863495	J Clin Invest	
Saurav Roy Choudhury	31442408	Cell	WB
Anne von Mässenhausen	35108055	Sci Adv	WB,FC

Storage

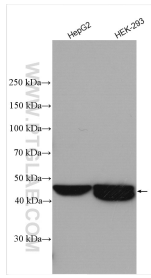
Storage:
Store at -20°C. Stable for one year after shipment.
Storage Buffer:
PBS with 0.02% sodium azide and 50% glycerol pH 7.3.
Aliquoting is unnecessary for -20°C storage

*** 20ul sizes contain 0.1% BSA

For technical support and original validation data for this product please contact:
T: 1 (888) 4PTGLAB (1-888-478-4522) (toll free in USA), or 1(312) 455-8498 (outside USA)
E: proteintech@ptglab.com
W: ptglab.com

This product is exclusively available under Proteintech Group brand and is not available to purchase from any other manufacturer.

Selected Validation Data



Various lysates were subjected to SDS PAGE followed by western blot with 12222-1-AP (DPEP1 antibody) at dilution of 1:2500 incubated at room temperature for 1.5 hours.