

For Research Use Only

# NDP52 Polyclonal antibody

Catalog Number: 12229-1-AP

Featured Product

44 Publications



## Basic Information

<b>Catalog Number:</b> 12229-1-AP	<b>GenBank Accession Number:</b> BC015893	<b>Purification Method:</b> Antigen affinity purification
<b>Size:</b> 150ul , Concentration: 600 µg/ml by Nanodrop and 300 µg/ml by Bradford method using BSA as the standard;	<b>GeneID (NCBI):</b> 10241	<b>Recommended Dilutions:</b> WB 1:500-1:2000 IP 0.5-4.0 ug for 1.0-3.0 mg of total protein lysate IHC 1:50-1:500 IF 1:200-1:800
<b>Source:</b> Rabbit	<b>Full Name:</b> calcium binding and coiled-coil domain 2	
<b>Isotype:</b> IgG	<b>Calculated MW:</b> 446 aa, 52 kDa	
<b>Immunogen Catalog Number:</b> AG2866	<b>Observed MW:</b> 52 kDa	

## Applications

**Tested Applications:**  
IF, IHC, IP, WB, ELISA

**Cited Applications:**  
IF, IP, WB

**Species Specificity:**  
human, mouse, rat

**Cited Species:**  
human, rat, mouse, pig

**Note-IHC: suggested antigen retrieval with TE buffer pH 9.0; (\*) Alternatively, antigen retrieval may be performed with citrate buffer pH 6.0**

**Positive Controls:**

**WB :** HeLa cells, rat skeletal muscle tissue

**IP :** HeLa cells,

**IHC :** human ovary tumor tissue, human skeletal muscle tissue

**IF :** HeLa cells,

## Background Information

NDP52, also named as CALCOCO2, is an autophagy receptor. It plays a role in ruffle formation and actin cytoskeleton organization. Mouse/Rat NDP52 has some isoforms with MW 28-40 kDa and 67 kDa. Human NDP52 has some isoforms with MW 43-47 kDa and 52-55 kDa,

## Notable Publications

Author	Pubmed ID	Journal	Application
Shouheng Jin	28965816	Mol Cell	WB
Sebastian Boland	36207292	Nat Commun	WB
Jureepon Roboon	36274991	Front Cell Neurosci	WB

## Storage

**Storage:**

Store at -20°C. Stable for one year after shipment.

**Storage Buffer:**

PBS with 0.02% sodium azide and 50% glycerol pH 7.3.

Aliquoting is unnecessary for -20°C storage

\*\*\* 20ul sizes contain 0.1% BSA

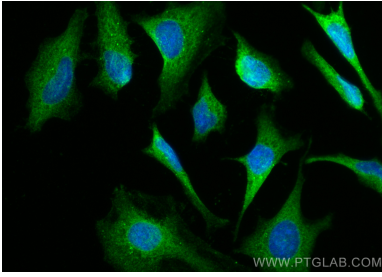
For technical support and original validation data for this product please contact:

T: 1 (888) 4PTGLAB (1-888-478-4522) (toll free in USA), or 1(312) 455-8498 (outside USA)

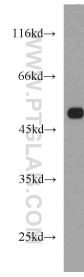
E: proteintech@ptglab.com  
W: ptglab.com

This product is exclusively available under Proteintech Group brand and is not available to purchase from any other manufacturer.

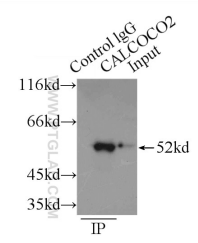
## Selected Validation Data



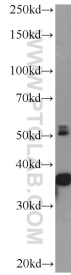
Immunofluorescent analysis of (-20°C Methanol) fixed HeLa cells using NDP52 antibody (12229-1-AP) at dilution of 1:400 and CoraLite®488-Conjugated AffiniPure Goat Anti-Rabbit IgG(H+L).



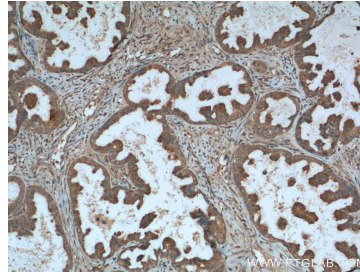
HeLa cells were subjected to SDS PAGE followed by western blot with 12229-1-AP (NDP52 antibody) at dilution of 1:1000 incubated at room temperature for 1.5 hours.



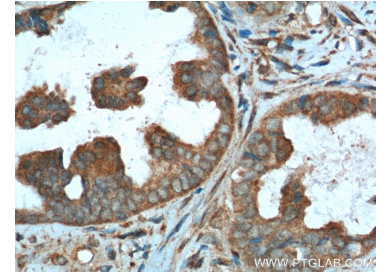
IP Result of anti-NDP52 (IP:12229-1-AP, 3ug; Detection:12229-1-AP 1:1000) with HeLa cells lysate 2150ug.



rat skeletal muscle tissue were subjected to SDS PAGE followed by western blot with 12229-1-AP (NDP52 Antibody) at dilution of 1:1000 incubated at room temperature for 1.5 hours.



Immunohistochemical analysis of paraffin-embedded human ovary tumor tissue slide using 12229-1-AP (NDP52 Antibody) at dilution of 1:200 (under 10x lens). Heat mediated antigen retrieval with Tris-EDTA buffer (pH 9.0).



Immunohistochemical analysis of paraffin-embedded human ovary tumor tissue slide using 12229-1-AP (NDP52 Antibody) at dilution of 1:200 (under 40x lens). Heat mediated antigen retrieval with Tris-EDTA buffer (pH 9.0).