

For Research Use Only

LBR Polyclonal antibody

Catalog Number: 12398-1-AP **10 Publications**



Basic Information

Catalog Number: 12398-1-AP	GenBank Accession Number: BC020079	Purification Method: Antigen affinity purification
Size: 150ul , Concentration: 500 µg/ml by Nanodrop and 347 µg/ml by Bradford method using BSA as the standard;	GeneID (NCBI): 3930	Recommended Dilutions: WB 1:2000-1:12000
Source: Rabbit	UNIPROT ID: Q14739	IP 0.5-4.0 ug for 1.0-3.0 mg of total protein lysate
Isotype: IgG	Full Name: lamin B receptor	IF 1:25-1:100
Immunogen Catalog Number: AG3088	Calculated MW: 615 aa, 71 kDa	
	Observed MW: 58 kDa	

Applications

Tested Applications: FC, IF, IP, WB, ELISA	Positive Controls:
Cited Applications: CoIP, IF, IP, WB	WB : HeLa cells, A375 cells, C2C12 cells, human brain tissue, HepG2 cells
Species Specificity: human, mouse, rat	IP : A375 cells,
Cited Species: human, mouse	IF : HeLa cells, C6 cells, HepG2 cells

Background Information

Lamin-B receptor (LBR) is an integral membrane protein of the inner nuclear membrane that contains a hydrophilic N-terminal end protruding into the nucleoplasm, eight hydrophobic segments that span the membrane and a short, nucleoplasmic C-terminal tail (PMID: 28858257). LBR anchors the lamina and the heterochromatin to the inner nuclear membrane (PMID: 10828963; 28858257). It is also essential for cholesterol synthesis (PMID: 27336722). Mutations of the LBR gene have been associated with autosomal recessive HEM/Greenberg skeletal dysplasia and Pelger-Huët anomaly and Greenberg skeletal dysplasia (PMID: 12618959; 12490533). The calculated molecular mass of LBR is 71 kDa, which is larger than the apparent molecular mass of 58 kDa, probably due to the aberrant migration of membrane proteins subjected to SDS-PAGE (PMID: 2847165; 2170422).

Notable Publications

Author	Pubmed ID	Journal	Application
Qiong Wu	35698159	J Exp Clin Cancer Res	WB
Aurelio Reyes	32735630	PLoS Genet	WB
Zhe Xu	35809814	Transpl Immunol	WB

Storage

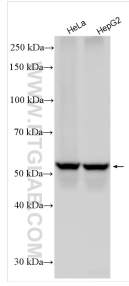
Storage:
Store at -20°C. Stable for one year after shipment.
Storage Buffer:
PBS with 0.02% sodium azide and 50% glycerol pH 7.3.
Aliquoting is unnecessary for -20°C storage

*** 20ul sizes contain 0.1% BSA

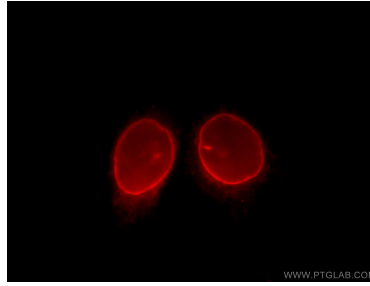
For technical support and original validation data for this product please contact:
T: 1 (888) 4PTGLAB (1-888-478-4522) (toll free in USA), or 1(312) 455-8498 (outside USA)
E: proteintech@ptglab.com
W: ptglab.com

This product is exclusively available under Proteintech Group brand and is not available to purchase from any other manufacturer.

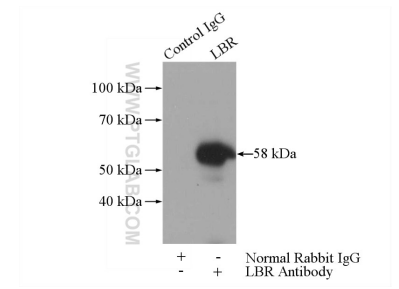
Selected Validation Data



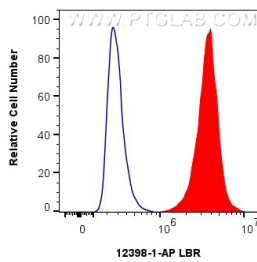
Various lysates were subjected to SDS PAGE followed by western blot with 12398-1-AP (LBR antibody) at dilution of 1:6000 incubated at room temperature for 1.5 hours.



Immunofluorescent analysis of HeLa cells, using LBR antibody 12398-1-AP at 1:25 dilution and Rhodamine-labeled goat anti-rabbit IgG (red).



IP result of anti-LBR (IP:12398-1-AP, 3ug; Detection:12398-1-AP 1:500) with A375 cells lysate 3200ug.



1×10^6 HeLa cells were intracellularly stained with 0.4 ug Anti-Human LBR (12398-1-AP) and CoraLite@488-Conjugated AffiniPure Goat Anti-Rabbit IgG(H+L) (SA00013-2) at dilution 1:1000(red), or 0.4 ug Isotype Control. Cells were fixed and permeabilized with Transcription Factor Staining Buffer Kit (PF00011).