

For Research Use Only

GSTM1 Polyclonal antibody

Catalog Number: 12412-1-AP

Featured Product

21 Publications



Basic Information

Catalog Number: 12412-1-AP	GenBank Accession Number: BC024005	Purification Method: Antigen affinity purification
Size: 150ul , Concentration: 300 µg/ml by Nanodrop;	GeneID (NCBI): 2944	Recommended Dilutions: WB 1:1000-1:4000 IHC 1:50-1:500 IF 1:50-1:500
Source: Rabbit	Full Name: glutathione S-transferase mu 1	
Isotype: IgG	Calculated MW: 181 aa, 21 kDa	
Immunogen Catalog Number: AG3113	Observed MW: 27 kDa	

Applications

Tested Applications:
IF, IHC, WB, ELISA

Cited Applications:
IF, IHC, WB

Species Specificity:
human, mouse, rat

Cited Species:
human, mouse

Note-IHC: suggested antigen retrieval with TE buffer pH 9.0; (*) Alternatively, antigen retrieval may be performed with citrate buffer pH 6.0

Positive Controls:

WB: mouse liver tissue, mouse ovary tissue, HeLa cells, mouse kidney tissue, rat liver

IHC: mouse liver tissue, human gliomas tissue

IF: HeLa cells,

Background Information

Notable Publications

Author	Pubmed ID	Journal	Application
Haibo Zhang	34671938	Reprod Sci	IHC
Peipei Li	35621716	FASEB J	WB
Yin Dongliang	35580023	J Med Microbiol	WB

Storage

Storage:

Store at -20°C. Stable for one year after shipment.

Storage Buffer:

PBS with 0.02% sodium azide and 50% glycerol pH 7.3.

Aliquoting is unnecessary for -20°C storage

*** 20ul sizes contain 0.1% BSA

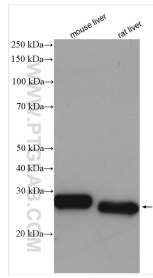
For technical support and original validation data for this product please contact:

T: 1 (888) 4PTGLAB (1-888-478-4522) (toll free in USA), or 1(312) 455-8498 (outside USA)

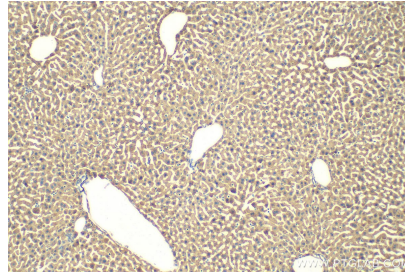
E: proteintech@ptglab.com
W: ptglab.com

This product is exclusively available under Proteintech Group brand and is not available to purchase from any other manufacturer.

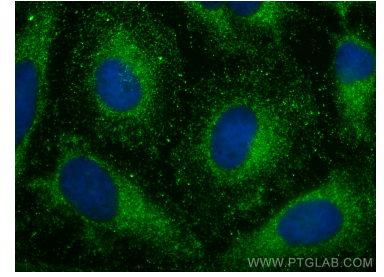
Selected Validation Data



Various lysates were subjected to SDS PAGE followed by western blot with 12412-1-AP (GSTM1 antibody) at dilution of 1:2000 incubated at room temperature for 1.5 hours.



Immunohistochemical analysis of paraffin-embedded mouse liver tissue slide using 12412-1-AP (GSTM1 antibody) at dilution of 1:200 (under 10x lens). Heat mediated antigen retrieval with Tris-EDTA buffer (pH 9.0).



Immunofluorescent analysis of (-20°C Methanol) fixed HeLa cells using GSTM1 antibody (12412-1-AP) at dilution of 1:200 and CoraLite®488-Conjugated AffiniPure Goat Anti-Rabbit IgG(H+L).