

For Research Use Only

# GCLC Polyclonal antibody

Catalog Number: 12601-1-AP

Featured Product

107 Publications



## Basic Information

### Catalog Number:

12601-1-AP

### Size:

150ul, Concentration: 600 µg/ml by Nanodrop;

### Source:

Rabbit

### Isotype:

IgG

### Immunogen Catalog Number:

AG3252

### GenBank Accession Number:

BC022487

### GeneID (NCBI):

2729

### UNIPROT ID:

P48506

### Full Name:

glutamate-cysteine ligase, catalytic subunit

### Calculated MW:

637 aa, 73 kDa

### Observed MW:

73 kDa

### Purification Method:

Antigen affinity purification

### Recommended Dilutions:

WB 1:2000-1:10000

IP 0.5-4.0 µg for 1.0-3.0 mg of total protein lysate

IHC 1:50-1:500

## Applications

### Tested Applications:

WB, IP, IHC, ELISA

### Cited Applications:

WB, IF, IHC

### Species Specificity:

human, mouse

### Cited Species:

human, goat, rat, mouse

**Note-IHC: suggested antigen retrieval with TE buffer pH 9.0; (\*) Alternatively, antigen retrieval may be performed with citrate buffer pH 6.0**

### Positive Controls:

WB: Jurkat cells, mouse kidney tissue, L02 cells, HEK-293 cells, Raji cells, mouse lung tissue

IP: mouse kidney tissue,

IHC: human kidney tissue, human liver tissue

## Background Information

GCLC (Glutamate--cysteine ligase catalytic subunit) belongs to the glutamate--cysteine ligase type 3 family. It is also named as GLCL, GLCLC. It is the first rate-limiting enzyme in glutathione (GSH) biosynthesis. GCLC gene may be associated with coronary endothelial vasomotor dysfunction and myocardial infarction (MI) (PMID:12598062). Defects in GCLC are the cause of hemolytic anemia (HAGGSD).

## Notable Publications

Author	Pubmed ID	Journal	Application
Lu Wang	34555641	Int Immunopharmacol	WB
Ana Tomasovic	27645114	Matrix Biol	WB
Juan Chen	34577027	Molecules	WB

## Storage

### Storage:

Store at -20°C. Stable for one year after shipment.

### Storage Buffer:

PBS with 0.02% sodium azide and 50% glycerol pH 7.3.

Aliquoting is unnecessary for -20°C storage

\*\*\* 20ul sizes contain 0.1% BSA

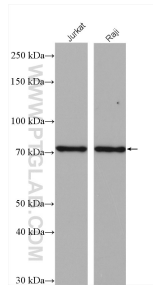
For technical support and original validation data for this product please contact:

T: 1 (888) 4PTGLAB (1-888-478-4522) (toll free in USA), or 1(312) 455-8498 (outside USA)

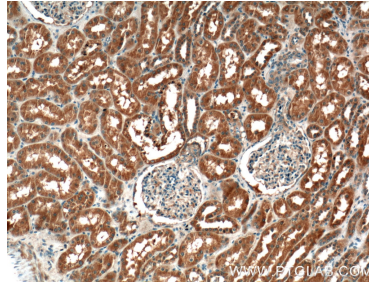
E: proteintech@ptglab.com  
W: ptglab.com

This product is exclusively available under Proteintech Group brand and is not available to purchase from any other manufacturer.

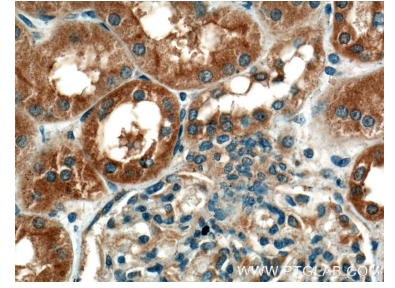
## Selected Validation Data



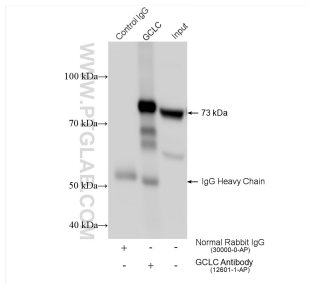
Various lysates were subjected to SDS PAGE followed by western blot with 12601-1-AP (GCLC antibody) at dilution of 1:5000 incubated at room temperature for 1.5 hours.



Immunohistochemical analysis of paraffin-embedded human kidney tissue slide using 12601-1-AP (GCLC Antibody) at dilution of 1:200 (under 10x lens).



Immunohistochemical analysis of paraffin-embedded human kidney tissue slide using 12601-1-AP (GCLC Antibody) at dilution of 1:200 (under 40x lens).



IP result of anti-GCLC (IP:12601-1-AP, 4ug; Detection:12601-1-AP 1:5000) with mouse kidney tissue lysate 2160 ug.