

For Research Use Only

Alpha E-Catenin Polyclonal antibody



Catalog Number: 12831-1-AP

16 Publications

Basic Information

Catalog Number: 12831-1-AP	GenBank Accession Number: BC031262	Purification Method: Antigen affinity purification
Size: 150ul, Concentration: 700 µg/ml by Nanodrop;	GeneID (NCBI): 1495	Recommended Dilutions: WB 1:1000-1:4000 IP 0.5-4.0 ug for 1.0-3.0 mg of total protein lysate
Source: Rabbit	Full Name: catenin (cadherin-associated protein), alpha 1, 102kDa	IHC 1:20-1:200 IF 1:10-1:100
Isotype: IgG	Calculated MW: 906 aa, 100 kDa	
Immunogen Catalog Number: AG3565	Observed MW: 100 kDa	

Applications

Tested Applications:
FC, IF, IHC, IP, WB, ELISA

Cited Applications:
IF, WB

Species Specificity:
human, mouse, rat

Cited Species:
human, rat, mouse

Positive Controls:

WB: mouse uterus tissue,

IP: mouse brain tissue,

IHC: human stomach tissue, human colon tissue, human pancreas cancer tissue

IF: A431 cells,

Note-IHC: suggested antigen retrieval with TE buffer pH 9.0; (*) Alternatively, antigen retrieval may be performed with citrate buffer pH 6.0

Background Information

Alpha catenin is an essential component of adherens junctions that connects E-cadherin-β-catenin complexes with the actin cytoskeleton. It also recruits a range of other important proteins to developing intercellular junctions. Three alpha catenins exist in human: alpha-E-catenin, alpha-N-catenin, and alpha-T-catenin, which share substantial amino-acid sequence similarity but have distinct tissue distribution. alpha-E-catenin is ubiquitously expressed, alpha-N-catenin is restricted to neuronal tissue, and alpha-T-catenin is primarily expressed in heart tissue. Reduced levels of alpha-E-catenin protein seem to be characteristic of many different human cancers, including malignant tumours of the breast, colon, stomach, oesophagus, bladder and liver. In addition, the loss of alpha-E-catenin often correlates with the degree of tumour differentiation and metastasis.

Notable Publications

Author	Pubmed ID	Journal	Application
Quan Zhou	31659258	Oncogene	WB
Xiaoli Ji	34650058	Cell Death Discov	WB
Yibin Zhou	30542490	Exp Ther Med	WB

Storage

Storage:

Store at -20°C. Stable for one year after shipment.

Storage Buffer:

PBS with 0.02% sodium azide and 50% glycerol pH 7.3.

Aliquoting is unnecessary for -20°C storage

*** 20ul sizes contain 0.1% BSA

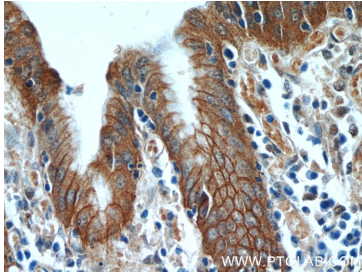
For technical support and original validation data for this product please contact:

T: 1 (888) 4PTGLAB (1-888-478-4522) (toll free in USA), or 1(312) 455-8498 (outside USA)

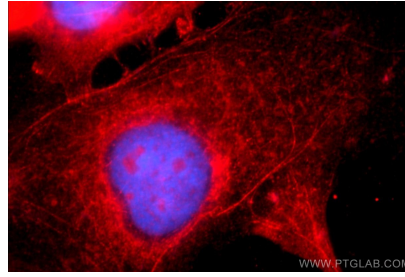
E: proteintech@ptglab.com
W: ptglab.com

This product is exclusively available under Proteintech Group brand and is not available to purchase from any other manufacturer.

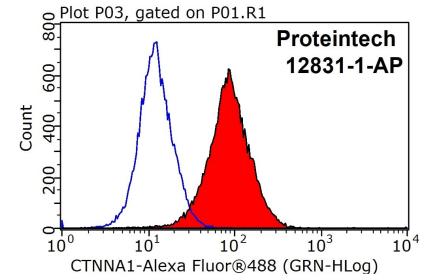
Selected Validation Data



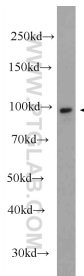
Immunohistochemical analysis of paraffin-embedded human stomach tissue slide using 12831-1-AP (Alpha E catenin antibody at dilution of 1:50 (under 40x lens).



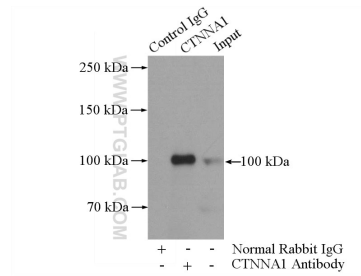
Immunofluorescent analysis of A431 cells using 12831-1-AP (Alpha E catenin antibody) at dilution of 1:25 and Rhodamine-Goat anti-Rabbit IgG.



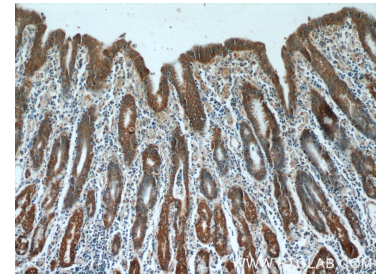
1X10⁶ MCF-7 cells were stained with 0.2ug Alpha E catenin antibody (12831-1-AP, red) and control antibody (blue). Fixed with 90% MeOH blocked with 3% BSA (30 min). Alexa Fluor 488-conjugated AffiniPure Goat Anti-Rabbit IgG(H+L) with dilution 1:1000.



mouse uterus tissue were subjected to SDS PAGE followed by western blot with 12831-1-AP (Alpha E catenin antibody at dilution of 1:2000 incubated at room temperature for 1.5 hours.



IP Result of anti-Alpha E catenin (IP:12831-1-AP, 4ug; Detection:12831-1-AP 1:700) with mouse brain tissue lysate 4000ug.



Immunohistochemical analysis of paraffin-embedded human stomach tissue slide using 12831-1-AP (Alpha E catenin antibody at dilution of 1:50 (under 10x lens).