

For Research Use Only

# KIF2A Polyclonal antibody

Catalog Number: 13105-1-AP

Featured Product

12 Publications



## Basic Information

**Catalog Number:**

13105-1-AP

**Size:**

150ul, Concentration: 300 µg/ml by Nanodrop and 207 µg/ml by Bradford method using BSA as the standard;

**Source:**

Rabbit

**Isotype:**

IgG

**Immunogen Catalog Number:**

AG3748

**GenBank Accession Number:**

BC031828

**GeneID (NCBI):**

3796

**UNIPROT ID:**

O00139

**Full Name:**

kinesin heavy chain member 2A

**Calculated MW:**

679 aa, 77 kDa

**Observed MW:**

80-100 kDa

**Purification Method:**

Antigen affinity purification

**Recommended Dilutions:**

WB 1:1000-1:8000

IP 0.5-4.0 µg for 1.0-3.0 mg of total protein lysate

IHC 1:20-1:200

IF 1:250-1:1000

## Applications

**Tested Applications:**

WB, IP, IF, FC, IHC, ELISA

**Cited Applications:**

WB, IP, IF

**Species Specificity:**

human, mouse, rat, Canine

**Cited Species:**

human, mouse

**Note-IHC: suggested antigen retrieval with TE buffer pH 9.0; (\*) Alternatively, antigen retrieval may be performed with citrate buffer pH 6.0**

**Positive Controls:**

WB : HeLa cells, mouse brain tissue, rat brain tissue

IP : mouse brain tissue,

IHC : human breast cancer tissue,

IF : A549 cells, MDCK cells

## Notable Publications

Author	Pubmed ID	Journal	Application
Tianyu Wu	36395215	Science	IF
Junjie Huang	34137789	J Cell Biol	WB, IF
Xin Zhang	32106376	Biomed Pharmacother	WB

## Storage

**Storage:**

Store at -20°C. Stable for one year after shipment.

**Storage Buffer:**

PBS with 0.02% sodium azide and 50% glycerol pH 7.3.

Aliquoting is unnecessary for -20°C storage

\*\*\* 20ul sizes contain 0.1% BSA

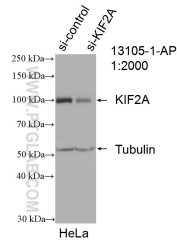
For technical support and original validation data for this product please contact:

T: 1 (888) 4PTGLAB (1-888-478-4522) (toll free in USA), or 1(312) 455-8498 (outside USA)

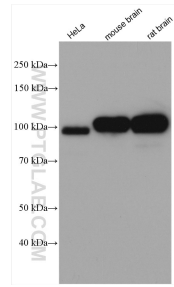
E: proteintech@ptglab.com  
W: ptglab.com

This product is exclusively available under Proteintech Group brand and is not available to purchase from any other manufacturer.

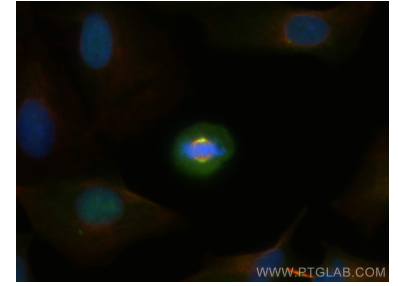
## Selected Validation Data



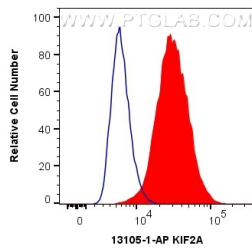
WB result of KIF2A antibody (13105-1-AP; 1:3000; incubated at room temperature for 1.5 hours) with sh-Control and sh-KIF2A transfected HeLa cells.



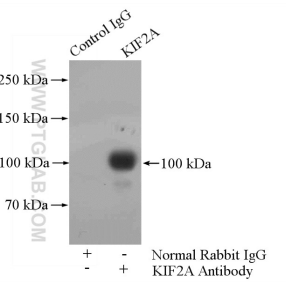
Various lysates were subjected to SDS PAGE followed by western blot with 13105-1-AP (KIF2A antibody) at dilution of 1:4000 incubated at room temperature for 1.5 hours.



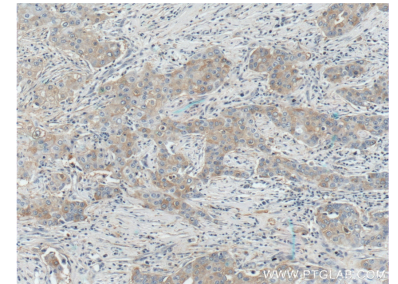
Immunofluorescent analysis of (4% PFA) fixed A549 cells using KIF2A antibody (13105-1-AP) at dilution of 1:500 and CoraLite@488-Conjugated AffiniPure Goat Anti-Rabbit IgG(H+L), Alpha Tubulin antibody (66031-1-Ig, Clone: 1E4C11, red).



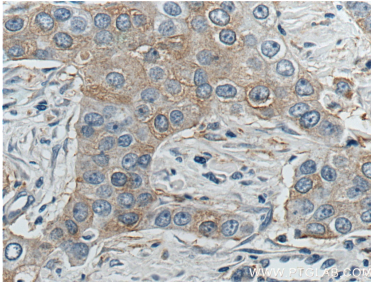
1X10<sup>6</sup> A549 cells were intracellularly stained with 0.4 ug Anti-Human KIF2A (13105-1-AP) and CoraLite@488-Conjugated AffiniPure Goat Anti-Rabbit IgG(H+L) at dilution 1:1000 (red), or 0.4 ug Isotype Control. Cells were fixed with 4% PFA and permeabilized with Flow Cytometry Perm Buffer (PF00011-C).



IP result of anti-KIF2A (IP:13105-1-AP, 4ug; Detection:13105-1-AP 1:1000) with mouse brain tissue lysate 4000ug.



Immunohistochemical analysis of paraffin-embedded human breast cancer tissue slide using 13105-1-AP (KIF2A Antibody) at dilution of 1:200 (under 10x lens).



Immunohistochemical analysis of paraffin-embedded human breast cancer tissue slide using 13105-1-AP (KIF2A Antibody) at dilution of 1:200 (under 40x lens).