

For Research Use Only

# CIDEA Polyclonal antibody

Catalog Number: 13170-1-AP **16 Publications**



## Basic Information

<b>Catalog Number:</b> 13170-1-AP	<b>GenBank Accession Number:</b> BC031896	<b>Purification Method:</b> Antigen affinity purification
<b>Size:</b> 150ul , Concentration: 700 µg/ml by Nanodrop;	<b>GeneID (NCBI):</b> 1149	<b>Recommended Dilutions:</b> WB 1:500-1:2000 IHC 1:500-1:2000
<b>Source:</b> Rabbit	<b>Full Name:</b> cell death-inducing DFFA-like effector a	
<b>Isotype:</b> IgG	<b>Calculated MW:</b> 253 aa, 28 kDa	
<b>Immunogen Catalog Number:</b> AG3824	<b>Observed MW:</b> 25 kDa	

## Applications

<b>Tested Applications:</b> IHC, WB, ELISA	<b>Positive Controls:</b>
<b>Cited Applications:</b> IF, IHC, WB	<b>WB:</b> mouse heart tissue,
<b>Species Specificity:</b> human, mouse, rat	<b>IHC:</b> mouse brown adipose tissue,
<b>Cited Species:</b> human, rat, mouse	

**Note-IHC: suggested antigen retrieval with TE buffer pH 9.0; (\*) Alternatively, antigen retrieval may be performed with citrate buffer pH 6.0**

## Background Information

Cell death-inducing DNA fragmentation factor (DFFA)-like effector (CIDE) family proteins, including Cidea, Cideb, and Fsp27 (Cidec), are lipid droplet (LD)-associated proteins playing important roles in LD fusion, lipid secretion, and very-low-density-lipoprotein (VLDL) maturation. Cidea is highly enriched in adult brown adipose tissue (BAT), and its deficiency results in the accumulation of smaller LDs in brown adipocytes, improved INS sensitivity, and resistance to diet-induced obesity. The MW of this protein is 25 kDa, and this antibody specially recognises the 25 kDa protein.

## Notable Publications

Author	Pubmed ID	Journal	Application
Xiaoqian Zeng	36169214	Food Funct	WB,IHC
Yingjiang Xu	34704268	EMBO J	WB
Chengyu Liu	31597640	Diabetes	WB

## Storage

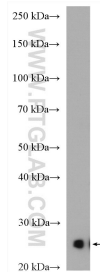
**Storage:**  
Store at -20°C. Stable for one year after shipment.  
**Storage Buffer:**  
PBS with 0.02% sodium azide and 50% glycerol pH 7.3.  
Aliquoting is unnecessary for -20°C storage

\*\*\* 20ul sizes contain 0.1% BSA

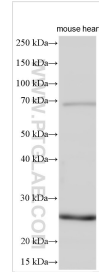
For technical support and original validation data for this product please contact:  
T: 1 (888) 4PTGLAB (1-888-478-4522) (toll free in USA), or 1(312) 455-8498 (outside USA)  
E: proteintech@ptglab.com  
W: ptglab.com

This product is exclusively available under Proteintech Group brand and is not available to purchase from any other manufacturer.

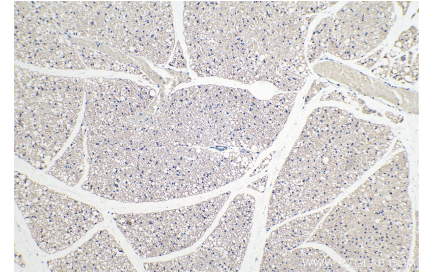
## Selected Validation Data



mouse heart tissue were subjected to SDS PAGE followed by western blot with 13170-1-AP (CIDEA antibody) at dilution of 1:300 incubated at room temperature for 1.5 hours.



Mouse heart tissue was subjected to SDS PAGE followed by western blot with 13170-1-AP (CIDEA antibody) at dilution of 1:1000 incubated at room temperature for 1.5 hours.



Immunohistochemical analysis of paraffin-embedded mouse brown adipose tissue slide using 13170-1-AP (CIDEA antibody) at dilution of 1:1000 (under 10x lens). Heat mediated antigen retrieval with Tris-EDTA buffer (pH 9.0).