

For Research Use Only

DCLRE1B Polyclonal antibody

Catalog Number: 13203-1-AP **1 Publications**



Basic Information

Catalog Number: 13203-1-AP	GenBank Accession Number: BC029687	Purification Method: Antigen affinity purification
Size: 150ul, Concentration: 550 µg/ml by Nanodrop and 307 µg/ml by Bradford method using BSA as the standard;	GeneID (NCBI): 64858	Recommended Dilutions: WB 1:500-1:1000 IF 1:50-1:500
Source: Rabbit	Full Name: DNA cross-link repair 1B (PSO2 homolog, <i>S. cerevisiae</i>)	
Isotype: IgG	Calculated MW: 532 aa, 60 kDa	
Immunogen Catalog Number: AG3945	Observed MW: 60 kDa	

Applications

Tested Applications: IF, WB, ELISA	Positive Controls: WB: Jurkat cells, HepG2 cells
Cited Applications: WB	IF: HepG2 cells,
Species Specificity: human, mouse, rat	
Cited Species: human	

Background Information

Interstrand cross-links (ICLs) is an extremely cytotoxic form of DNA damage that covalently tethers the two strands of the double helix, which inhibits fundamental nuclear functions, including transcription and DNA replication [PMID:21701511]. DCLRE1B is one of several evolutionarily conserved genes involved in repair of interstrand cross-links [PMID:10848582]. Furthermore, DCLRE1B was identified as a TRF2-interacting protein and, has a role in telomere maintenance in association with the Shelterin complex, preventing non-homologous end-joining-mediated chromosome fusions protecting leading strand telomeres [PMID:20619712].

Notable Publications

Author	Pubmed ID	Journal	Application
Nazareno Bona	37580626	Nat Struct Mol Biol	WB

Storage

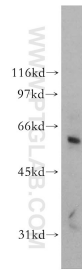
Storage:
Store at -20°C. Stable for one year after shipment.
Storage Buffer:
PBS with 0.02% sodium azide and 50% glycerol pH 7.3.
Aliquoting is unnecessary for -20°C storage

*** 20ul sizes contain 0.1% BSA

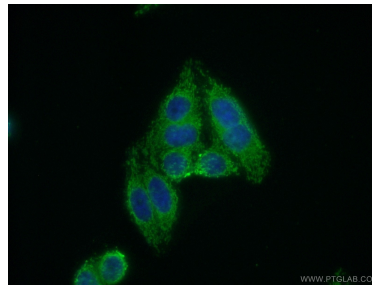
For technical support and original validation data for this product please contact:
T: 1 (888) 4PTGLAB (1-888-478-4522) (toll free in USA), or 1(312) 455-8498 (outside USA)
E: proteintech@ptglab.com
W: ptglab.com

This product is exclusively available under Proteintech Group brand and is not available to purchase from any other manufacturer.

Selected Validation Data



Jurkat cells were subjected to SDS PAGE followed by western blot with 13203-1-AP (DCLRE1B antibody) at dilution of 1:800 incubated at room temperature for 1.5 hours.



Immunofluorescent analysis of (10% Formaldehyde) fixed HepG2 cells using 13203-1-AP (DCLRE1B antibody) at dilution of 1:50 and Alexa Fluor 488-conjugated AffiniPure Goat Anti-Rabbit IgG(H+L).