

For Research Use Only

# CTAGE1 Polyclonal antibody

Catalog Number: 13267-1-AP **2 Publications**



## Basic Information

<b>Catalog Number:</b> 13267-1-AP	<b>GenBank Accession Number:</b> BC031065	<b>Purification Method:</b> Antigen affinity purification
<b>Size:</b> 150ul , Concentration: 600 µg/ml by Nanodrop and 300 µg/ml by Bradford method using BSA as the standard;	<b>GeneID (NCBI):</b> 64693	<b>Recommended Dilutions:</b> WB 1:500-1:1000 IP 0.5-4.0 ug for IP and 1:500-1:1000 for WB
<b>Source:</b> Rabbit	<b>Full Name:</b> cutaneous T-cell lymphoma-associated antigen 1	
<b>Isotype:</b> IgG	<b>Calculated MW:</b> 754 aa, 89 kDa	
<b>Immunogen Catalog Number:</b> AG3948	<b>Observed MW:</b> 86-120 kDa	

## Applications

<b>Tested Applications:</b> IP, WB, ELISA	<b>Positive Controls:</b> WB : HeLa cells, Jurkat cells
<b>Cited Applications:</b> WB	<b>IP :</b> HeLa cells,
<b>Species Specificity:</b> human	
<b>Cited Species:</b> human	

## Background Information

### Notable Publications

Author	Pubmed ID	Journal	Application
Shulin Li	34561617	Cell Res	
Ivan V Litvinov	24850846	Clin Cancer Res	WB

## Storage

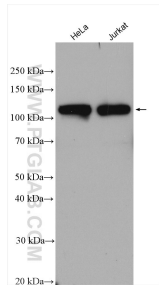
**Storage:**  
Store at -20°C. Stable for one year after shipment.  
**Storage Buffer:**  
PBS with 0.02% sodium azide and 50% glycerol pH 7.3.  
Aliquoting is unnecessary for -20°C storage

\*\*\* 20ul sizes contain 0.1% BSA

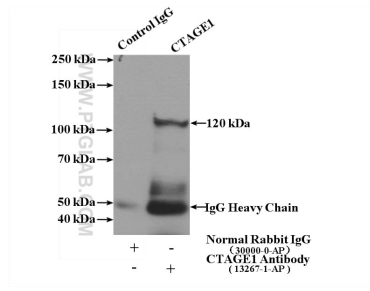
For technical support and original validation data for this product please contact:  
T: 1 (888) 4PTGLAB (1-888-478-4522) (toll free in USA), or 1(312) 455-8498 (outside USA)  
E: proteintech@ptglab.com  
W: ptglab.com

This product is exclusively available under Proteintech Group brand and is not available to purchase from any other manufacturer.

## Selected Validation Data



Various lysates were subjected to SDS PAGE followed by western blot with 13267-1-AP (CTAGE1 antibody) at dilution of 1:600 incubated at room temperature for 1.5 hours.



IP Result of anti-CTAGE1 (IP:13267-1-AP, 4ug; Detection:13267-1-AP 1:500) with HeLa cells lysate 2400ug.