

For Research Use Only

TULP3 Polyclonal antibody

Catalog Number: 13637-1-AP

Featured Product

12 Publications



Basic Information

Catalog Number:
13637-1-AP

Size:
150ul, Concentration: 450 µg/ml by Nanodrop and 180 µg/ml by Bradford method using BSA as the standard;

Source:
Rabbit

Isotype:
IgG

Immunogen Catalog Number:
AG4570

GenBank Accession Number:
BC032587

GeneID (NCBI):
7289

Full Name:
tubby like protein 3

Calculated MW:
442 aa, 50 kDa

Observed MW:
60 kDa

Purification Method:
Antigen affinity purification

Recommended Dilutions:
WB 1:500-1:1000
IP 0.5-4.0 ug for IP and 1:500-1:1000 for WB
IHC 1:50-1:500

Applications

Tested Applications:
IHC, IP, WB, ELISA

Cited Applications:
IF, IHC, WB

Species Specificity:
human, mouse, rat

Cited Species:
human, mouse

Note-IHC: suggested antigen retrieval with TE buffer pH 9.0; (*) Alternatively, antigen retrieval may be performed with citrate buffer pH 6.0

Positive Controls:

WB: SH-SY5Y cells,

IP: SH-SY5Y cells,

IHC: human ovary tumor tissue, human gliomas tissue

Background Information

The tubby-like protein 3 (TULP3) has been identified as a member of tubby and tubby-like proteins (TULPs) that plays an important role in maintenance and function of neuronal cells during development and post-differentiation. Tulp3 gene is essential for embryonic development in mice. Recently TULP3 has been reported to bind to the IFT (intraflagellar transport)-A complex and promote trafficking of G protein-coupled receptors into primary cilia, which is implicated in regulating neuronal function.

Notable Publications

Author	Pubmed ID	Journal	Application
Dario Cilleros-Rodriguez	36063381	Elife	WB,IF
Chen-Jei Hong	27727273	PLoS Genet	WB
Leah Schembs	35584663	Cell Rep	IF

Storage

Storage:

Store at -20°C. Stable for one year after shipment.

Storage Buffer:

PBS with 0.02% sodium azide and 50% glycerol pH 7.3.

Aliquoting is unnecessary for -20°C storage

*** 20ul sizes contain 0.1% BSA

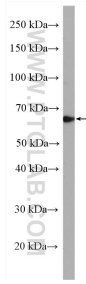
For technical support and original validation data for this product please contact:

T: 1 (888) 4PTGLAB (1-888-478-4522) (toll free in USA), or 1(312) 455-8498 (outside USA)

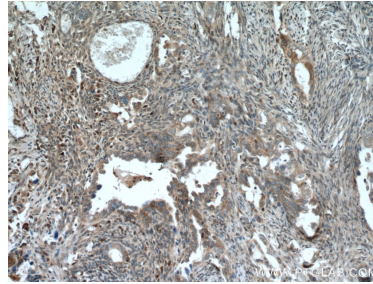
E: proteintech@ptglab.com
W: ptglab.com

This product is exclusively available under Proteintech Group brand and is not available to purchase from any other manufacturer.

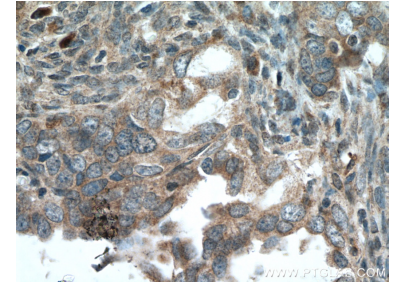
Selected Validation Data



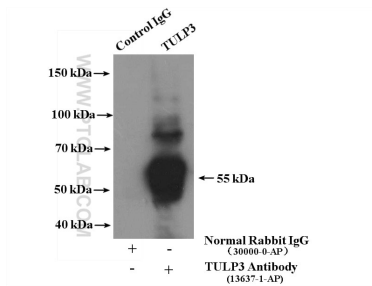
SH-SY5Y cells were subjected to SDS PAGE followed by western blot with 13637-1-AP (TULP3 antibody) at dilution of 1:600 incubated at room temperature for 1.5 hours.



Immunohistochemical analysis of paraffin-embedded human ovary tumor tissue slide using 13637-1-AP (TULP3 antibody) at dilution of 1:200 (under 10x lens. Heat mediated antigen retrieval with Tris-EDTA buffer (pH 9.0).



Immunohistochemical analysis of paraffin-embedded human ovary tumor tissue slide using 13637-1-AP (TULP3 antibody) at dilution of 1:200 (under 40x lens. Heat mediated antigen retrieval with Tris-EDTA buffer (pH 9.0).



IP Result of anti-TULP3 (IP:13637-1-AP, 4ug; Detection:13637-1-AP 1:800) with SH-SY5Y cells lysate 1600ug.