

For Research Use Only

MX1 Polyclonal antibody

Catalog Number: 13750-1-AP

Featured Product

86 Publications



Basic Information

Catalog Number: 13750-1-AP	GenBank Accession Number: BC032602	Purification Method: Antigen affinity purification
Size: 150ul, Concentration: 550 µg/ml by Nanodrop;	GeneID (NCBI): 4599	Recommended Dilutions: WB 1:500-1:1000 IHC 1:50-1:500 IF 1:50-1:500
Source: Rabbit	Full Name: Myxovirus resistance protein 1	
Isotype: IgG	Calculated MW: 662 aa, 76 kDa	
Immunogen Catalog Number: AG4692	Observed MW: 76 kDa	

Applications

Tested Applications: FC, IF, IHC, IP, WB, ELISA	Positive Controls: WB : A549 cells, mouse lung tissue IHC : human tonsillitis tissue, human lung cancer tissue IF : A549 cells,
Cited Applications: FC, IF, IHC, IP, WB	
Species Specificity: human, mouse	
Cited Species: human, Chicken, mouse, monkey, hamster, Pavo cristatus, pig, canine, macaque	
Note-IHC: suggested antigen retrieval with TE buffer pH 9.0; (*) Alternatively, antigen retrieval may be performed with citrate buffer pH 6.0	

Background Information

Mx1 (also known as MxA) is a GTPase that belongs to the Mx family of proteins, which are ubiquitous in eukaryotes and involved in the immune response to viral infections. The human Mx1 is localized in the cytoplasm interfering with the translation of viral proteins, whereas the mouse Mx1 accumulates in the nucleus and inhibits the primary transcription of viral RNA. Mx1 expression is induced by treatment with α/β IFN. This antibody can recognize the endogenous Mx1 protein in several tissues like lung and spleen.

Notable Publications

Author	Pubmed ID	Journal	Application
Yuki Kurebayashi	34529742	PLoS Pathog	WB,IF
Xiaodan Yang	27527594	J Immunol	WB
Kang An	25357264	J Proteome Res	WB

Storage

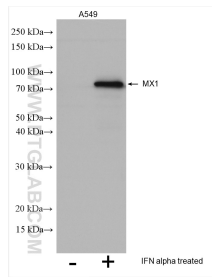
Storage:
Store at -20°C. Stable for one year after shipment.
Storage Buffer:
PBS with 0.02% sodium azide and 50% glycerol pH 7.3.
Aliquoting is unnecessary for -20°C storage

*** 20ul sizes contain 0.1% BSA

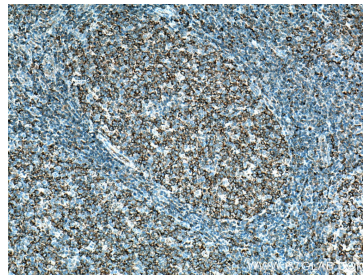
For technical support and original validation data for this product please contact:
T: 1 (888) 4PTGLAB (1-888-478-4522) (toll free in USA), or 1(312) 455-8498 (outside USA)
E: proteintech@ptglab.com
W: ptglab.com

This product is exclusively available under Proteintech Group brand and is not available to purchase from any other manufacturer.

Selected Validation Data

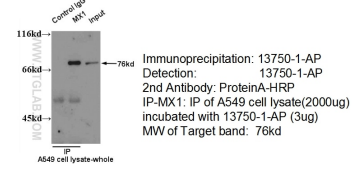


Lysates of A549 cells treated or non-treated with IFN-alpha were subjected to SDS PAGE followed by western blot with 13750-1-AP (MX1 antibody) at dilution of 1:600 incubated at room temperature for 1.5 hours.

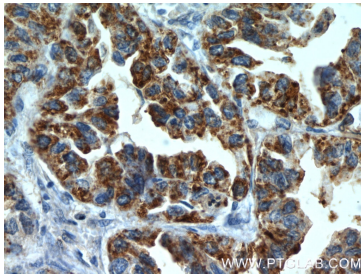


Immunohistochemical analysis of paraffin-embedded human tonsillitis tissue slide using 13750-1-AP (MX1 antibody) at dilution of 1:200 (under 10x lens). Heat mediated antigen retrieval with Tris-EDTA buffer (pH 9.0).

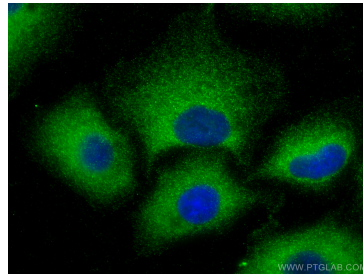
IP & WB of 13750-1-AP with A549 Cell



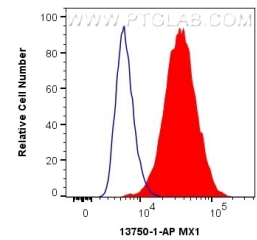
IP result of anti-MX1 (13750-1-AP for IP and Detection) with A549 cell.



Immunohistochemical analysis of paraffin-embedded human lung cancer slide using 13750-1-AP (MX1 Antibody) at dilution of 1:50.



Immunofluorescent analysis of (-20°C Methanol) fixed A549 cells using MX1 antibody (13750-1-AP) at dilution of 1:200 and CoralLite@488-Conjugated AffiniPure Goat Anti-Rabbit IgG(H+L).



1×10^6 A549 cells were intracellularly stained with 0.4 ug Anti-Human MX1 (13750-1-AP) and CoralLite@488-Conjugated AffiniPure Goat Anti-Rabbit IgG(H+L) at dilution 1:1000 (red), or 0.4 ug Isotype Control. Cells were fixed with 4% PFA and permeabilized with Flow Cytometry Perm Buffer (PF00011-C).