

For Research Use Only

PAI-1 Polyclonal antibody

Catalog Number: 13801-1-AP **46 Publications**



Basic Information

Catalog Number: 13801-1-AP	GenBank Accession Number: BC010860	Purification Method: Antigen affinity purification
Size: 150ul , Concentration: 550 µg/ml by Nanodrop;	GeneID (NCBI): 5054	Recommended Dilutions: WB 1:500-1:2000 IP 0.5-4.0 ug for 1.0-3.0 mg of total protein lysate IHC 1:50-1:500 IF 1:50-1:500
Source: Rabbit	UNIPROT ID: P05121	
Isotype: IgG	Full Name: serpin peptidase inhibitor, clade E (nexin, plasminogen activator inhibitor type 1), member 1	
Immunogen Catalog Number: AG4777	Calculated MW: 402 aa, 45 kDa	
	Observed MW: 45 kDa	

Applications

Tested Applications: WB, IP, IF, IHC, ELISA	Positive Controls: WB : HuH-7 cells, HepG2 cells, PC-12 cells, U2OS cells, human placenta tissue
Cited Applications: WB, IF, IHC, ColP	IP : HepG2 cells,
Species Specificity: human, rat	IHC : human lung cancer tissue,
Cited Species: human, bovine	IF : HUVEC cells,

Note-IHC: suggested antigen retrieval with TE buffer pH 9.0; (*) Alternatively, antigen retrieval may be performed with citrate buffer pH 6.0

Background Information

SERPINE1, also named as Plasminogen activator inhibitor type 1 (PAI-1), is a member of the serine protease inhibitor (SERPIN) superfamily. PAI-1 is the principal inhibitor of tPA and uPA, and hence is an inhibitor of fibrinolysis. Defects in this gene are the cause of plasminogen activator inhibitor-1 deficiency (PAI-1 deficiency), and high concentrations of the gene product are associated with thrombophilia. In western blotting, we got two bands 50 kDa and 90-110 kDa, and 90-110 kDa consistent with PAI-1 in complex with its target protease, t-PA (PMID: 21596853).

Notable Publications

Author	Pubmed ID	Journal	Application
Yasuhiro Nanri	31505128	Am J Respir Cell Mol Biol	IHC
Zengqiang Miao	31734109	J Microbiol Immunol Infect	WB
Muhammad Khan	36389725	Front Immunol	IHC

Storage

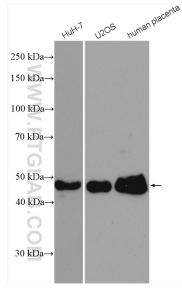
Storage:
Store at -20°C. Stable for one year after shipment.
Storage Buffer:
PBS with 0.02% sodium azide and 50% glycerol pH 7.3.
Aliquoting is unnecessary for -20°C storage

***** 20ul sizes contain 0.1% BSA**

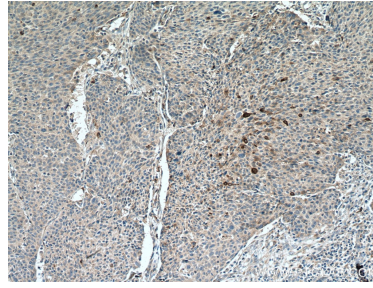
For technical support and original validation data for this product please contact:
T: 1 (888) 4PTGLAB (1-888-478-4522) (toll free in USA), or 1(312) 455-8498 (outside USA)
E: proteintech@ptglab.com
W: ptglab.com

This product is exclusively available under Proteintech Group brand and is not available to purchase from any other manufacturer.

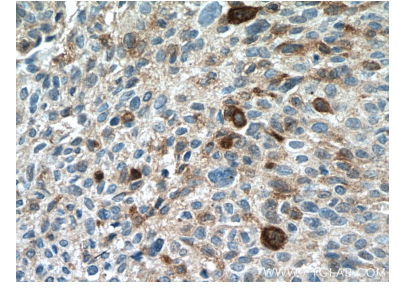
Selected Validation Data



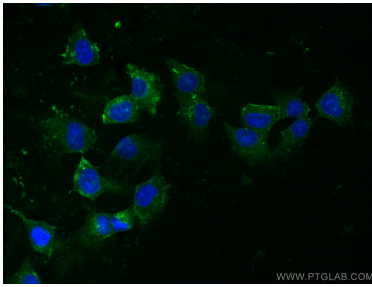
Various lysates were subjected to SDS PAGE followed by western blot with 13801-1-AP (PAI-1 antibody) at dilution of 1:1000 incubated at room temperature for 1.5 hours.



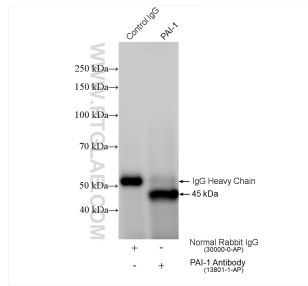
Immunohistochemical analysis of paraffin-embedded human lung cancer tissue slide using 13801-1-AP (PAI-1 antibody) at dilution of 1:200 (under 10x lens. Heat mediated antigen retrieval with Tris-EDTA buffer (pH 9.0).



Immunohistochemical analysis of paraffin-embedded human lung cancer tissue slide using 13801-1-AP (PAI-1 antibody) at dilution of 1:200 (under 40x lens. Heat mediated antigen retrieval with Tris-EDTA buffer (pH 9.0).



Immunofluorescent analysis of (-20°C Ethanol) fixed HUVEC cells using PAI-1 antibody (13801-1-AP) at dilution of 1:200 and CoraLite®488-Conjugated AffiniPure Goat Anti-Rabbit IgG(H+L).



IP result of anti-PAI-1 (IP:13801-1-AP, 4ug; Detection:13801-1-AP 1:2000) with HepG2 cells lysate 1360 ug.