

For Research Use Only

TIMM44 Polyclonal antibody

Catalog Number: 13859-1-AP

Featured Product

20 Publications



Basic Information

Catalog Number:

13859-1-AP

Size:

150ul, Concentration: 800 µg/ml by Nanodrop and 287 µg/ml by Bradford method using BSA as the standard;

Source:

Rabbit

Isotype:

IgG

Immunogen Catalog Number:

AG4834

GenBank Accession Number:

BC033628

GeneID (NCBI):

10469

UNIPROT ID:

O43615

Full Name:

translocase of inner mitochondrial membrane 44 homolog (yeast)

Calculated MW:

452 aa, 51 kDa

Observed MW:

45 kDa

Purification Method:

Antigen affinity purification

Recommended Dilutions:

WB 1:1000-1:6000

IP 0.5-4.0 µg for 1.0-3.0 mg of total protein lysate

IF 1:50-1:500

Applications

Tested Applications:

IF, IP, WB, ELISA

Cited Applications:

IF, IP, WB

Species Specificity:

human, mouse, rat

Cited Species:

human, mouse

Positive Controls:

WB : HeLa cells, Neuro-2a cells, C6 cells, Jurkat cells

IP : HeLa cells, mouse heart tissue

IF : HepG2 cells,

Background Information

Notable Publications

Author	Pubmed ID	Journal	Application
Jonas Benjamin Michaelis	36056001	Nat Commun	WB
Ricarda Richter-Dennerlein	27693358	Cell	WB
Marcel Morgenstern	34800366	Cell Metab	WB

Storage

Storage:

Store at -20°C. Stable for one year after shipment.

Storage Buffer:

PBS with 0.02% sodium azide and 50% glycerol pH 7.3.

Aliquoting is unnecessary for -20°C storage

*** 20ul sizes contain 0.1% BSA

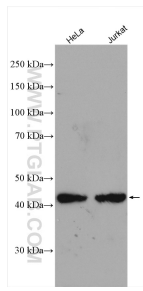
For technical support and original validation data for this product please contact:

T: 1 (888) 4PTGLAB (1-888-478-4522) (toll free in USA), or 1(312) 455-8498 (outside USA)

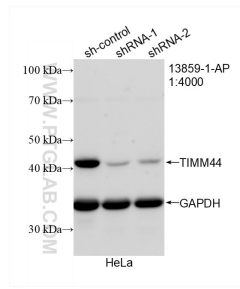
E: proteintech@ptglab.com
W: ptglab.com

This product is exclusively available under Proteintech Group brand and is not available to purchase from any other manufacturer.

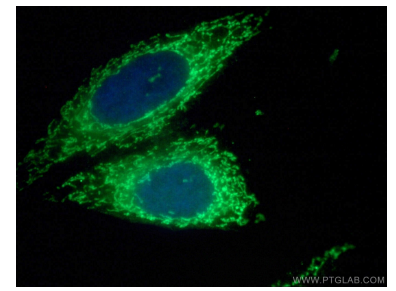
Selected Validation Data



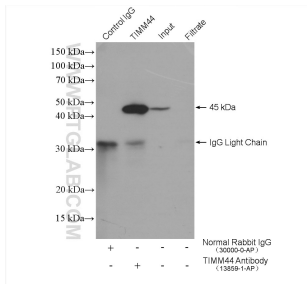
Various lysates were subjected to SDS PAGE followed by western blot with 13859-1-AP (TIMM44 antibody) at dilution of 1:3000 incubated at room temperature for 1.5 hours.



WB result of TIMM44 antibody (13859-1-AP; 1:4000; incubated at room temperature for 1.5 hours) with sh-Control and sh-TIMM44 transfected HeLa cells.



Immunofluorescent analysis of (4% PFA) fixed HepG2 cells using 13859-1-AP (TIMM44 antibody) at dilution of 1:50 and Alexa Fluor 488-Conjugated AffiniPure Goat Anti-Rabbit IgG(H+L).



IP result of anti-TIMM44 (IP:13859-1-AP, 4ug; Detection:13859-1-AP 1:1000) with HeLa cells lysate 1280 ug.