

For Research Use Only

CCPG1 Polyclonal antibody

Catalog Number: 13861-1-AP

Featured Product

15 Publications



Basic Information

Catalog Number: 13861-1-AP	GenBank Accession Number: BC034914	Purification Method: Antigen affinity purification
Size: 150ul , Concentration: 500 µg/ml by Nanodrop and 267 µg/ml by Bradford method using BSA as the standard;	GeneID (NCBI): 9236	Recommended Dilutions: WB 1:500-1:1000 IHC 1:50-1:500 IF 1:200-1:800
Source: Rabbit	Full Name: cell cycle progression 1	
Isotype: IgG	Calculated MW: 87 kDa	
Immunogen Catalog Number: AG4841	Observed MW: 110 kDa	

Applications

Tested Applications: IF, IHC, WB, ELISA	Positive Controls: WB : HepG2 cells, L02 cells, THP-1 cells IHC : human stomach cancer tissue, IF : HepG2 cells,
Cited Applications: IHC, IP, WB	
Species Specificity: human	
Cited Species: human, rat, mouse	
Note-IHC: suggested antigen retrieval with TE buffer pH 9.0; (*) Alternatively, antigen retrieval may be performed with citrate buffer pH 6.0	

Background Information

Cell-cycle progression gene 1 (CCPG1) is a receptor for ER stress-induced ER-phagy. CCPG1 localizes to perinuclear ER and in small foci at the ER periphery. It contains a LIR at the N-terminal cytosolic domain engaging LC3/GABARAP. (PMID: 29802216, PMID: 29290589)

Notable Publications

Author	Pubmed ID	Journal	Application
Svenja Zielke	33111629	Autophagy	WB
Maria Sol Herrera-Cruz	34743744	Biol Direct	WB
Corey N Cunningham	31176671	Mol Cell	WB

Storage

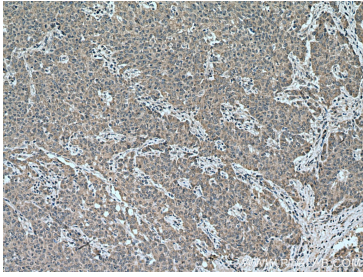
Storage:
Store at -20°C. Stable for one year after shipment.
Storage Buffer:
PBS with 0.02% sodium azide and 50% glycerol pH 7.3.
Aliquoting is unnecessary for -20°C storage

*** 20ul sizes contain 0.1% BSA

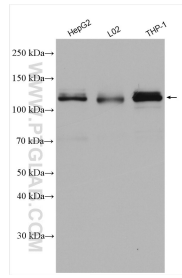
For technical support and original validation data for this product please contact:
T: 1 (888) 4PTGLAB (1-888-478-4522) (toll free in USA), or 1(312) 455-8498 (outside USA)
E: proteintech@ptglab.com
W: ptglab.com

This product is exclusively available under Proteintech Group brand and is not available to purchase from any other manufacturer.

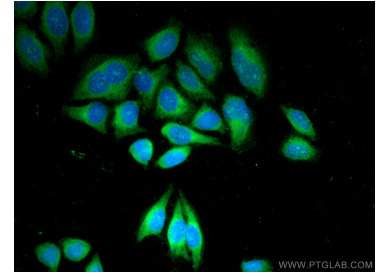
Selected Validation Data



Immunohistochemical analysis of paraffin-embedded human stomach cancer tissue slide using 13861-1-AP (CCPG1 antibody) at dilution of 1:200 (under 10x lens). Heat mediated antigen retrieval with Tris-EDTA buffer (pH 9.0).



Various lysates were subjected to SDS PAGE followed by western blot with 13861-1-AP (CCPG1 antibody) at dilution of 1:800 incubated at room temperature for 1.5 hours.



Immunofluorescent analysis of (-20°C Methanol) fixed HepG2 cells using CCPG1 antibody (13861-1-AP) at dilution of 1:400 and CoraLite®488-Conjugated AffiniPure Goat Anti-Rabbit IgG(H+L).