

For Research Use Only

FLAD1 Polyclonal antibody

Catalog Number: 14118-1-AP **1 Publications**



Basic Information

Catalog Number: 14118-1-AP	GenBank Accession Number: BC011378	Purification Method: Antigen affinity purification
Size: 150ul , Concentration: 400 µg/ml by Nanodrop and 213 µg/ml by Bradford method using BSA as the standard;	GeneID (NCBI): 80308	Recommended Dilutions: WB 1:500-1:1000 IF 1:20-1:200
Source: Rabbit	Full Name: FAD1 flavin adenine dinucleotide synthetase homolog (S. cerevisiae)	
Isotype: IgG	Calculated MW: 446 aa, 49 kDa	
Immunogen Catalog Number: AG5267	Observed MW: 50 kDa, 65-70 kDa	

Applications

Tested Applications: IF, WB, ELISA	Positive Controls: WB : K-562 cells, HepG2 cells, L02 cells, rat liver tissue IF : HepG2 cells,
Cited Applications: ColP, WB	
Species Specificity: human, mouse, rat	
Cited Species: human	

Background Information

FLAD1 is a protein-coding gene for flavin adenine dinucleotide synthetase (FADS), a key enzyme in the FAD biosynthesis process which contains an N-terminal molybdopterin-binding (MPTb) domain and a C-terminal domain (FADS domain) (PMID: 32714079). Alternative splicing of the human FLAD1 gene generates different isoforms of the enzyme FAD synthase. ~60 and ~50 kDa bands correspond to the expected mitochondrial FADS1 and cytosolic FADS2 proteins, respectively (PMID: 29316637).

Notable Publications

Author	Pubmed ID	Journal	Application
Hongwei Chu	34932315	Anal Chem	WB, ColP

Storage

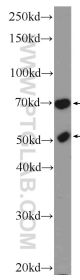
Storage:
Store at -20°C. Stable for one year after shipment.
Storage Buffer:
PBS with 0.02% sodium azide and 50% glycerol pH 7.3.
Aliquoting is unnecessary for -20°C storage

*** 20ul sizes contain 0.1% BSA

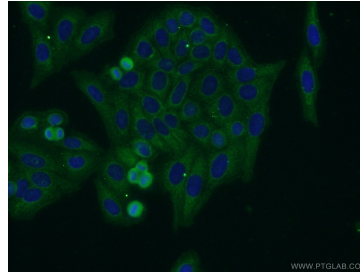
For technical support and original validation data for this product please contact:
T: 1 (888) 4PTGLAB (1-888-478-4522) (toll free in USA), or 1(312) 455-8498 (outside USA)
E: proteintech@ptglab.com
W: ptglab.com

This product is exclusively available under Proteintech Group brand and is not available to purchase from any other manufacturer.

Selected Validation Data



K-562 cells were subjected to SDS PAGE followed by western blot with 14118-1-AP (FLAD1 antibody) at dilution of 1:600 incubated at room temperature for 1.5 hours.



Immunofluorescent analysis of HepG2 cells using 14118-1-AP (FADS antibody) at dilution of 1:50 and Alexa Fluor 488-conjugated AffiniPure Goat Anti-Rabbit IgG(H+L).