

For Research Use Only

# KRAP/SSFA2 Polyclonal antibody

Catalog Number: 14157-1-AP

Featured Product

5 Publications



## Basic Information

<b>Catalog Number:</b> 14157-1-AP	<b>GenBank Accession Number:</b> BC028706	<b>Purification Method:</b> Antigen affinity purification
<b>Size:</b> 150ul, Concentration: 800 µg/ml by Nanodrop;	<b>GeneID (NCBI):</b> 6744	<b>Recommended Dilutions:</b> WB 1:500-1:1000 IP 0.5-4.0 ug for IP and 1:500-1:1000 for WB
<b>Source:</b> Rabbit	<b>Full Name:</b> sperm specific antigen 2	<b>IF 1:200-1:800</b>
<b>Isotype:</b> IgG	<b>Calculated MW:</b> 138 kDa	
<b>Immunogen Catalog Number:</b> AG5339	<b>Observed MW:</b> 180 kDa	

## Applications

<b>Tested Applications:</b> IF, IP, WB, ELISA	<b>Positive Controls:</b>
<b>Cited Applications:</b> CoIP, IF, IHC, WB	<b>WB:</b> mouse lung tissue, mouse testis tissue, rat lung tissue
<b>Species Specificity:</b> human, rat, mouse	<b>IP:</b> mouse testis tissue,
<b>Cited Species:</b> canine, human	<b>IF:</b> mouse pancreas tissue,

## Background Information

KRAP (Ki-ras-induced actin-interacting protein), also known as SSFA2, CS1 or SPAG13, is a 1,259 amino acid cytoplasmic protein associated with filamentous-actin (F-actin). KRAP is strongly expressed in pancreas and testis. It is also present in colon cancer cell lines, and the expression is up-regulated by activated K-Ras. KRAP-deficient (KO) mice display decreased adiposity and improved glucose metabolism, implicating KRAP as a potential target for the prevention or treatment of obesity and related diseases. KRAP has also been suggested to be a potential target for cancer. This antibody recognizes endogenous KRAP, which migrates with an apparent molecular mass of 180 kDa in SDS-PAGE. (PMID: 14673706; 21501587; 21873152)

## Notable Publications

Author	Pubmed ID	Journal	Application
Dingli Florent F	22946050	J Cell Sci	WB, IF
Akiko Okayama	26947549	J Proteomics	WB,IHC
Nagendra Babu Thillaiappan	34301929	Nat Commun	WB,IHC

## Storage

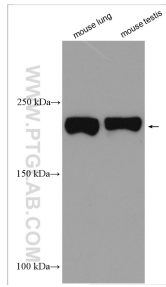
**Storage:**  
Store at -20°C. Stable for one year after shipment.  
**Storage Buffer:**  
PBS with 0.02% sodium azide and 50% glycerol pH 7.3.  
**Aliquoting is unnecessary for -20°C storage**

\*\*\* 20ul sizes contain 0.1% BSA

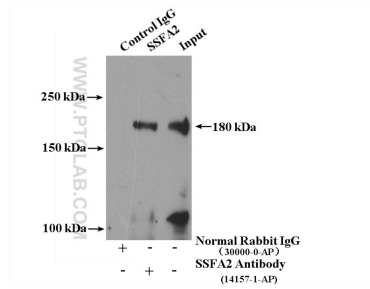
For technical support and original validation data for this product please contact:  
T: 1 (888) 4PTGLAB (1-888-478-4522) (toll free in USA), or 1(312) 455-8498 (outside USA)  
E: proteintech@ptglab.com  
W: ptglab.com

This product is exclusively available under Proteintech Group brand and is not available to purchase from any other manufacturer.

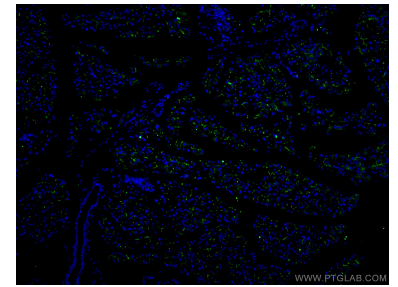
## Selected Validation Data



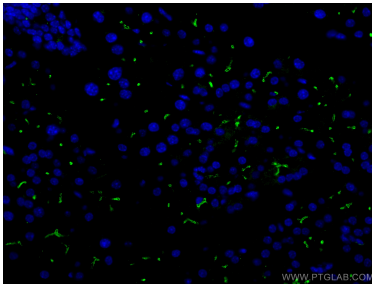
Various lysates were subjected to SDS PAGE followed by western blot with 14157-1-AP (KRAP/SSFA2 antibody) at dilution of 1:600 incubated at room temperature for 1.5 hours.



IP Result of anti-KRAP, SSFA2 (IP:14157-1-AP, 4ug; Detection:14157-1-AP 1:500) with mouse testis tissue lysate 4000ug.



Immunofluorescent analysis of (4% PFA) fixed mouse pancreas tissue using KRAP/SSFA2 antibody (14157-1-AP) at dilution of 1:400 and CoraLite@488-Conjugated AffiniPure Goat Anti-Rabbit IgG(H+L).



Immunofluorescent analysis of (4% PFA) fixed mouse pancreas tissue using KRAP/SSFA2 antibody (14157-1-AP) at dilution of 1:400 and CoraLite@488-Conjugated AffiniPure Goat Anti-Rabbit IgG(H+L).