

For Research Use Only

# PEG10 Polyclonal antibody

Catalog Number: 14412-1-AP **5 Publications**



## Basic Information

<b>Catalog Number:</b> 14412-1-AP	<b>GenBank Accession Number:</b> BC050659	<b>Purification Method:</b> Antigen affinity purification
<b>Size:</b> 150ul , Concentration: 850 µg/ml by Nanodrop;	<b>GeneID (NCBI):</b> 23089	<b>Recommended Dilutions:</b> WB 1:500-1:3000 IHC 1:500-1:2000
<b>Source:</b> Rabbit	<b>Full Name:</b> paternally expressed 10	
<b>Isotype:</b> IgG	<b>Calculated MW:</b> 80 kDa	
<b>Immunogen Catalog Number:</b> AG5754	<b>Observed MW:</b> 50 kDa, 100 kDa	

## Applications

<b>Tested Applications:</b> IF, IHC, WB, ELISA	<b>Positive Controls:</b>
<b>Cited Applications:</b> IF, IHC, WB	<b>WB :</b> HepG2 cells, L02 cells, PC-13 cells, mouse liver tissue
<b>Species Specificity:</b> human, mouse	<b>IHC :</b> mouse skin tissue,
<b>Cited Species:</b> human	

**Note-IHC: suggested antigen retrieval with TE buffer pH 9.0; (\*) Alternatively, antigen retrieval may be performed with citrate buffer pH 6.0**

## Background Information

### Notable Publications

Author	Pubmed ID	Journal	Application
Hugo Gonzalez	35063085	Cell	IHC,IF
Bin Zhang	34876700	Acta Pharmacol Sin	WB
Nar Bahadur Katuwal	38017459	J Exp Clin Cancer Res	IHC

## Storage

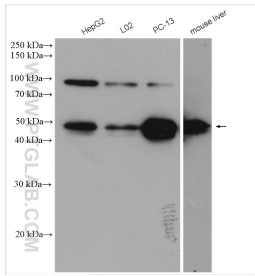
**Storage:**  
Store at -20°C. Stable for one year after shipment.  
**Storage Buffer:**  
PBS with 0.02% sodium azide and 50% glycerol pH 7.3.  
Aliquoting is unnecessary for -20°C storage

**\*\*\* 20ul sizes contain 0.1%BSA**

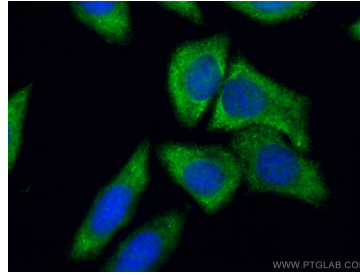
For technical support and original validation data for this product please contact:  
T: 1 (888) 4PTGLAB (1-888-478-4522) (toll free in USA), or 1(312) 455-8498 (outside USA)  
E: proteintech@ptglab.com  
W: ptglab.com

**This product is exclusively available under Proteintech Group brand and is not available to purchase from any other manufacturer.**

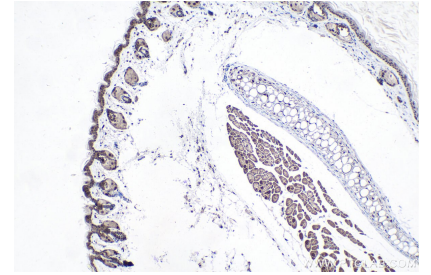
## Selected Validation Data



Various lysates were subjected to SDS PAGE followed by western blot with 14412-1-AP (PEG10 antibody) at dilution of 1:1500 incubated at room temperature for 1.5 hours.



Immunofluorescent analysis of (-20°C Ethanol) fixed HepG2 cells using PEG10 antibody (14412-1-AP) at dilution of 1:0 and CoraLite®488-Conjugated AffiniPure Goat Anti-Rabbit IgG(H+L).



Immunohistochemical analysis of paraffin-embedded mouse skin tissue slide using 14412-1-AP (PEG10 antibody) at dilution of 1:1000 (under 10x lens). Heat mediated antigen retrieval with Tris-EDTA buffer (pH 9.0).