

For Research Use Only

# TFE3 Polyclonal antibody

Catalog Number: 14480-1-AP

Featured Product

16 Publications



## Basic Information

### Catalog Number:

14480-1-AP

### Size:

150ul, Concentration: 600 µg/ml by Nanodrop;

### Source:

Rabbit

### Isotype:

IgG

### Immunogen Catalog Number:

AG5863

### GenBank Accession Number:

BC026027

### GeneID (NCBI):

7030

### UNIPROT ID:

P19532

### Full Name:

transcription factor binding to IGHM enhancer 3

### Calculated MW:

62 kDa

### Observed MW:

70 kDa

### Purification Method:

Antigen affinity purification

### Recommended Dilutions:

WB 1:500-1:2000

IP 0.5-4.0 µg for 1.0-3.0 mg of total protein lysate

IHC 1:50-1:500

## Applications

### Tested Applications:

WB, IP, IHC, ELISA

### Cited Applications:

WB, IP, IF, ChIP

### Species Specificity:

human, mouse, rat

### Cited Species:

human, rat, mouse

**Note-IHC: suggested antigen retrieval with TE buffer pH 9.0; (\*) Alternatively, antigen retrieval may be performed with citrate buffer pH 6.0**

### Positive Controls:

WB: K-562 cells, human brain tissue, mouse spleen tissue, rat brain tissue

IP: K-562 cells,

IHC: human renal cell carcinoma tissue,

## Background Information

The protein encoded by this gene is a subunit of the CRSP (cofactor required for SP1 activation) complex, which, along with TFIIID, is required for efficient activation by SP1. This protein is also a component of other multisubunit complexes e.g. thyroid hormone receptor-(TR-) associated proteins which interact with TR and facilitate TR function on DNA templates in conjunction with initiation factors and cofactors.

## Notable Publications

Author	Pubmed ID	Journal	Application
Bo Wang	33019842	Autophagy	WB,IF,IP
Sebastian Boland	36207292	Nat Commun	WB
Xiu-Lei Zhang	31103748	Biochim Biophys Acta Gen Subj	WB

## Storage

### Storage:

Store at -20°C. Stable for one year after shipment.

### Storage Buffer:

PBS with 0.02% sodium azide and 50% glycerol pH 7.3.

Aliquoting is unnecessary for -20°C storage

\*\*\* 20ul sizes contain 0.1% BSA

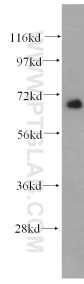
For technical support and original validation data for this product please contact:

T: 1 (888) 4PTGLAB (1-888-478-4522) (toll free in USA), or 1(312) 455-8498 (outside USA)

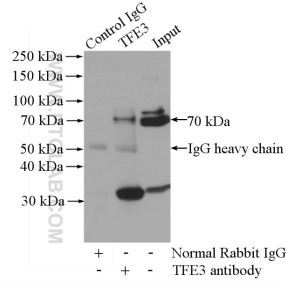
E: proteintech@ptglab.com  
W: ptglab.com

This product is exclusively available under Proteintech Group brand and is not available to purchase from any other manufacturer.

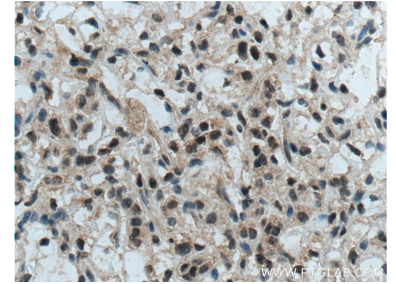
## Selected Validation Data



K-562 cells were subjected to SDS PAGE followed by western blot with 14480-1-AP (TFE3 antibody) at dilution of 1:500 incubated at room temperature for 1.5 hours.



IP result of anti-TFE3 (IP:14480-1-AP, 4 $\mu$ g; Detection:14480-1-AP 1:500) with K-562 cells lysate 1200 $\mu$ g.



Immunohistochemical analysis of paraffin-embedded human renal cell carcinoma tissue slide using 14480-1-AP (TFE3 Antibody) at dilution of 1:200 (under 40x lens). Heat mediated antigen retrieval with Tris-EDTA buffer (pH 9.0).