

For Research Use Only

TOM70 Polyclonal antibody

Catalog Number: 14528-1-AP

Featured Product

67 Publications



Basic Information

Catalog Number:

14528-1-AP

Size:

150ul, Concentration: 550 µg/ml by Nanodrop;

Source:

Rabbit

Isotype:

IgG

Immunogen Catalog Number:

AG6027

GenBank Accession Number:

BC052994

GeneID (NCBI):

9868

UNIPROT ID:

O94826

Full Name:

translocase of outer mitochondrial membrane 70 homolog A (S. cerevisiae)

Calculated MW:

67 kDa

Observed MW:

70 kDa

Purification Method:

Antigen affinity purification

Recommended Dilutions:

WB 1:1000-1:6000

IP 0.5-4.0 µg for 1.0-3.0 mg of total protein lysate

IHC 1:20-1:200

IF 1:200-1:800

Applications

Tested Applications:

FC, IF, IHC, IP, WB, ELISA

Cited Applications:

CoIP, IF, IP, WB

Species Specificity:

human, mouse, rat

Cited Species:

human, rat, mouse, monkey

Note-IHC: suggested antigen retrieval with TE buffer pH 9.0; (*) Alternatively, antigen retrieval may be performed with citrate buffer pH 6.0

Positive Controls:

WB: MCF-7 cells, HeLa cells, rat heart tissue, rat skeletal muscle tissue, mouse heart tissue, mouse brain tissue, mouse liver tissue

IP: mouse brain tissue,

IHC: human heart tissue, human kidney tissue, mouse heart tissue, human liver tissue

IF: HepG2 cells,

Background Information

TOMM70A (or TOM70) is a mitochondrial import receptor responsible for the import of cytosol synthesized precursor proteins into the mitochondria. Tom70 is a member of the tetratricopeptide repeat (TPR) co-chaperone family and contains a conserved TPR clamp domain for interaction with Hsc70 and Hsp90. Recently overexpression of TOM70 has been linked to chemoresistance to drugs in breast cancer cell lines. It is also believed that Tom70 is significantly associated with breast cancer relapse and may predict the recurrence of ovarian cancer.

Notable Publications

Author	Pubmed ID	Journal	Application
Shiyuan Huang	32936696	Am J Physiol Cell Physiol	WB
Asli D. Yildirim	36100091	J Lipid Res	WB
Milica Momcilovic	31666695	Nature	WB

Storage

Storage:

Store at -20°C. Stable for one year after shipment.

Storage Buffer:

PBS with 0.02% sodium azide and 50% glycerol pH 7.3.

Aliquoting is unnecessary for -20°C storage

*** 20ul sizes contain 0.1% BSA

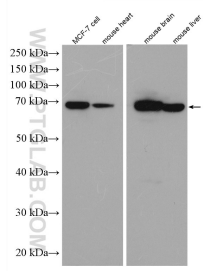
For technical support and original validation data for this product please contact:

T: 1 (888) 4PTGLAB (1-888-478-4522) (toll free in USA), or 1(312) 455-8498 (outside USA)

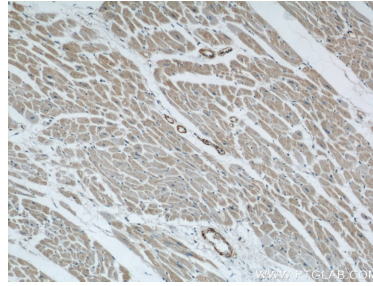
E: proteintech@ptglab.com
W: ptglab.com

This product is exclusively available under Proteintech Group brand and is not available to purchase from any other manufacturer.

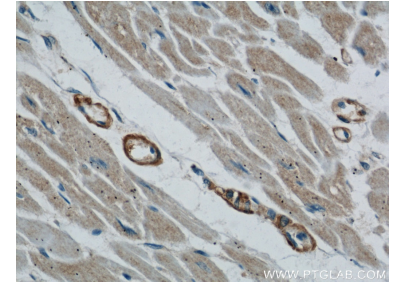
Selected Validation Data



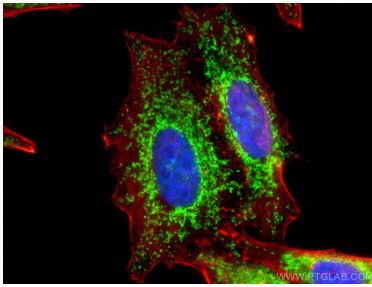
MCF-7 cells were subjected to SDS PAGE followed by western blot with 14528-1-AP (TOM70 antibody) at dilution of 1:3000 incubated at room temperature for 1.5 hours.



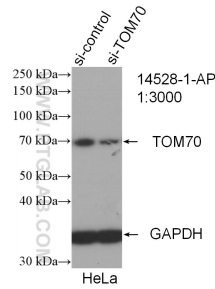
Immunohistochemical analysis of paraffin-embedded human heart using 14528-1-AP (TOM70 antibody) at dilution of 1:50 (under 10x lens).



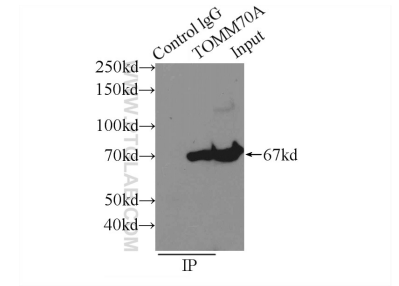
Immunohistochemical analysis of paraffin-embedded human heart using 14528-1-AP (TOM70 antibody) at dilution of 1:50 (under 40x lens).



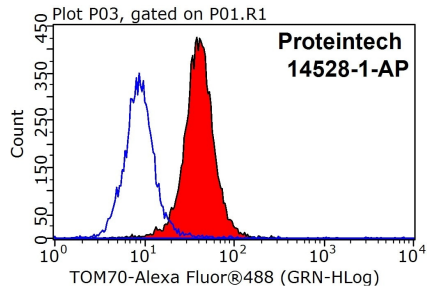
Immunofluorescent analysis of (4% PFA) fixed HepG2 cells using TOM70 antibody (14528-1-AP) at dilution of 1:400 and CoralLite@488-Conjugated AffiniPure Goat Anti-Rabbit IgG(H+L), CL594-Phalloidin (red).



WB result of TOM70 antibody (14528-1-AP; 1:3000; incubated at room temperature for 1.5 hours) with sh-Control and sh-TOM70 transfected HeLa cells.



IP result of anti-TOM70 (IP:14528-1-AP, 3ug; Detection:14528-1-AP 1:500) with mouse brain tissue lysate 6000ug.



1X10⁶ HeLa cells were stained with .2ug TOM70 antibody (14528-1-AP, red) and control antibody (blue). Fixed with 90% MeOH blocked with 3% BSA (30 min). FITC-Goat anti-Rabbit IgG with dilution 1:100.