

For Research Use Only

# METTL3 Polyclonal antibody

Catalog Number: 15073-1-AP

Featured Product

354 Publications



## Basic Information

### Catalog Number:

15073-1-AP

### Size:

150ul, Concentration: 600 µg/ml by Nanodrop;

### Source:

Rabbit

### Isotype:

IgG

### Immunogen Catalog Number:

AG7110

### GenBank Accession Number:

BC001650

### GeneID (NCBI):

56339

### UNIPROT ID:

Q86U44

### Full Name:

methyltransferase like 3

### Calculated MW:

64 kDa

### Observed MW:

65-70 kDa

### Purification Method:

Antigen affinity purification

### Recommended Dilutions:

WB 1:500-1:2000

IP 0.5-4.0 ug for 1.0-3.0 mg of total protein lysate

IHC 1:750-1:3000

## Applications

### Tested Applications:

WB, IP, IHC, ELISA

### Cited Applications:

WB, IP, IF, FC, RIP, IHC, CoIP, CHIP

### Species Specificity:

Human, Mouse, Monkey, Rat

### Cited Species:

human, goat, chicken, rat, mouse, monkey, zebrafish, pig, drosophila

**Note-IHC: suggested antigen retrieval with TE buffer pH 9.0; (\*) Alternatively, antigen retrieval may be performed with citrate buffer pH 6.0**

### Positive Controls:

**WB** : HEK-293 cells, HT-1080 cells, HeLa cells, mouse testis tissue, Jurkat cells, NCCIT cells, Neuro-2a cells, HepG2 cells, COS-7 cells, rat testis tissue, A549 cells

**IP** : HEK-293 cells,

**IHC** : human renal cell carcinoma tissue, human lung cancer tissue

## Background Information

METTL3 is a key S-adenosyl-L-methionine-binding subunit, which is a component of a complex multicomponent enzyme that catalyzes the methylation of internal adenosine residues in eukaryotic mRNA, forming N6-methyladenosine. It contains 2 putative nuclear localization signals and 2 consensus methylation motifs. The calculated molecular weight of METTL3 is 64 kDa, but modified METTL3 is about 65-70 kDa.

## Notable Publications

Author	Pubmed ID	Journal	Application
Zhang Zhang	34594034	Nat Methods	WB
Fanpeng Zhao	34593014	Mol Neurodegener	WB,IHC
Brandon J Gheller	33083017	Cell Death Discov	WB

## Storage

### Storage:

Store at -20°C. Stable for one year after shipment.

### Storage Buffer:

PBS with 0.02% sodium azide and 50% glycerol pH 7.3.

Aliquoting is unnecessary for -20°C storage

\*\*\* 20ul sizes contain 0.1% BSA

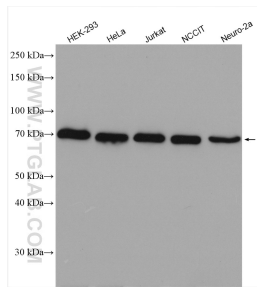
For technical support and original validation data for this product please contact:

T: 1 (888) 4PTGLAB (1-888-478-4522) (toll free in USA), or 1(312) 455-8498 (outside USA)

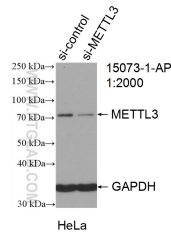
E: proteintech@ptglab.com  
W: ptglab.com

This product is exclusively available under Proteintech Group brand and is not available to purchase from any other manufacturer.

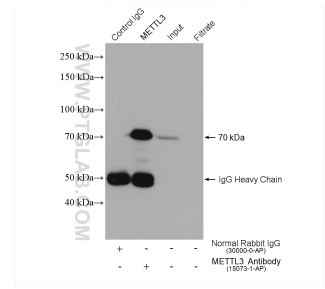
## Selected Validation Data



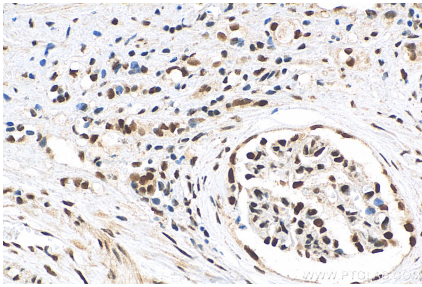
Various lysates were subjected to SDS PAGE followed by western blot with 15073-1-AP (METTL3 antibody) at dilution of 1:1000 incubated at room temperature for 1.5 hours.



WB result of METTL3 antibody (15073-1-AP; 1:2000; incubated at room temperature for 1.5 hours) with sh-Control and sh-METTL3 transfected HeLa cells.



IP result of anti-METTL3 (IP:15073-1-AP, 4ug; Detection:15073-1-AP 1:4000) with HEK-293 cells lysate 1800 ug.



Immunohistochemical analysis of paraffin-embedded human renal cell carcinoma tissue slide using 15073-1-AP (METTL3 antibody) at dilution of 1:1500 (under 40x lens). Heat mediated antigen retrieval with Tris-EDTA buffer (pH 9.0).