

For Research Use Only

SEC61B Polyclonal antibody

Catalog Number: 15087-1-AP **20 Publications**



Basic Information

Catalog Number: 15087-1-AP	GenBank Accession Number: BC001734	Purification Method: Antigen affinity purification
Size: 150ul , Concentration: 400 µg/ml by Nanodrop;	GeneID (NCBI): 10952	Recommended Dilutions: WB 1:1000-1:6000 IP 0.5-4.0 ug for 1.0-3.0 mg of total protein lysate IHC 1:50-1:500 IF 1:50-1:500
Source: Rabbit	UNIPROT ID: P60468	
Isotype: IgG	Full Name: Sec61 beta subunit	
Immunogen Catalog Number: AG7169	Calculated MW: 10 kDa	
	Observed MW: 10-15 kDa	

Applications

Tested Applications: WB, IP, IF, IHC, ELISA	Positive Controls: WB : HEK-293 cells, HeLa cells, HepG2 cells, L02 cells, mouse liver tissue, rat liver tissue IP : HepG2 cells, IHC : human liver tissue, human cervical cancer tissue IF : HepG2 cells, HeLa cells, mouse pancreas tissue
Cited Applications: WB, IP, IF, IHC	
Species Specificity: human, mouse, rat	
Cited Species: human, mouse, monkey, zebrafish	

Note-IHC: suggested antigen retrieval with TE buffer pH 9.0; (*) Alternatively, antigen retrieval may be performed with citrate buffer pH 6.0

Background Information

The heteromeric SEC61 complex is composed of alpha, beta and gamma subunits. Oligomers of the SEC61 complex form a transmembrane channel where proteins are translocated across and integrated into the ER membrane (PMID: 10212142). SEC61B is the beta subunit of the SEC61 complex. It has been reported that SEC61B facilitates cotranslational protein transport and interacts with the signal peptidase during translocation (PMID: 9585408).

Notable Publications

Author	Pubmed ID	Journal	Application
Hideaki Morishita	31526472	Elife	IF
Suman Rimal	34663454	Acta Neuropathol Commun	WB,IP
Stefan Norlin	26438609	Diabetes	WB, IHC

Storage

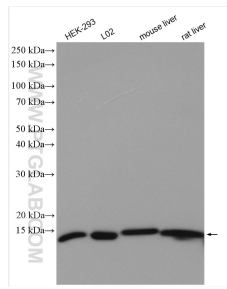
Storage:
Store at -20°C. Stable for one year after shipment.
Storage Buffer:
PBS with 0.02% sodium azide and 50% glycerol pH 7.3.
Aliquoting is unnecessary for -20°C storage

*** 20ul sizes contain 0.1% BSA

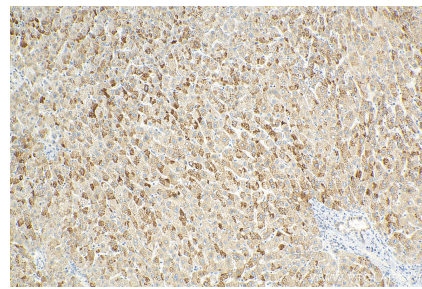
For technical support and original validation data for this product please contact:
T: 1 (888) 4PTGLAB (1-888-478-4522) (toll free in USA), or 1(312) 455-8498 (outside USA)
E: proteintech@ptglab.com
W: ptglab.com

This product is exclusively available under Proteintech Group brand and is not available to purchase from any other manufacturer.

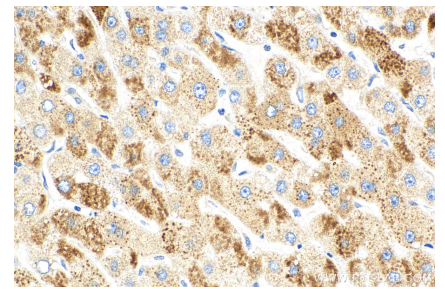
Selected Validation Data



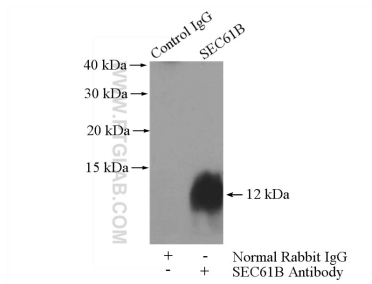
Various lysates were subjected to SDS PAGE followed by western blot with 15087-1-AP (SEC61B antibody) at dilution of 1:3000 incubated at room temperature for 1.5 hours.



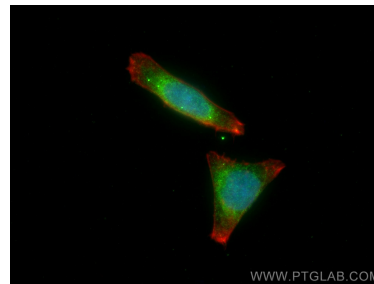
Immunohistochemical analysis of paraffin-embedded human liver tissue slide using 15087-1-AP (SEC61B antibody) at dilution of 1:200 (under 10x lens). Heat mediated antigen retrieval with Tris-EDTA buffer (pH 9.0).



Immunohistochemical analysis of paraffin-embedded human liver tissue slide using 15087-1-AP (SEC61B antibody) at dilution of 1:200 (under 40x lens). Heat mediated antigen retrieval with Tris-EDTA buffer (pH 9.0).



IP result of anti-SEC61B (IP:15087-1-AP, 4ug; Detection:15087-1-AP 1:500) with HepG2 cells lysate 1800ug.



Immunofluorescent analysis of (4% PFA) fixed HepG2 cells using SEC61B antibody (15087-1-AP) at dilution of 1:200 and CoraLite@488-Conjugated AffiniPure Goat Anti-Rabbit IgG(H+L), CL594-Phalloidin (red).