

For Research Use Only

# RPL36 Polyclonal antibody

Catalog Number: 15145-1-AP **2 Publications**



## Basic Information

<b>Catalog Number:</b> 15145-1-AP	<b>GenBank Accession Number:</b> BC003052	<b>Purification Method:</b> Antigen affinity purification
<b>Size:</b> 150ul , Concentration: 450 µg/ml by Nanodrop and 300 µg/ml by Bradford method using BSA as the standard;	<b>GeneID (NCBI):</b> 25873	<b>Recommended Dilutions:</b> WB 1:500-1:1000
<b>Source:</b> Rabbit	<b>Full Name:</b> ribosomal protein L36	
<b>Isotype:</b> IgG	<b>Calculated MW:</b> 12 kDa	
<b>Immunogen Catalog Number:</b> AG7437	<b>Observed MW:</b> 12-14 kDa	

## Applications

<b>Tested Applications:</b> WB,ELISA	<b>Positive Controls:</b> WB : PC-12 cells, BxPC-3 cells, HeLa cells, HepG2 cells, NIH/3T3 cells
<b>Cited Applications:</b> WB	
<b>Species Specificity:</b> human, mouse, rat	
<b>Cited Species:</b> human, mouse	

## Background Information

RPL36, also named as 60S ribosomal protein L36, is a 105 amino acid protein, which is a component of the large ribosomal subunit. RPL36 may be involved in the early stage of hepatocarcinogenesis, and it can be used as an independent and potential prognostic marker for resected HCC.

## Notable Publications

Author	Pubmed ID	Journal	Application
Xueju Wei	35927451	Nat Cell Biol	WB
Jingming Ren	37391878	J Pineal Res	WB

## Storage

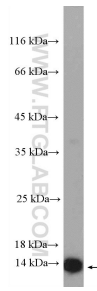
**Storage:**  
Store at -20°C. Stable for one year after shipment.  
**Storage Buffer:**  
PBS with 0.02% sodium azide and 50% glycerol pH 7.3.  
Aliquoting is unnecessary for -20°C storage

\*\*\* 20ul sizes contain 0.1% BSA

For technical support and original validation data for this product please contact:  
T: 1 (888) 4PTGLAB (1-888-478-4522) (toll free in USA), or 1(312) 455-8498 (outside USA)  
E: proteintech@ptglab.com  
W: ptglab.com

This product is exclusively available under Proteintech Group brand and is not available to purchase from any other manufacturer.

## Selected Validation Data



PC-12 cells were subjected to SDS PAGE followed by western blot with 15145-1-AP (RPL36 Antibody) at dilution of 1:600 incubated at room temperature for 1.5 hours.